

Cat. No. MHC-HM415B

Description

Source	Recombinant Biotinylated Human HLA-A*02:01&B2M&P53 R175H (HMTEVVRHC) Monomer Protein is expressed from HEK293 with His tag and Avi tag at the C-Terminus. It contains Gly25-Thr305 (HLA-A*02:01), Ile21-Met119 (B2M) and HMTEVVRHC peptide.
Accession	A0A140T913(HLA-A*02:01)&P61769(B2M)&HMTEVVRHC
Molecular Weight	The protein has a predicted MW of 50.5 kDa. Due to glycosylation, the protein migrates to 55-60 kDa based on Tris-Bis PAGE result.
Endotoxin	Less than 1EU per µg by the LAL method.
Purity	> 95% as determined by Tris-Bis PAGE > 95% as determined by HPLC

Formulation and Storage

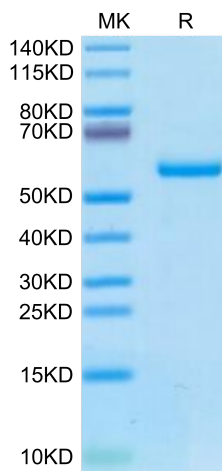
Formulation	Lyophilized from 0.22 µm filtered solution in 20mM PB, 500mM NaCl (pH 8.0). Normally 8% trehalose / 8% mannitol is added as protectant before lyophilization.
Reconstitution	Centrifuge the tube before opening. Reconstituting to a concentration more than 100 µg/ml is recommended. Dissolve the lyophilized protein in distilled water.
Storage	-20 to -80°C for 12 months as supplied from date of receipt. -80°C for 3-6 months after reconstitution. 2-8°C for 2-7 days after reconstitution. Recommend to aliquot the protein into smaller quantities for optimal storage. Please minimize freeze-thaw cycles.

Background

p53 is a tumor suppressor protein. Under stressful conditions, p53 tightly regulates cell growth by promoting apoptosis and DNA repair. When p53 becomes mutated, it loses its function, resulting in abnormal cell proliferation and tumor progression. Depending on the p53 mutation, it has been shown to form aggregates leading to negative gain of function of the protein. p53 mutant associated aggregation has been observed in several cancer tissues and has been shown to promote tumor growth.

Assay Data

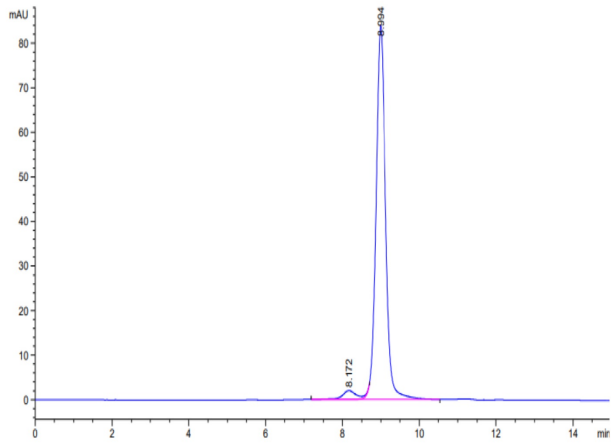
Tris-Bis PAGE



Biotinylated Human HLA-A*02:01&B2M&P53 R175H (HMTEVVRHC) Monomer on Tris-Bis PAGE under reduced condition. The purity is greater than 95%.

SEC-HPLC

Assay Data



The purity of Biotinylated Human HLA-A*02:01&B2M&P53 R175H (HMTEVVRHC) Monomer was greater than 95% as determined by SEC-HPLC.

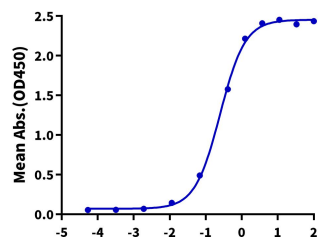
Cat. No. MHC-HM415B

Assay Data

ELISA Data

Biotinylated Human HLA-A*02:01&B2M&P53 R175H (HMTEVVRHC), His Tag ELISA

0.5µg Anti-HLA-A*02:01&B2M&P53 R175H (HMTEVVRHC) Antibody, hFc Tag Per Well



Immobilized Anti-HLA-A*02:01&B2M&P53 R175H (HMTEVVRHC) Antibody, hFc Tag at 5µg/ml (100µl/well) on the plate. Dose response curve for Biotinylated Human HLA-A*02:01&B2M&P53 R175H (HMTEVVRHC) Monomer, His Tag with the EC50 of 0.25µg/ml determined by ELISA.

Log Biotinylated Human HLA-A*02:01&B2M&P53 R175H (HMTEVVRHC), His Tag Conc.(µg/ml)