

Cat. No. MHC-HM41C

Description

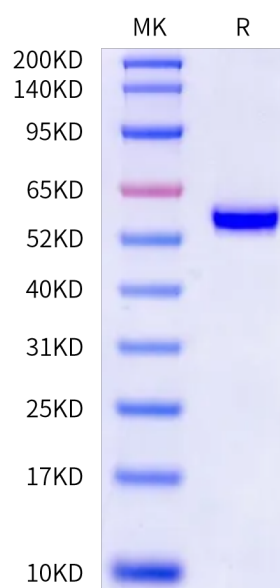
Source	Recombinant Chimeric HLA-A*02:01 ($\alpha 3$) &mB2M&P53 R175H (HMTEVVRHC) Monomer Protein is expressed from HEK293 with His tag and Avi tag at the C-terminus.
	It contains Gly25-Thr206 (Human HLA-A*02:01 $\alpha 1$ & $\alpha 2$), Asp207-Glu299 (Mouse H-2Ld $\alpha 3$), Ile21-Met119 (mB2M) and HMTEVVRHC peptide.
Accession	A0A140T913(Human HLA-A*02:01 $\alpha 1$ & $\alpha 2$)&P01897(Mouse H-2Ld $\alpha 3$)&P01887(Mouse B2M)&HMTEVVRHC
Molecular Weight	The protein has a predicted MW of 48.04 kDa. Due to glycosylation, the protein migrates to 55-63 kDa based on Bis-Tris PAGE result.
Endotoxin	Less than 0.1 EU per μ g by the LAL method.
Purity	> 95% as determined by Bis-Tris PAGE > 90% as determined by HPLC

Formulation and Storage

Formulation	Supplied as 0.22 μ m filtered solution in PBS (pH 7.4).
Storage	Valid for 12 months from date of receipt when stored at -80°C. Recommend to aliquot the protein into smaller quantities for optimal storage. Please minimize freeze-thaw cycles.

Background

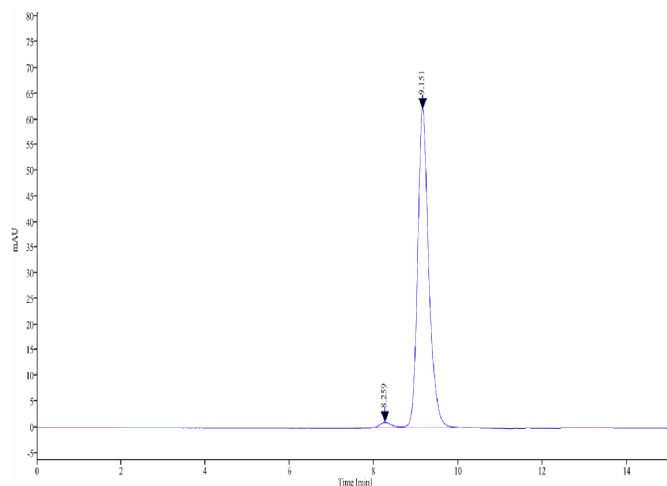
p53 is a tumor suppressor protein. Under stressful conditions, p53 tightly regulates cell growth by promoting apoptosis and DNA repair. When p53 becomes mutated, it loses its function, resulting in abnormal cell proliferation and tumor progression. Depending on the p53 mutation, it has been shown to form aggregates leading to negative gain of function of the protein. p53 mutant associated aggregation has been observed in several cancer tissues and has been shown to promote tumor growth.

Assay Data**Bis-Tris PAGE**

Chimeric HLA-A*02:01 ($\alpha 3$) &mB2M&P53 R175H (HMTEVVRHC) Monomer on Bis-Tris PAGE under reduced condition. The purity is greater than 95%.

SEC-HPLC

Assay Data

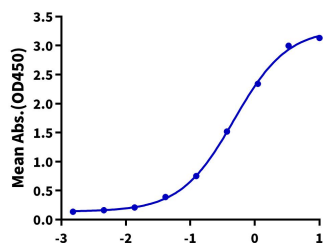


The purity of Chimeric HLA-A*02:01 ($\alpha 3$) & mB2M&P53 R175H (HMTEVVRHC) Monomer is greater than 90% as determined by SEC-HPLC.

ELISA Data

Chimeric HLA-A*02:01 ($\alpha 3$) & mB2M&P53 R175H (HMTEVVRHC), His Tag ELISA

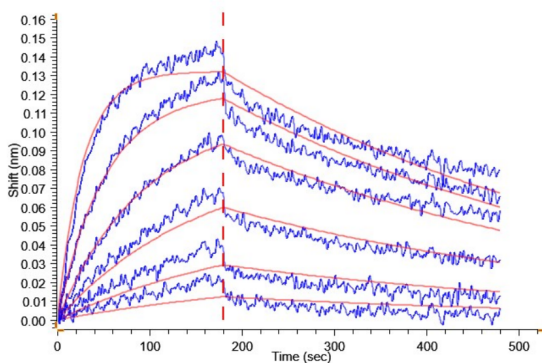
0.2 μ g Anti-HLA-A*02:01&B2M&P53 R175H (HMTEVVRHC) Antibody, hFc Tag Per Well



Log Chimeric HLA-A*02:01 ($\alpha 3$) & mB2M&P53 R175H (HMTEVVRHC), His Tag Conc. (μ g/ml)

Immobilized Anti-HLA-A*02:01&B2M&P53 R175H (HMTEVVRHC) Antibody, hFc Tag, hFc Tag at 2 μ g/ml (100 μ l/well) on the plate. Dose response curve for Chimeric HLA-A*02:01 ($\alpha 3$) & mB2M&P53 R175H (HMTEVVRHC) Monomer, His Tag with the EC50 of 0.47 μ g/ml determined by ELISA.

BLI Data



Loaded Chimeric HLA-A*02:01 ($\alpha 3$) & mB2M&P53 R175H (HLA-A*02:01), His Tag on Anti-His-Biosensor can bind Anti-HLA-A*02:01&B2M&P53 R175H (HMTEVVRHC) Antibody, hFc Tag with an affinity constant of 3.32 nM as determined in BLI assay.