

Biotinylated Human HLA-A*11:01&B2M&KRAS G12V (VVVGAVGVGK) Monomer Protein, Ultra Low Endotoxin



Cat. No. MHC-HM421B-UL

Description

Source	Recombinant Biotinylated Human HLA-A*11:01&B2M&KRAS G12V (VVVGAVGVGK) Monomer Protein is expressed from HEK293 with His tag and Avi tag at the C-Terminus. It contains Gly25-Thr305(HLA-A*11:01), Ile21-Met119(B2M) and VVVGAVGVGK peptide.
Accession	AAV53343.1(HLA-A*11:01)&P61769(B2M)&VVVGAVGVGK
Molecular Weight	The protein has a predicted MW of 50.3 kDa. Due to glycosylation, the protein migrates to 51-60 kDa based on Bis-Tris PAGE result.
Endotoxin	Less than 0.01 EU per µg by the LAL method.
Purity	> 95% as determined by Bis-Tris PAGE > 95% as determined by HPLC

Formulation and Storage

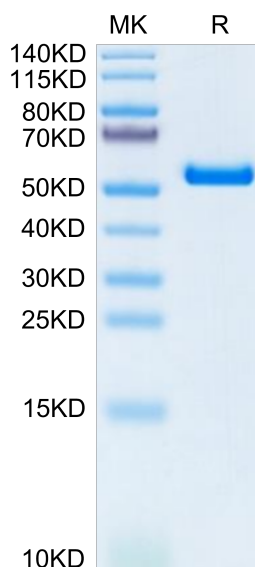
Formulation	Lyophilized from 0.22 µm filtered solution in PBS (pH 7.4). Normally 8% trehalose is added as protectant before lyophilization.
Reconstitution	Dissolve the lyophilized protein in distilled water. Please refer to the Certificate of Analysis for detailed instructions.
Storage	-20 to -80°C for 12 months as supplied from date of receipt. -80°C for 3 months after reconstitution. Recommend to aliquot the protein into smaller quantities for optimal storage. Please minimize freeze-thaw cycles.

Background

Kirsten rat sarcoma 2 viral oncogene homolog (KRAS) is the most commonly mutated oncogene in human cancer. The developments of many cancers depend on sustained expression and signaling of KRAS, which makes KRAS a high-priority therapeutic target. The virtual screening approach to discover novel KRAS inhibitors and synthetic lethality interactors of KRAS are discussed in detail.

Assay Data

Bis-Tris PAGE



Biotinylated Human HLA-A*11:01&B2M&KRAS G12V (VVVGAVGVGK) Monomer on Bis-Tris PAGE under reduced condition. The purity is greater than 95%.

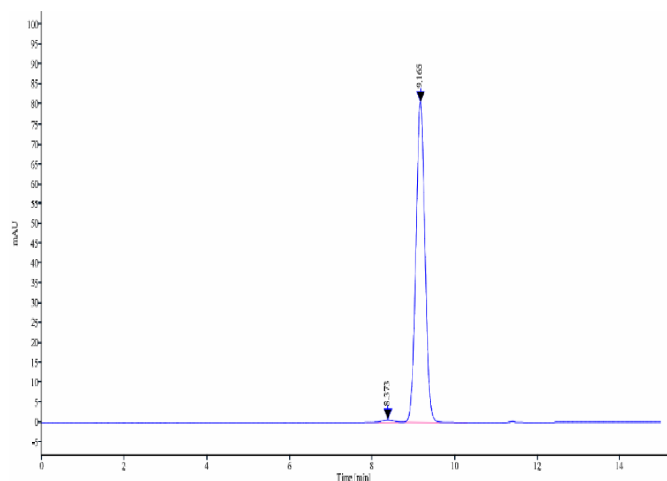
SEC-HPLC

**Biotinylated Human HLA-A*11:01&B2M&KRAS G12V (VVVGAVGVGK) Monomer Protein,
Ultra Low Endotoxin**



Cat. No. MHC-HM421B-UL

Assay Data

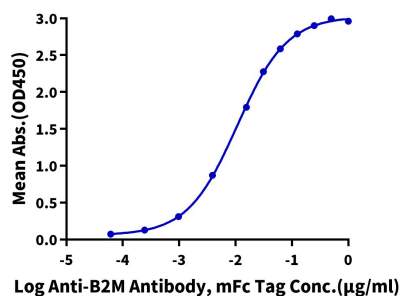


The purity of Biotinylated Human HLA-A*11:01&B2M&KRAS G12V (VVVGAVGVGK) Monomer is greater than 95% as determined by SEC-HPLC.

ELISA Data

Biotinylated Human HLA-A*11:01&B2M&KRAS G12V (VVVGAVGVGK), His Tag ELISA

0.1µg Biotinylated Human HLA-A*11:01&B2M&KRAS G12V (VVVGAVGVGK), His Tag Per Well



Immobilized Biotinylated Human HLA-A*11:01&B2M&KRAS G12V (VVVGAVGVGK) Monomer, His Tag at 1 µg/ml (100 µl/well) on the streptavidin precoated plate (5 µg/ml). Dose response curve for Anti-B2M Antibody, mFc Tag with the EC50 of 10.7 ng/ml determined by ELISA (QC Test).