

Cat. No. MHC-HM423B

### Description

<b>Source</b>	Recombinant Biotinylated Human KRAS WT(HLA-A*03:01) Protein is expressed from HEK293 with His tag and Avi tag at the C-Terminus. It contains Gly25-Thr305(HLA-A*03:01), Ile21-Met119(B2M) and VVVGAGGVGK peptide.
<b>Accession</b>	NP_002107.3(HLA-A*03:01)&P61769(B2M)&VVVGAGGVGK
<b>Molecular Weight</b>	The protein has a predicted MW of 50.2 kDa. Due to glycosylation, the protein migrates to 52-62 kDa based on Bis-Tris PAGE result.
<b>Endotoxin</b>	Less than 1EU per µg by the LAL method.
<b>Purity</b>	> 95% as determined by Bis-Tris PAGE > 95% as determined by HPLC

### Formulation and Storage

<b>Formulation</b>	Lyophilized from 0.22µm filtered solution in PBS (pH 7.4). Normally 8% trehalose is added as protectant before lyophilization.
<b>Reconstitution</b>	Centrifuge the tube before opening. Reconstituting to a concentration more than 100 µg/ml is recommended. Dissolve the lyophilized protein in distilled water.
<b>Storage</b>	-20 to -80°C for 12 months as supplied from date of receipt. -80°C for 3 months after reconstitution. Recommend to aliquot the protein into smaller quantities for optimal storage. Please minimize freeze-thaw cycles.

### Background

Kirsten rat sarcoma 2 viral oncogene homolog (KRAS) is the most commonly mutated oncogene in human cancer. The developments of many cancers depend on sustained expression and signaling of KRAS, which makes KRAS a high-priority therapeutic target.

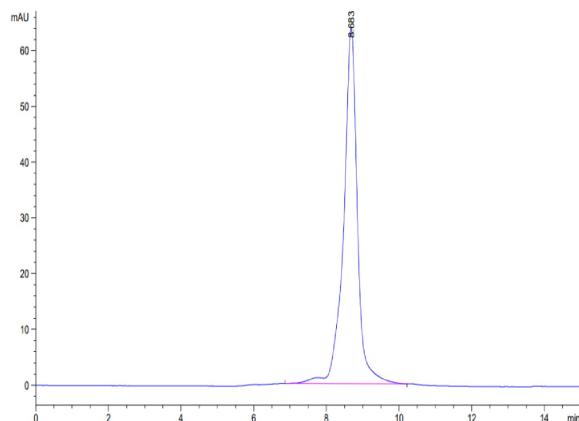
### Assay Data

#### Bis-Tris PAGE



Biotinylated Human HLA-A\*03:01&B2M&KRAS WT (VVVGAGGVGK) Monomer on Bis-Tris PAGE under reduced condition. The purity is greater than 95%.

#### SEC-HPLC



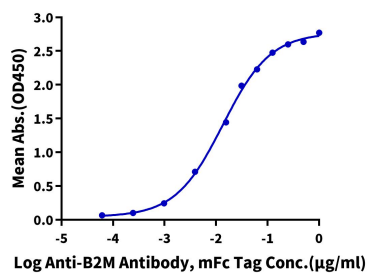
The purity of Biotinylated Human HLA-A\*03:01&B2M&KRAS WT (VVVGAGGVGK) Monomer is greater than 95% as determined by SEC-HPLC.

Assay Data

ELISA Data

Biotinylated Human HLA-A\*03:01&B2M&KRAS WT (VVVGAGGVGK) Monomer, His Tag ELISA

0.1µg Biotinylated Human HLA-A\*03:01&B2M&KRAS WT (VVVGAGGVGK) Monomer, His Tag Per Well



Immobilized Biotinylated Human HLA-A\*03:01&B2M&KRAS WT (VVVGAGGVGK) Monomer, His Tag at 1µg/ml (100µl/well) on the streptavidin precoated plate (5µg/ml). Dose response curve for Anti-B2M Antibody, mFc Tag with the EC50 of 13.6ng/ml determined by ELISA (QC Test).