

Biotinylated Human HLA-A*01:01&B2M&MAGE-A3 (EVDPIGHLY) Monomer Protein



Cat. No. MHC-HM427B

Description

Source	Recombinant Biotinylated Human HLA-A*01:01&B2M&MAGE-A3 (EVDPIGHLY) Monomer Protein is expressed from HEK293 with His tag and Avi Tag at the C-terminus. It contains Gly25-Thr305(HLA-A*01:01), Ile21-Met119(B2M) and EVDPIGHLY peptide.
Accession	Q5SUL5(HLA-A*01:01)&P61769(B2M)&EVDPIGHLY
Molecular Weight	The protein has a predicted MW of 50.30 kDa. Due to glycosylation, the protein migrates to 53-63 kDa based on Bis-Tris PAGE result.
Endotoxin	Less than 1EU per µg by the LAL method.
Purity	>95% as determined by Bis-Tris PAGE >95% as determined by HPLC

Formulation and Storage

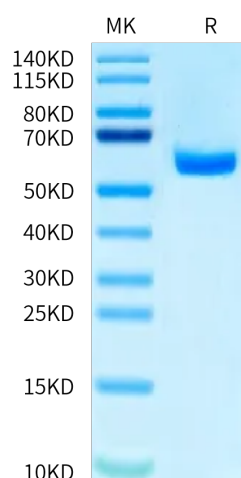
Formulation	Lyophilized from 0.22 µm filtered solution in PBS (pH 7.4). Normally 8% trehalose is added as protectant before lyophilization.
Reconstitution	Centrifuge the tube before opening. Reconstituting to a concentration more than 100 µg/ml is recommended. Dissolve the lyophilized protein in distilled water.
Storage	-20 to -80°C for 12 months as supplied from date of receipt. -80°C for 3 months after reconstitution. Recommend to aliquot the protein into smaller quantities for optimal storage. Please minimize freeze-thaw cycles.

Background

Melanoma antigen gene A3 (MAGE-A3) is one of the most immunogenic cancer testis antigens and is common in various types of cancers. MAGE-A3 can be considered as a predictor for poor prognosis and an option for vaccine immunotherapy in patients with PCa.

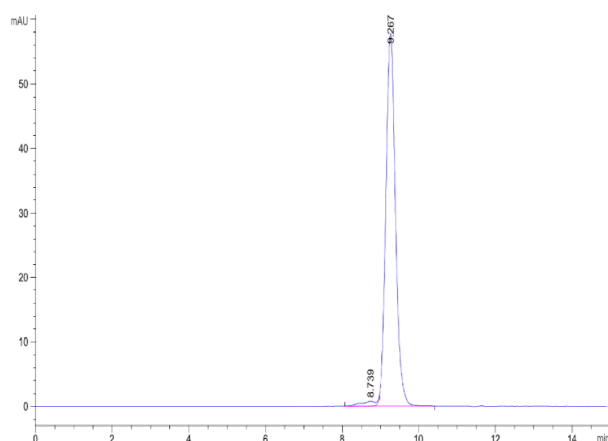
Assay Data

Bis-Tris PAGE



Biotinylated Human HLA-A*01:01&B2M&MAGE-A3 (EVDPIGHLY) Monomer on Bis-Tris PAGE under reduced condition. The purity is greater than 95%.

SEC-HPLC



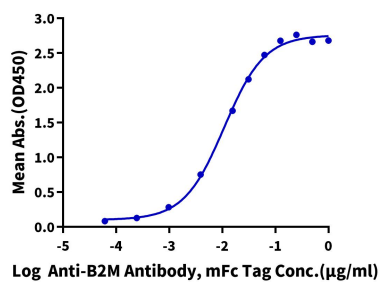
The purity of Biotinylated Human HLA-A*01:01&B2M&MAGE-A3 (EVDPIGHLY) Monomer is greater than 95% as determined by SEC-HPLC.

Assay Data

ELISA Data

Biotinylated Human HLA-A*01:01&B2M&MAGE-A3 (EVDPIGHLY) Monomer, His Tag ELISA

0.1µg Biotinylated Human HLA-A*01:01&B2M&MAGE-A3 (EVDPIGHLY) Monomer, His Tag Per Well



Immobilized Biotinylated Human HLA-A*01:01&B2M&MAGE-A3 (EVDPIGHLY) Monomer, His Tag at 1µg/ml(100µl/well) on the streptavidin precoated plate(5µg/ml). Dose response curve for Anti-B2M Antibody, mFc Tag with the EC50 of 10.9ng/ml determined by ELISA (QC Test).