

# Human Survivin 2B (HLA-A\*24:02) Tetramer Protein

Cat. No. MHC-HM430T

## Description

<b>Source</b>	Recombinant Human Survivin 2B(HLA-A*24:02) Tetramer Protein is expressed from Expi293 with His tag and Avi tag at the C-terminal,tetramer is assembled by biotinylated monomer and streptavidin. It contains Gly25-Thr305(HLA-A*24:02), Ile21-Met119(B2M) and AYACNTSTL peptide.
<b>Accession</b>	AAA59600.1(HLA-A*24:02)&P61769(B2M)&AYACNTSTL
<b>Molecular Weight</b>	The protein has a predicted MW of 258 kDa. Due to glycosylation, the protein migrates to 260-265 kDa under Non reducing (N) condition based on Tris-Bis PAGE result.
<b>Endotoxin</b>	Less than 1EU per µg by the LAL method.
<b>Purity</b>	> 95% as determined by Tris-Bis PAGE > 95% as determined by HPLC

## Formulation and Storage

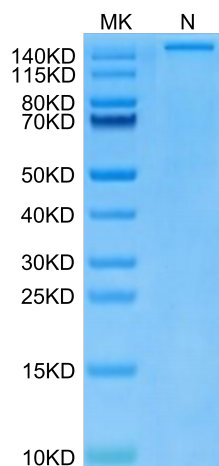
<b>Formulation</b>	Lyophilized from 0.22µm filtered solution in PBS (pH 7.4). Normally 8% trehalose is added as protectant before lyophilization.
<b>Reconstitution</b>	Centrifuge tubes before opening. Reconstituting to a concentration more than 100 µg/ml is recommended. Dissolve the lyophilized protein in distilled water.
<b>Storage</b>	-20 to -80°C for 12 months as supplied from date of receipt.-20 to -80°C for 3-6 months in unopened state after reconstitution.2-8°C for 2-7 days after reconstitution.Recommend to aliquot the protein into smaller quantities for optimal storage. Please avoid freeze-thaw cycles.

## Background

Survivin-2B, a known splice variant of survivin, has been reported to promote cell death in some cancer cells, although it keeps prosurvival function in others.survivin-2B promoted autophagy and further regulated cell death by accumulating and stabilizing IKK alpha in the nucleus.

## Assay Data

### Tris-Bis PAGE



Human Survivin 2B (HLA-A\*24:02) Tetramer on Tris-Bis PAGE under Non reducing (N) condition. The purity is greater than 95%.

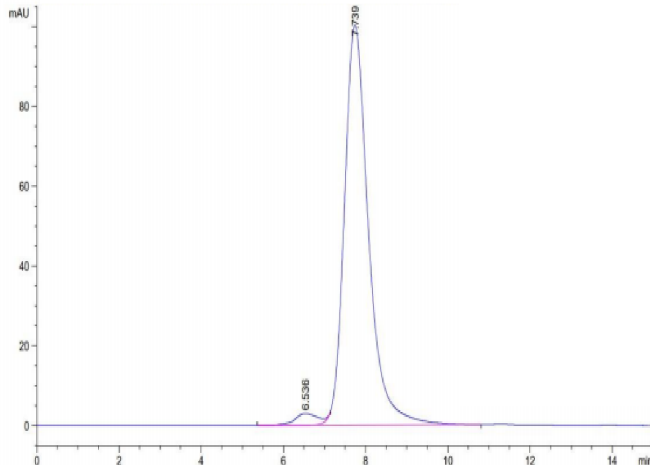
### SEC-HPLC

# Human Survivin 2B (HLA-A\*24:02) Tetramer Protein

Cat. No. MHC-HM430T



## Assay Data



The purity of Human Survivin 2B (HLA-A\*24:02) Tetramer is greater than 95% as determined by SEC-HPLC.