

Biotinylated Human HLA-A*02:01&B2M&MART-1 (ELAGIGILTV) Monomer Protein



Cat. No. MHC-HM435B

Description

Source	Recombinant Biotinylated Human HLA-A*02:01&B2M&MART-1 (ELAGIGILTV) Monomer Protein is expressed from HEK293 with His tag and Avi tag at the C-terminus. It contains Gly25-Thr305 (HLA-A*02:01), Ile21-Met119 (B2M) and ELAGIGILTV peptide.
Accession	A0A140T913(HLA-A*02:01)&P61769(B2M)&ELAGIGILTV
Molecular Weight	The protein has a predicted MW of 50.40 kDa. Due to glycosylation, the protein migrates to 53-63 kDa based on Bis-Tris PAGE result.
Endotoxin	Less than 1EU per µg by the LAL method.
Purity	>95% as determined by Tris-Bis PAGE >95% as determined by HPLC

Formulation and Storage

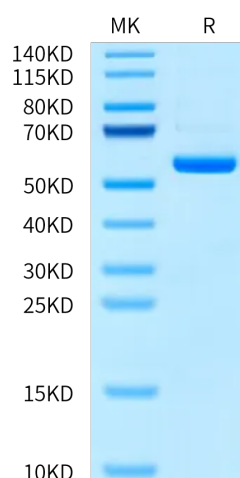
Formulation	Lyophilized from 0.22 µm filtered solution in PBS (pH 7.4). Normally 8% trehalose is added as protectant before lyophilization.
Reconstitution	Centrifuge the tube before opening. Reconstituting to a concentration more than 100 µg/ml is recommended. Dissolve the lyophilized protein in distilled water.
Storage	-20 to -80°C for 12 months as supplied from date of receipt. -80°C for 3 months after reconstitution. Recommend to aliquot the protein into smaller quantities for optimal storage. Please minimize freeze-thaw cycles.

Background

Melanoma antigen recognized by T cell-1 (Mart-1), one of the melanosome-specific proteins, also recognized by cytotoxicity T lymphocytes as a marker. Mart-1 is considered to play a critical role in the immunotherapy for melanoma.

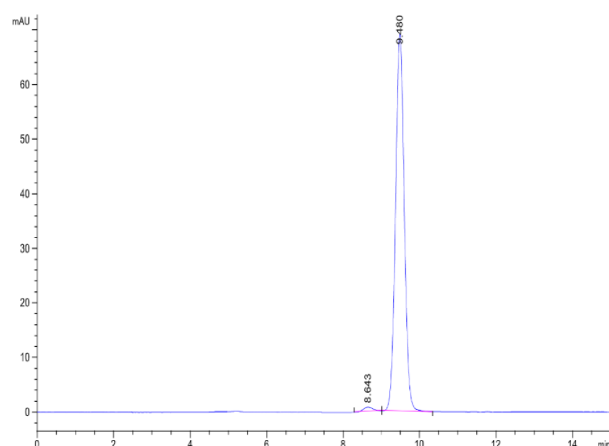
Assay Data

Bis-Tris PAGE



Biotinylated Human HLA-A*02:01&B2M&MART-1 (ELAGIGILTV) Monomer on Bis-Tris PAGE under reduced condition. The purity is greater than 95%.

SEC-HPLC



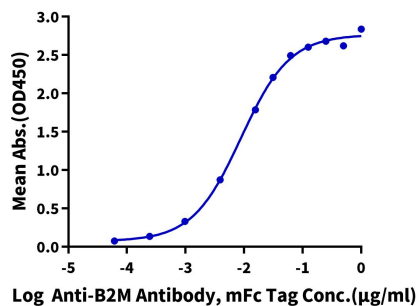
The purity of Biotinylated Human HLA-A*02:01&B2M&MART-1 (ELAGIGILTV) Monomer is greater than 95% as determined by SEC-HPLC.

Assay Data

ELISA Data

Biotinylated HLA-A*02:01&B2M&MART-1 (ELAGIGILTV) Monomer, His Tag ELISA

0.05µg Biotinylated HLA-A*02:01&B2M&MART-1 (ELAGIGILTV) Monomer, His Tag Per Well



Immobilized Biotinylated Human HLA-A*02:01&B2M&MART-1 (ELAGIGILTV) Monomer, His-Avi Tag at 0.5µg/ml(100µl/well) on the streptavidin precoated plate (5µg/ml). Dose response curve for Anti-B2M Antibody, mFc Tag with the EC50 of 8.9ng/ml determined by ELISA (QC Test).