

Human HLA-A*02:01&B2M&MAGE-A4 (KVLEHVVRV) Monomer Protein

Cat. No. MHC-HM437

Description

| | |
|-------------------------|---|
| Source | Recombinant Human HLA-A*02:01&B2M&MAGE-A4 (KVLEHVVRV) Monomer Protein is expressed from HEK293 with His tag and Avi tag at the C-Terminus. It contains Gly25-Thr305 (HLA-A*02:01), Ile21-Met119 (B2M) and KVLEHVVRV peptide. |
| Accession | A0A140T913(HLA-A*02:01)&P61769(B2M)&KVLEHVVRV |
| Molecular Weight | The protein has a predicted MW of 50.50 kDa. Due to glycosylation, the protein migrates to 52-62 kDa based on Bis-Tris PAGE result. |
| Endotoxin | Less than 1EU per µg by the LAL method. |
| Purity | > 95% as determined by Bis-Tris PAGE > 95% as determined by HPLC |

Formulation and Storage

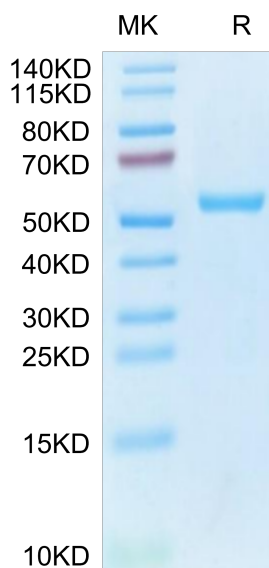
| | |
|-----------------------|---|
| Formulation | Lyophilized from 0.22µm filtered solution in PBS (pH 7.4). Normally 8% trehalose is added as protectant before lyophilization. |
| Reconstitution | Centrifuge the tube before opening. Reconstituting to a concentration more than 100 µg/ml is recommended. Dissolve the lyophilized protein in distilled water. |
| Storage | -20 to -80°C for 12 months as supplied from date of receipt. -80°C for 3 months after reconstitution. Recommend to aliquot the protein into smaller quantities for optimal storage. Please minimize freeze-thaw cycles. |

Background

MAGE-A4 and MAGE-A8 are type I members of the melanoma associated antigen (MAGE) family. The MAGE family is a large, highly conserved group of proteins that share a common MAGE homology domain. Both MAGE-A4 and MAGE-A8 antigen-presenting peptides can be presented by HLA-A*02:01.

Assay Data

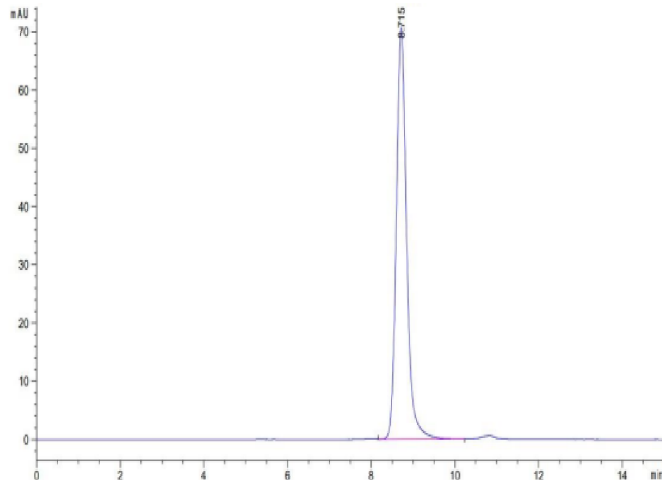
Bis-Tris PAGE



Human HLA-A*02:01&B2M&MAGE-A4 (KVLEHVVRV) Monomer on Bis-Tris PAGE under reduced condition. The purity is greater than 95%.

SEC-HPLC

Assay Data



The purity of Human HLA-A*02:01&B2M&MAGE-A4 (KVLEHVVRV) Monomer is greater than 95% as determined by SEC-HPLC.