

Cat. No. MHC-HM439T

Description

Source Recombinant Human HLA-A*11:01&B2M&KRAS G12C (VVVGACGVGK) Tetramer Protein is expressed from HEK293 with His tag and Avi tag at the C-Terminus, tetramer is assembled by biotinylated monomer and streptavidin.

It contains Gly25-Thr305(HLA-A*11:01), Ile21-Met119(B2M) and VVVGACGVGK peptide.

Accession AAV53343.1(HLA-A*11:01)&P61769(B2M)&VVVGACGVGK

Molecular Weight The protein has a predicted MW of 258 kDa. Due to glycosylation, the protein migrates to 260-265 kDa under Non reducing (N) condition based on Bis-Tris PAGE result.

Endotoxin Less than 1EU per µg by the LAL method.

Purity > 95% as determined by Bis-Tris PAGE

> 90% as determined by HPLC

Formulation and Storage

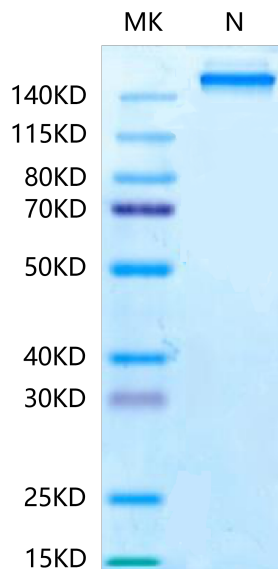
Formulation Lyophilized from 0.22 µm filtered solution in PBS (pH 7.4). Normally 8% trehalose is added as protectant before lyophilization.

Reconstitution Centrifuge the tube before opening. Reconstituting to a concentration more than 100 µg/ml is recommended. Dissolve the lyophilized protein in distilled water.

Storage -20 to -80°C for 12 months as supplied from date of receipt. -80°C for 3 months after reconstitution. Recommend to aliquot the protein into smaller quantities for optimal storage. Please minimize freeze-thaw cycles.

Background

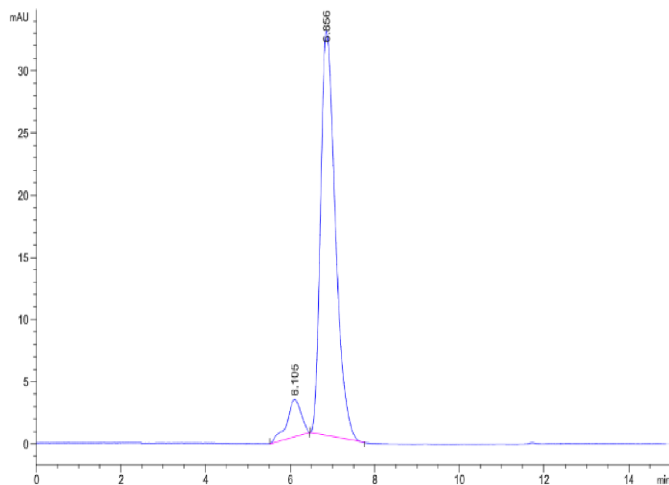
Kirsten rat sarcoma 2 viral oncogene homolog (KRAS) is the most commonly mutated oncogene in human cancer. The developments of many cancers depend on sustained expression and signaling of KRAS, which makes KRAS a high-priority therapeutic target. The virtual screening approach to discover novel KRAS inhibitors and synthetic lethality interactors of KRAS are discussed in detail.

Assay Data**Bis-Tris PAGE**

Human HLA-A*11:01&B2M&KRAS G12C (VVVGACGVGK) Tetramer Protein on Bis-Tris PAGE under Non reducing (N) condition. The purity is greater than 95%.

SEC-HPLC

Assay Data



The purity of Human HLA-A*11:01&B2M&KRAS G12C (VVVGACGVGK) Tetramer is greater than 90% as determined by SEC-HPLC.