

# Biotinylated Human HLA-A\*02:01&B2M&PRAME (SLLQHLIGL) Monomer Protein, Ultra Low Endotoxin



Cat. No. MHC-HM443B-UL

Description	
Source	Recombinant Biotinylated Human HLA-A*02:01&B2M&PRAME (SLLQHLIGL) Monomer Protein is expressed from HEK293 with His tag and Avi tag at the C-Terminus. It contains Gly25-Thr305(HLA-A*02:01), Ile21-Met119(B2M) and SLLQHLIGL peptide.
Accession	A0A140T913(HLA-A*02:01)&P61769(B2M)&SLLQHLIGL
Molecular Weight	The protein has a predicted MW of 50.40 kDa. Due to glycosylation, the protein migrates to 51-58 kDa based on Bis-Tris PAGE result.
Endotoxin	Less than 0.01 EU per µg by the LAL method.
Purity	> 95% as determined by Bis-Tris PAGE > 95% as determined by HPLC

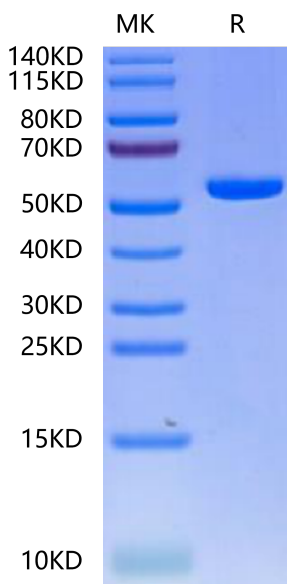
Formulation and Storage	
Formulation	Lyophilized from 0.22 µm filtered solution in PBS (pH 7.4). Normally 8% trehalose is added as protectant before lyophilization.
Reconstitution	Dissolve the lyophilized protein in distilled water. Please refer to the Certificate of Analysis for detailed instructions.
Storage	-20 to -80°C for 12 months as supplied from date of receipt. -80°C for 3 months after reconstitution. Recommend to aliquot the protein into smaller quantities for optimal storage. Please minimize freeze-thaw cycles.

**Background**

PRAME (PReferentially expressed Antigen in MElanoma) is a melanoma-associated antigen expressed in cutaneous and ocular melanomas and some other malignant neoplasms, while its expression in normal tissue and benign tumors is limited.

## Assay Data

### Bis-Tris PAGE



Biotinylated Human HLA-A\*02:01&B2M&PRAME (SLLQHLIGL) Monomer on Bis-Tris PAGE under reduced condition. The purity is greater than 95%.

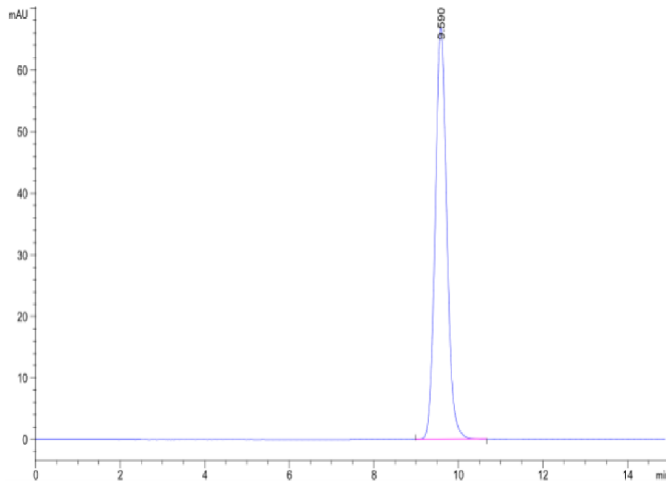
### SEC-HPLC

# Biotinylated Human HLA-A\*02:01&B2M&PRAME (SLLQHLIGL) Monomer Protein, Ultra Low Endotoxin



Cat. No. MHC-HM443B-UL

## Assay Data

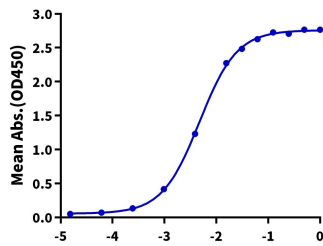


The purity of Biotinylated Human HLA-A\*02:01&B2M&PRAME (SLLQHLIGL) Monomer is greater than 95% as determined by SEC-HPLC.

## ELISA Data

### Biotinylated Human HLA-A\*02:01&B2M&PRAME (SLLQHLIGL) Monomer, His-Avi Tag ELISA

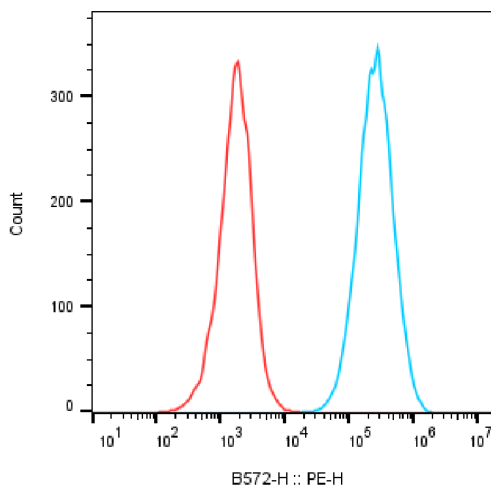
0.1µg Biotinylated Human HLA-A\*02:01&B2M&PRAME (SLLQHLIGL) Monomer, His-Avi Tag Per Well



Log HLA-A\*02:01&B2M&PRAME TCR, hFc Tag Conc.(µg/ml)

Immobilized Biotinylated Human HLA-A\*02:01&B2M&PRAME (SLLQHLIGL) Monomer, His-Avi Tag at 1µg/ml (100µl/well) on the streptavidin precoated plate (5µg/ml). Dose response curve for HLA-A\*02:01&B2M&PRAME TCR, hFc Tag with the EC50 of 4.8ng/ml determined by ELISA (QC Test).

## FACS Data



HEK293T cells + MHC-HM443B

PRAME specific TCR-HEK293T cell line + MHC-HM443B

1E6 of PRAME specific TCR-HEK293T cell line were stained with 100ul of 10ug/ml Biotinylated Human HLA-A\*02:01&B2M&PRAME (SLLQHLIGL) Monomer (Cat. No.MHC-HM443B) and non-transfected HEK293T cells and PE-Labeled protein were used as negative control. The binding activity was evaluated by PE signal.