

Biotinylated Human HLA-A*02:01&B2M&PRAME (ALYVDSLFFL) Monomer Protein



Cat. No. MHC-HM447B

Description

Source	Recombinant Biotinylated Human HLA-A*02:01&B2M&PRAME (ALYVDSLFFL) Monomer Protein is expressed from HEK293 with His tag and Avi tag at the C-Terminus. It contains Gly25-Thr305(HLA-A*02:01), Ile21-Met119(B2M) and ALYVDSLFFL peptide.
Accession	P79603(HLA-A*02:01)&P61769(B2M)&ALYVDSLFFL
Molecular Weight	The protein has a predicted MW of 50.60 kDa. Due to glycosylation, the protein migrates to 50-65 kDa based on Tris-Bis PAGE result.
Endotoxin	Less than 1EU per µg by the LAL method.
Purity	> 95% as determined by Tris-Bis PAGE > 95% as determined by HPLC

Formulation and Storage

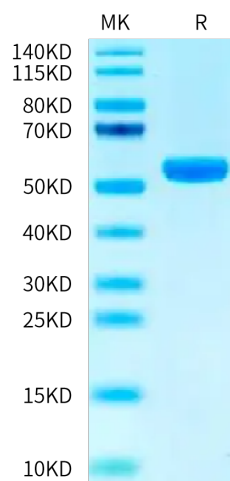
Formulation	Lyophilized from 0.22 µm filtered solution in PBS, 100mM L-arginine (pH 7.4). Normally 8% trehalose is added as protectant before lyophilization.
Reconstitution	Centrifuge the tube before opening. Reconstituting to a concentration more than 100 µg/ml is recommended. Dissolve the lyophilized protein in distilled water.
Storage	-20 to -80°C for 12 months as supplied from date of receipt. -80°C for 3-6 months after reconstitution. 2-8°C for 2-7 days after reconstitution. Recommend to aliquot the protein into smaller quantities for optimal storage. Please minimize freeze-thaw cycles.

Background

PRAME (PReferentially expressed Antigen in MELanoma) is a melanoma-associated antigen expressed in cutaneous and ocular melanomas and some other malignant neoplasms, while its expression in normal tissue and benign tumors is limited.

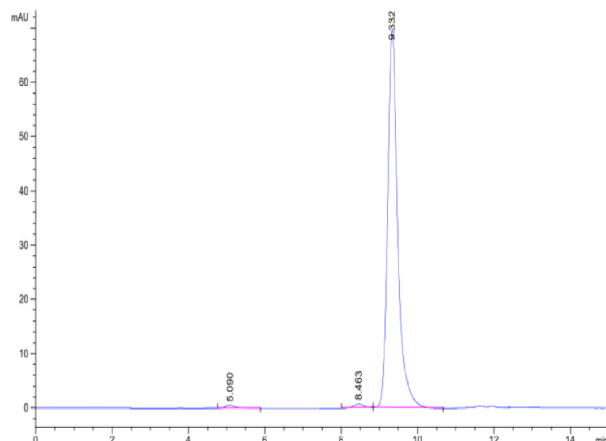
Assay Data

Tris-Bis PAGE



Biotinylated Human HLA-A*02:01&B2M&PRAME (ALYVDSLFFL) Monomer on Tris-Bis PAGE under reduced condition. The purity is greater than 95%.

SEC-HPLC



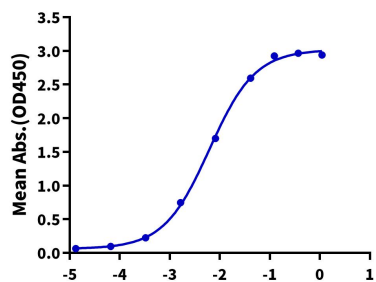
The purity of Biotinylated Human HLA-A*02:01&B2M&PRAME (ALYVDSLFFL) Monomer is greater than 95% as determined by SEC-HPLC.

Assay Data

ELISA Data

Biotinylated Human HLA-A*02:01&B2M&PRAME (ALYVDSLFFL), His Tag ELISA

0.1µg Biotinylated Human HLA-A*02:01&B2M&PRAME(ALYVDSLFFL), His Tag Per Well



Log Anti-HLA-A*02:01&B2M&PRAME Antibody, hFc Tag Conc. (µg/ml)

Immobilized Biotinylated Human HLA-A*02:01&B2M&PRAME (ALYVDSLFFL) Monomer, His Tag at 1µg/ml (100µl/well) on the streptavidin precoated plate (5µg/ml). Dose response curve for Anti-HLA-A*02:01&B2M&PRAME (ALYVDSLFFL) Antibody, hFc Tag with the EC50 of 6.2ng/ml determined by ELISA.