

Human HLA-A*02:01&B2M&PRAME (ALYVDSLFFL) Tetramer Protein

Cat. No. MHC-HM447T

Description

Source	Recombinant Human HLA-A*02:01&B2M&PRAME (ALYVDSLFFL) Tetramer Protein is expressed from HEK293 with His tag and Avi tag at the C-Terminus, tetramer is assembled by biotinylated monomer and streptavidin. It contains Gly25-Thr305 (HLA-A*02:01), Ile21-Met119 (B2M) and ALYVDSLFFL peptide.
Accession	P79603(HLA-A*02:01)&P61769(B2M)&ALYVDSLFFL
Molecular Weight	The protein has a predicted MW of 258 kDa. Due to glycosylation, the protein migrates to 260-265 kDa under Non reducing (N) condition based on Bis-Tris PAGE result.
Endotoxin	Less than 1EU per µg by the LAL method.
Purity	> 95% as determined by Bis-Tris PAGE > 95% as determined by HPLC

Formulation and Storage

Formulation	Supplied as 0.22 µm filtered solution in PBS, 100mM L-arginine (pH 7.4).
Storage	Valid for 12 months from date of receipt when stored at -80°C. Recommend to aliquot the protein into smaller quantities for optimal storage. Please minimize freeze-thaw cycles.

Background

PRAME (PReferentially expressed Antigen in MElanoma) is a melanoma-associated antigen expressed in cutaneous and ocular melanomas and some other malignant neoplasms, while its expression in normal tissue and benign tumors is limited.

Assay Data

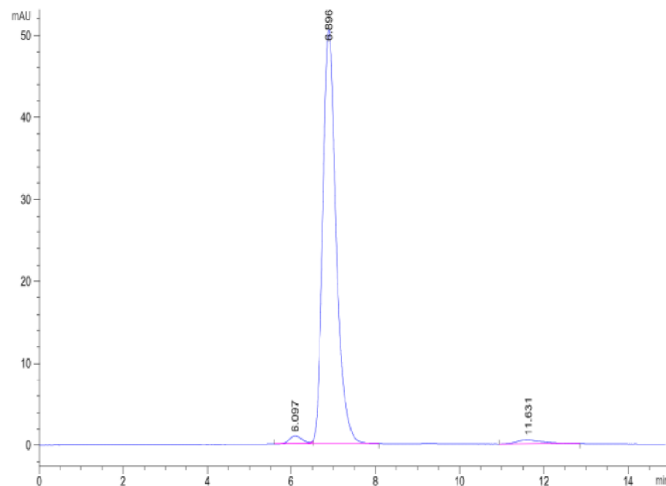
Bis-Tris PAGE



Human HLA-A*02:01&B2M&PRAME (ALYVDSLFFL) Tetramer on Bis-Tris PAGE under reduced condition. The purity is greater than 95%.

SEC-HPLC

Assay Data

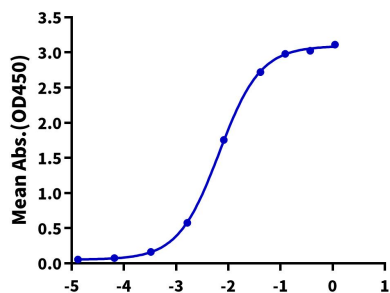


The purity of Human HLA-A*02:01&B2M&PRAME (ALYVDSLFFL) Tetramer is greater than 95% as determined by SEC-HPLC.

ELISA Data

Human HLA-A*02:01&B2M&PRAME (ALYVDSLFFL) Tetramer, His Tag ELISA

0.1µg Human HLA-A*02:01&B2M&PRAME (ALYVDSLFFL) Tetramer, His Tag Per Well



Immobilized Human HLA-A*02:01&B2M&PRAME (ALYVDSLFFL) Tetramer, His Tag at 1µg/ml (100µl/well) on the plate. Dose response curve for Anti-HLA-A*02:01&B2M&PRAME (ALYVDSLFFL) Antibody, hFc Tag with the EC50 of 6.7ng/ml determined by ELISA.