

# Human HLA-B\*15:01&B2M&SARS-CoV-2 epitope (NQKLIANQF) Monomer Protein



Cat. No. MHC-HM448

## Description

<b>Source</b>	Recombinant Human HLA-B*15:01&B2M&SARS-CoV-2 epitope (NQKLIANQF) Monomer Protein is expressed from HEK293 with His tag and Avi tag at the C-terminus. It contains Gly21-Thr301(HLA-B*15:01), Ile21-Met119(B2M) and NQKLIANQF peptide.
<b>Accession</b>	AAA53258.1(HLA-B*15:01)&P61769(B2M)&NQKLIANQF
<b>Molecular Weight</b>	The protein has a predicted MW of 50.50 kDa. Due to glycosylation, the protein migrates to 52-68 kDa based on Tris-Bis PAGE result.
<b>Endotoxin</b>	Less than 1EU per µg by the LAL method.
<b>Purity</b>	> 95% as determined by Tris-Bis PAGE > 95% as determined by HPLC

## Formulation and Storage

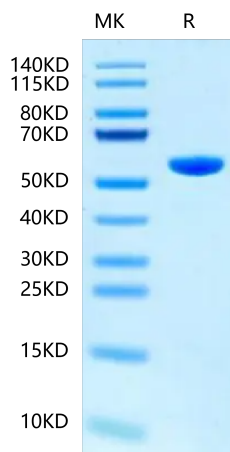
<b>Formulation</b>	Lyophilized from 0.22 µm filtered solution in PBS (pH 7.4). Normally 8% trehalose is added as protectant before lyophilization.
<b>Reconstitution</b>	Centrifuge the tube before opening. Reconstituting to a concentration more than 100 µg/ml is recommended. Dissolve the lyophilized protein in distilled water.
<b>Storage</b>	-20 to -80°C for 12 months as supplied from date of receipt. -20 to -80°C for 3-6 months in unopened state after reconstitution. 2-8°C for 2-7 days after reconstitution. Recommend to aliquot the protein into smaller quantities for optimal storage. Please minimize freeze-thaw cycles.

## Background

HLA-B\*15:01 is strongly associated with asymptomatic infection with SARS-CoV-2 and is likely to be involved in the mechanism underlying early viral clearance. T cells from pre-pandemic individuals carrying HLA-B\*15:01 were reactive to the immunodominant SARS-CoV-2 S-derived peptide NQKLIANQF, and 100% of the reactive cells displayed memory phenotype.

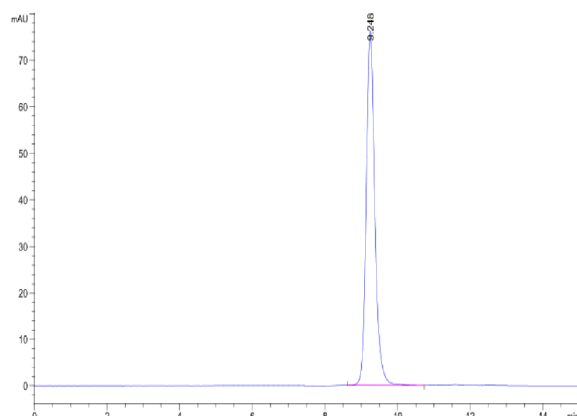
## Assay Data

### Tris-Bis PAGE



Human HLA-B\*15:01&B2M&SARS-CoV-2 epitope (NQKLIANQF) Monomer on Tris-Bis PAGE under reduced condition. The purity is greater than 95%.

### SEC-HPLC



The purity of Human HLA-B\*15:01&B2M&SARS-CoV-2 epitope (NQKLIANQF) Monomer is greater than 95% as determined by SEC-HPLC.