

Biotinylated Human HLA-A*11:01&B2M&KRAS G12D (VVVGADGVGK) Monomer Protein



Cat. No. MHC-HM454B

Description

Source	Recombinant Biotinylated Human HLA-A*11:01&B2M&KRAS G12D (VVVGADGVGK) Monomer Protein is expressed from E.coli with with His tag and Avi tag at the C-Terminus. It contains Gly25-Thr305 (HLA-A*11:01), Ile21-Met119 (B2M) and VVVGADGVGK peptide.
Accession	AAV53343.1(HLA-A*11:01)&P61769(B2M)&VVVGADGVGK
Molecular Weight	The protein has a predicted MW of 35.36 kDa (HLA-A*11:01) and 11.9 kDa (B2M) same as Tris-Bis PAGE result.
Endotoxin	Less than 1EU per µg by the LAL method.
Purity	> 95% as determined by Tris-Bis PAGE > 95% as determined by HPLC

Formulation and Storage

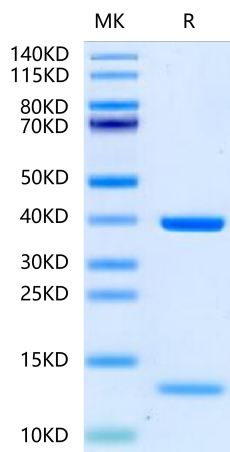
Formulation	Lyophilized from 0.22µm filtered solution in PBS (pH 7.4). Normally 8% trehalose is added as protectant before lyophilization.
Reconstitution	Centrifuge the tube before opening. Reconstituting to a concentration more than 100 µg/ml is recommended. Dissolve the lyophilized protein in distilled water.
Storage	-20 to -80°C for 12 months as supplied from date of receipt. -20 to -80°C for 3-6 months in unopened state after reconstitution. 2-8°C for 2-7 days after reconstitution. Recommend to aliquot the protein into smaller quantities for optimal storage. Please minimize freeze-thaw cycles.

Background

Kirsten rat sarcoma 2 viral oncogene homolog (KRAS) is the most commonly mutated oncogene in human cancer. The developments of many cancers depend on sustained expression and signaling of KRAS, which makes KRAS a high-priority therapeutic target. The virtual screening approach to discover novel KRAS inhibitors and synthetic lethality interactors of KRAS are discussed in detail.

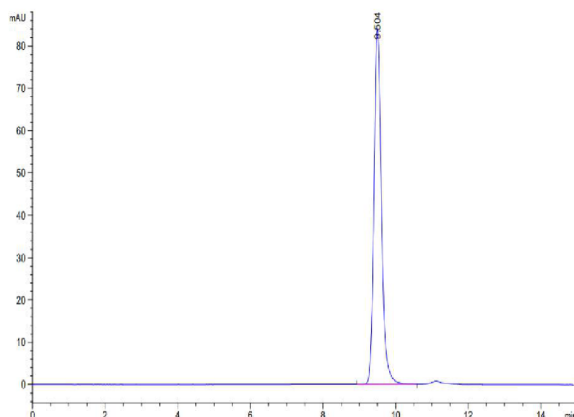
Assay Data

Tris-Bis PAGE



Biotinylated HLA-A*11:01&B2M&KRAS G12D (VVVGADGVGK) Monomer on Tris-Bis PAGE under reduced condition. The purity is greater than 95%.

SEC-HPLC



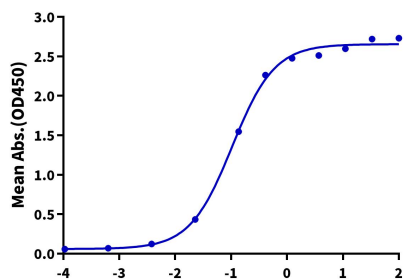
The purity of Biotinylated HLA-A*11:01&B2M&KRAS G12D (VVVGADGVGK) Monomer is greater than 95% as determined by SEC-HPLC.

Assay Data

ELISA Data

Biotinylated HLA-A*11:01&B2M&KRAS G12D (VVGADGVGK), His Tag ELISA

0.2µg HLA-A*11:01&B2M&KRAS G12D TCR Per Well



Immobilized HLA-A*11:01&B2M&KRAS G12D TCR at 2µg/ml (100µl/well) on the plate. Dose response curve for Biotinylated HLA-A*11:01&B2M&KRAS G12D (VVGADGVGK) Monomer, His Tag with the EC50 of 0.1µg/ml determined by ELISA.

Log Biotinylated HLA-A*11:01&B2M&KRAS G12D (VVGADGVGK), His Tag Conc. (µg/ml)