

Biotinylated Human HLA-A*11:01&B2M&KRAS G12D (VVGADGVGK) Monomer Protein



Cat. No. MHC-HM455B

Description

Source	Recombinant Biotinylated Human HLA-A*11:01&B2M&KRAS G12D (VVGADGVGK) Monomer Protein is expressed from E.coli with with His tag and Avi tag at the C-Terminus. It contains Gly25-Thr305(HLA-A*11:01), Ile21-Met119(B2M) and VVGADGVGK peptide.
Accession	AAV53343.1(HLA-A*11:01)&P61769(B2M)&VVGADGVGK
Molecular Weight	The protein has a predicted MW of 35.36 kDa (HLA-A*11:01) and 11.9 kDa (B2M) same as Bis-Tris PAGE result.
Endotoxin	Less than 1EU per µg by the LAL method.
Purity	>95% as determined by Bis-Tris PAGE >95% as determined by HPLC

Formulation and Storage

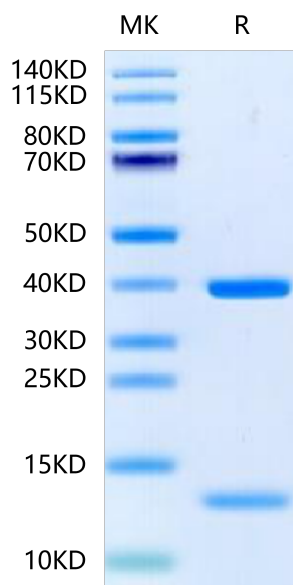
Formulation	Supplied as 0.22 µm filtered solution in PBS (pH 7.4) / 20mM Tris, 200mM NaCl (pH 8.0).
Storage	Valid for 12 months from date of receipt when stored at -80°C. Recommend to aliquot the protein into smaller quantities for optimal storage. Please minimize freeze-thaw cycles.

Background

Kirsten rat sarcoma 2 viral oncogene homolog (KRAS) is the most commonly mutated oncogene in human cancer. The developments of many cancers depend on sustained expression and signaling of KRAS, which makes KRAS a high-priority therapeutic target. The virtual screening approach to discover novel KRAS inhibitors and synthetic lethality interactors of KRAS are discussed in detail.

Assay Data

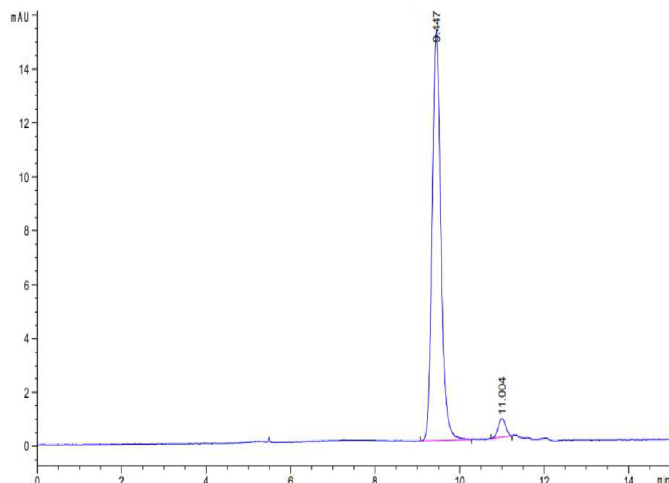
Bis-Tris PAGE



Biotinylated HLA-A*11:01&B2M&KRAS G12D (VVGADGVGK) Monomer on Bis-Tris PAGE under reduced condition. The purity is greater than 95%.

SEC-HPLC

Assay Data

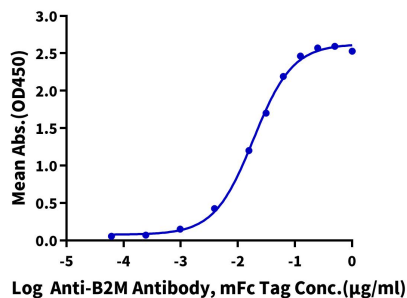


The purity of Biotinylated HLA-A*11:01&B2M&KRAS G12D (VVGADGVGK) Monomer is greater than 95% as determined by SEC-HPLC.

ELISA Data

Biotinylated Human HLA-A*11:01&B2M&KRAS G12D (VVGADGVGK), His Tag ELISA

0.1µg Biotinylated Human HLA-A*11:01&B2M&KRAS G12D (VVGADGVGK), His Tag Per Well



Immobilized Biotinylated Human HLA-A*11:01&B2M&KRAS G12D (VVGADGVGK) Monomer, His Tag at 1µg/ml(100µl/well) on the streptavidin precoated plate (5µg/ml). Dose response curve for Anti-B2M Antibody, mFc Tag with the EC50 of 18.7ng/ml determined by ELISA (QC Test).