

Cat. No. MHC-HM458B

**Description**

<b>Source</b>	Recombinant Biotinylated Human HLA-A*02:01&B2M&CMV pp65 (NLVPMVATV) Monomer Protein is expressed from HEK293 with His tag and Avi tag at the C-Terminus. It contains Gly25-Thr305(HLA-A*02:01), Ile21-Met119(B2M) and NLVPMVATV peptide.
<b>Accession</b>	A0A140T913(HLA-A*02:01)&P61769(B2M)&NLVPMVATV
<b>Molecular Weight</b>	The protein has a predicted MW of 50.35 kDa. Due to glycosylation, the protein migrates to 53-63 kDa based on Tris-Bis PAGE result.
<b>Endotoxin</b>	Less than 1EU per µg by the LAL method.
<b>Purity</b>	> 95% as determined by Tris-Bis PAGE > 95% as determined by HPLC

**Formulation and Storage**

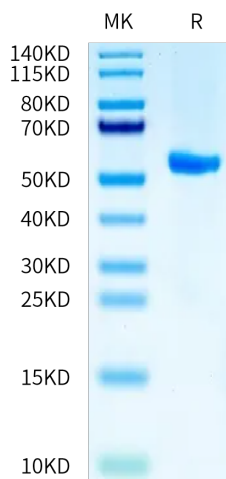
<b>Formulation</b>	Lyophilized from 0.22 µm filtered solution in PBS (pH 7.4). Normally 8% trehalose is added as protectant before lyophilization.
<b>Reconstitution</b>	Centrifuge the tube before opening. Reconstituting to a concentration more than 100 µg/ml is recommended. Dissolve the lyophilized protein in distilled water.
<b>Storage</b>	-20 to -80°C for 12 months as supplied from date of receipt. -80°C for 3-6 months after reconstitution. 2-8°C for 2-7 days after reconstitution. Recommend to aliquot the protein into smaller quantities for optimal storage. Please minimize freeze-thaw cycles.

**Background**

Human cytomegalovirus (CMV) is one of the major causes of severe complications in immunocompromised patients, such as recipients of hematopoietic cells, solid organ transplantation, and HIV-infected individuals. CMV is also a major pathogen in congenital infection. It can cause life-threatening diseases and severe neurological sequelae in newborn infants. CMV phosphoprotein pp65 is thought to be a major antigen for CMV-specific cellular immunity.

**Assay Data**

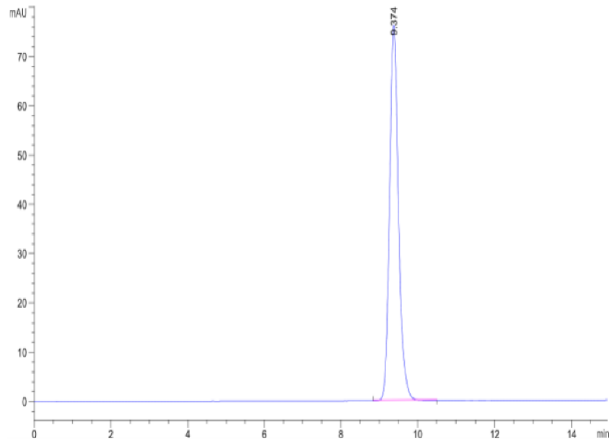
**Tris-Bis PAGE**



Biotinylated Human HLA-A\*02:01&B2M&CMV pp65 (NLVPMVATV) Monomer on Tris-Bis PAGE under reduced condition. The purity is greater than 95%.

**SEC-HPLC**

Assay Data



The purity of Biotinylated Human HLA-A\*02:01&B2M&CMV pp65 (NLVPMVATV) Monomer is greater than 95% as determined by SEC-HPLC.