

Biotinylated Human HLA-A*02:01&B2M&MAGE-A10 (GLYDGMEHL) Monomer Protein



Cat. No. MHC-HM459B

Description

| | |
|-------------------------|---|
| Source | Recombinant Biotinylated Human HLA-A*02:01&B2M&MAGE-A10 (GLYDGMEHL) Monomer Protein is expressed from HEK293 with His tag and Avi tag at the C-Terminus. It contains Gly25-Thr305(HLA-A*02:01), Ile21-Met119(B2M) and GLYDGMEHL peptide. |
| Accession | A0A140T913(HLA-A*02:01)&P61769(B2M)&GLYDGMEHL |
| Molecular Weight | The protein has a predicted MW of 50.44 kDa. Due to glycosylation, the protein migrates to 53-63 kDa based on Tris-Bis PAGE result. |
| Endotoxin | Less than 1EU per µg by the LAL method. |
| Purity | > 95% as determined by Tris-Bis PAGE > 95% as determined by HPLC |

Formulation and Storage

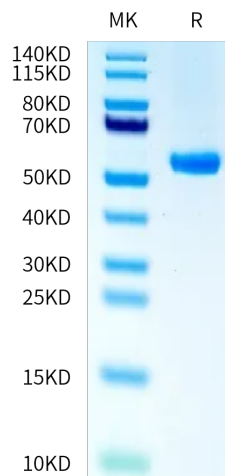
| | |
|-----------------------|--|
| Formulation | Lyophilized from 0.22 µm filtered solution in PBS (pH 7.4). Normally 8% trehalose is added as protectant before lyophilization. |
| Reconstitution | Centrifuge the tube before opening. Reconstituting to a concentration more than 100 µg/ml is recommended. Dissolve the lyophilized protein in distilled water. |
| Storage | -20 to -80°C for 12 months as supplied from date of receipt. -80°C for 3-6 months after reconstitution. 2-8°C for 2-7 days after reconstitution. Recommend to aliquot the protein into smaller quantities for optimal storage. Please minimize freeze-thaw cycles. |

Background

MAGE-A10 is a subtype of the Melanoma-associated antigen A (MAGE-A), a class of tumor antigens that are extensively expressed in various histological types of tumors and represents an attractive target for tumor immunotherapy. High-level expression of MAGE-A10 improved the anti-tumor immune cytotoxicity of MAGE-A10-specific CTLs in lung cancer cell lines and primary lung cancer cells.

Assay Data

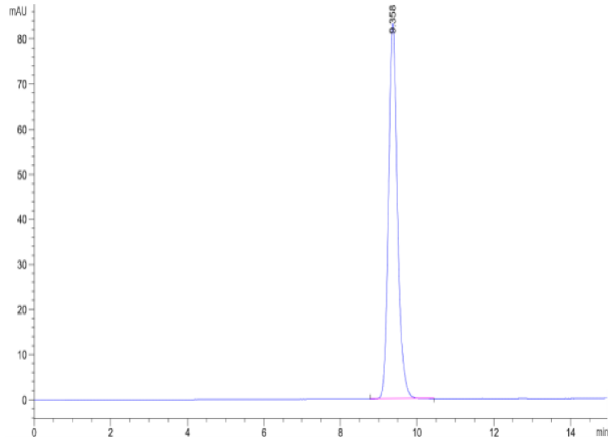
Tris-Bis PAGE



Biotinylated Human HLA-A*02:01&B2M&MAGE-A10 (GLYDGMEHL) Monomer on Tris-Bis PAGE under reduced condition. The purity is greater than 95%.

SEC-HPLC

Assay Data



The purity of Biotinylated Human HLA-A*02:01&B2M&MAGE-A10 (GLYDGMEHL) Monomer is greater than 95% as determined by SEC-HPLC.