

# Human HLA-E\*01:03&B2M&EBV LMP1 (GGDPHLPTL) Monomer Protein

Cat. No. MHC-HM466

## Description

|                         |   |
|-------------------------|---|
| <b>Source</b>           | Recombinant Human HLA-E*01:03&B2M&EBV LMP1 (GGDPHLPTL) Monomer Protein is expressed from HEK293 with His tag and Avi at the C-terminus.<br>It contains Gly22-Thr302(HLA-E*01:03), Ile21-Met119 (B2M) and GGDPHLPTL peptide. |
| <b>Accession</b>        | P13747(HLA-E*01:03)&P61769(B2M)&GGDPHLPTL   |
| <b>Molecular Weight</b> | The protein has a predicted MW of 50.15 kDa. Due to glycosylation, the protein migrates to 53-63 kDa based on Bis-Tris PAGE result.   |
| <b>Endotoxin</b>        | Less than 1EU per µg by the LAL method.   |
| <b>Purity</b>           | > 95% as determined by Bis-Tris PAGE<br>> 95% as determined by HPLC   |

## Formulation and Storage

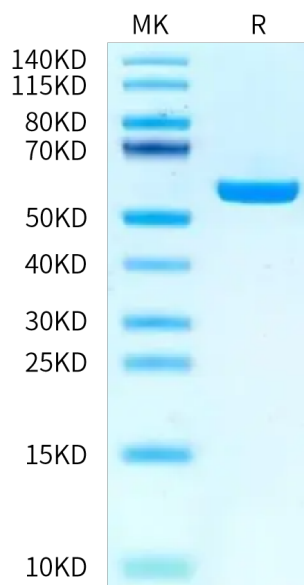
|                       |   |
|-----------------------|---|
| <b>Formulation</b>    | Lyophilized from 0.22 µm filtered solution in PBS (pH 7.4). Normally 8% trehalose is added as protectant before lyophilization.   |
| <b>Reconstitution</b> | Centrifuge the tube before opening. Reconstituting to a concentration more than 100 µg/ml is recommended. Dissolve the lyophilized protein in distilled water.  |
| <b>Storage</b>        | -20 to -80°C for 12 months as supplied from date of receipt. -80°C for 3 months after reconstitution. Recommend to aliquot the protein into smaller quantities for optimal storage. Please minimize freeze-thaw cycles. |

## Background

Epstein-Barr virus (EBV)-encoded latent membrane protein 1 (LMP1) is expressed in germinal-center-derived, mononuclear Hodgkin (H) and multinuclear, diagnostic Reed-Sternberg (RS) cells in classical EBV-positive Hodgkin's lymphoma (cHL). LMP1 expression in EBV-negative H-cell lines results in a significantly increased number of RS cells.

## Assay Data

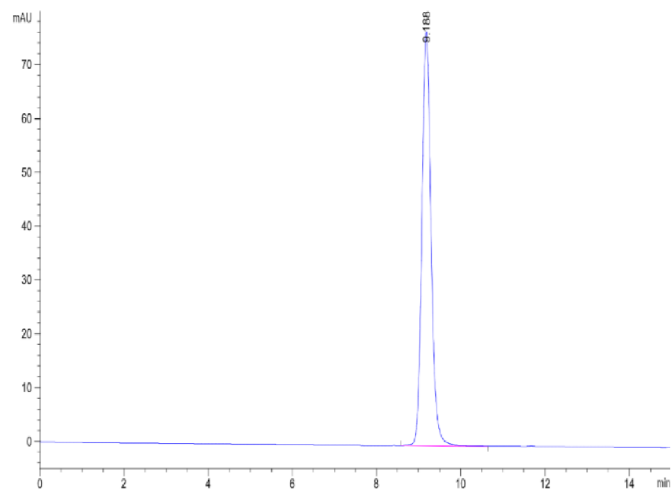
### Bis-Tris PAGE



Human HLA-E\*01:03&B2M&EBV LMP1 (GGDPHLPTL) Monomer on Bis-Tris PAGE under reduced condition. The purity is greater than 95%.

### SEC-HPLC

Assay Data



The purity of Human HLA-E\*01:03&B2M&EBV LMP1 (GGDPHLPTL) Monomer is greater than 95% as determined by SEC-HPLC.