

Biotinylated Human HLA-A*11:01&B2M&EGFR L858R (KITDFGRAK) Monomer Protein



Cat. No. MHC-HM479B

Description

Source	Recombinant Biotinylated Human HLA-A*11:01&B2M&EGFR L858R (KITDFGRAK) Monomer Protein is expressed from HEK293 with His tag and Avi tag at the C-terminus. It contains Gly25-Thr305(HLA-A*11:01), Ile21-Met119(B2M) and KITDFGRAK peptide.
Accession	AAV53343.1(HLA-A*11:01)&P61769(B2M)&KITDFGRAK
Molecular Weight	The protein has a predicted MW of 50.40 kDa. Due to glycosylation, the protein migrates to 53-63 kDa based on Bis-Tris PAGE result.
Endotoxin	Less than 1EU per µg by the LAL method.
Purity	>95% as determined by Bis-Tris PAGE >95% as determined by HPLC

Formulation and Storage

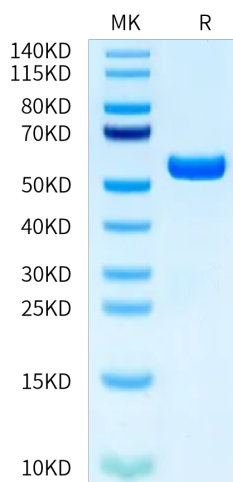
Formulation	Supplied as 0.22 µm filtered solution in PBS (pH 7.4).
Storage	Valid for 12 months from date of receipt when stored at -80°C. Recommend to aliquot the protein into smaller quantities for optimal storage. Please minimize freeze-thaw cycles.

Background

The epidermal growth factor receptor is a transmembrane protein that is a receptor for members of the epidermal growth factor family of extracellular protein ligands. The epidermal growth factor receptor is a member of the ErbB family of receptors, a subfamily of four closely related receptor tyrosine kinases: EGFR, HER2/neu, Her 3 and Her 4. Receptor tyrosine kinase binding ligands of the EGF family and activating several signaling cascades to convert extracellular cues into appropriate cellular responses.

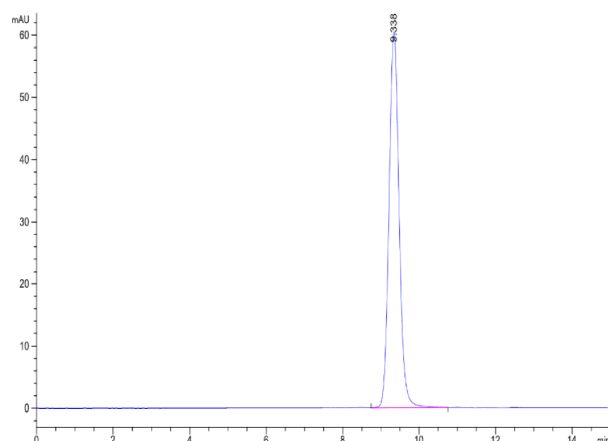
Assay Data

Bis-Tris PAGE



Biotinylated Human HLA-A*11:01&B2M&EGFR L858R (KITDFGRAK) Monomer on Bis-Tris PAGE under reduced condition. The purity is greater than 95%.

SEC-HPLC



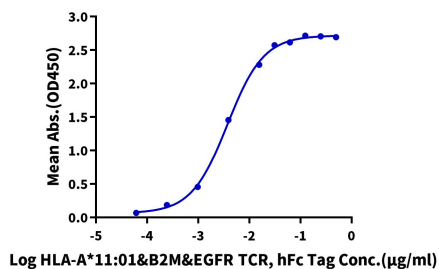
The purity of Biotinylated Human HLA-A*11:01&B2M&EGFR L858R (KITDFGRAK) Monomer is greater than 95% as determined by SEC-HPLC.

Assay Data

ELISA Data

Biotinylated Human HLA-A*11:01&B2M&EGFR L858R (KITDFGRAK) Monomer, His Tag ELISA

0.2µg Biotinylated Human HLA-A*11:01&B2M&EGFR L858R (KITDFGRAK) Monomer, His Tag Per Well



Immobilized Biotinylated Human HLA-A*11:01&B2M&EGFR L858R (KITDFGRAK) Monomer, His Tag at 2µg/ml (100µl/well) on the streptavidin precoated plate (5µg/ml). Dose response curve for HLA-A*11:01&B2M&EGFR TCR with the EC50 of 3.7ng/ml determined by ELISA (QC Test).