

# Human HLA-A\*11:01&B2M&EGFR L858R (KITDFGRAK) Tetramer Protein



Cat. No. MHC-HM479T

## Description

|                         |   |
|-------------------------|---|
| <b>Source</b>           | Recombinant Human HLA-A*11:01&B2M&EGFR L858R (KITDFGRAK) Tetramer Protein is expressed from HEK293 with His tag and Avi tag at the C-terminus, tetramer is assembled by biotinylated monomer and streptavidin.<br>It contains Gly25-Thr305(HLA-A*11:01), Ile21-Met119(B2M) and KITDFGRAK peptide. |
| <b>Accession</b>        | AAV53343.1(HLA-A*11:01)&P61769(B2M)&KITDFGRAK   |
| <b>Molecular Weight</b> | The protein has a predicted MW of 201.60 kDa. Due to glycosylation, the protein migrates to 205-220 kDa based on Bis-Tris PAGE result.  |
| <b>Endotoxin</b>        | Less than 1EU per µg by the LAL method.   |
| <b>Purity</b>           | >95% as determined by Bis-Tris PAGE<br>>95% as determined by HPLC   |

## Formulation and Storage

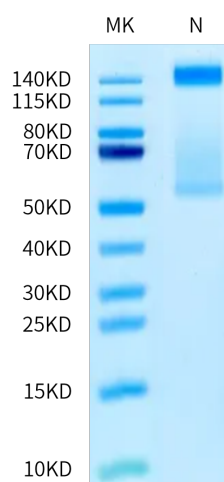
|                    |  |
|--------------------|--|
| <b>Formulation</b> | Supplied as 0.22 µm filtered solution in PBS (pH 7.4).   |
| <b>Storage</b>     | Valid for 12 months from date of receipt when stored at -80°C. Recommend to aliquot the protein into smaller quantities for optimal storage. Please minimize freeze-thaw cycles. |

## Background

The epidermal growth factor receptor is a transmembrane protein that is a receptor for members of the epidermal growth factor family of extracellular protein ligands. The epidermal growth factor receptor is a member of the ErbB family of receptors, a subfamily of four closely related receptor tyrosine kinases: EGFR, HER2/neu, Her 3 and Her 4. Receptor tyrosine kinase binding ligands of the EGF family and activating several signaling cascades to convert extracellular cues into appropriate cellular responses.

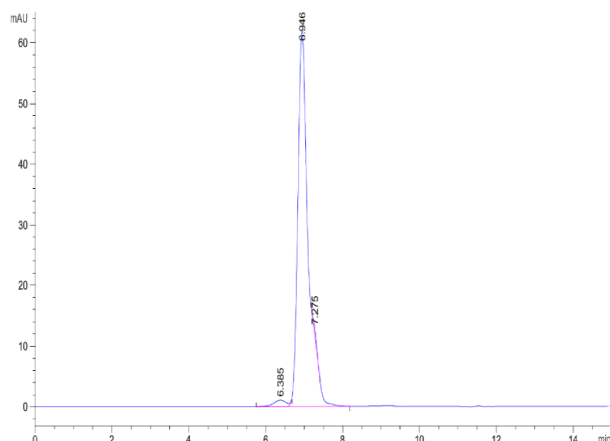
## Assay Data

### Bis-Tris PAGE



Human HLA-A\*11:01&B2M&EGFR L858R (KITDFGRAK) Tetramer on Bis-Tris PAGE under reduced condition. The purity is greater than 95%.

### SEC-HPLC



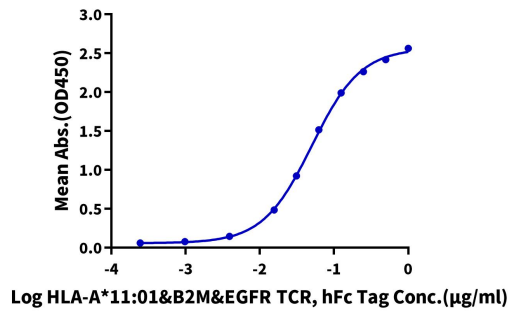
The purity of Human HLA-A\*11:01&B2M&EGFR L858R (KITDFGRAK) Tetramer is greater than 95% as determined by SEC-HPLC.

Assay Data

ELISA Data

Human HLA-A\*11:01&B2M&EGFR L858R (KITDFGRAK) Tetramer, His Tag ELISA

0.2µg Human HLA-A\*11:01&B2M&EGFR L858R (KITDFGRAK) Tetramer, His Tag Per Well



Immobilized Human HLA-A\*11:01&B2M&EGFR L858R (KITDFGRAK) Tetramer, His Tag at 2µg/ml (100µl/well) on the plate. Dose response curve for HLA-A\*11:01&B2M&EGFR TCR, hFc Tag with the EC50 of 50.3ng/ml determined by ELISA.