

Biotinylated Human HLA-A*02:01&B2M&EBV BMLF1 (GLCTLVAML) Monomer Protein



Cat. No. MHC-HM497B

Description

Source	Recombinant Biotinylated Human HLA-A*02:01&B2M&EBV BMLF1 (GLCTLVAML) Monomer Protein is expressed from HEK293 with His tag and Avi tag at the C-terminus. It contains Gly25-Thr305(HLA-A*02:01), Ile21-Met119(B2M) and GLCTLVAML peptide.
Accession	A0A140T913(HLA-A*02:01)&P61769(B2M)&GLCTLVAML
Molecular Weight	The protein has a predicted MW of 50.33 kDa. Due to glycosylation, the protein migrates to 52-65 kDa based on Bis-Tris PAGE result.
Endotoxin	Less than 1 EU per µg by the LAL method.
Purity	> 95% as determined by Bis-Tris PAGE > 95% as determined by HPLC

Formulation and Storage

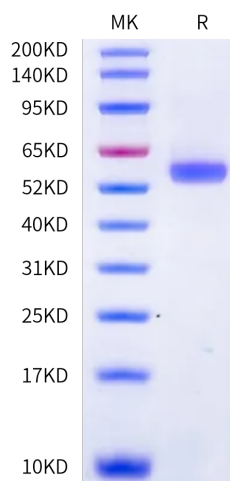
Formulation	Lyophilized from 0.22 µm filtered solution in PBS, 100mM L-Arginine (pH 7.4). Normally 8% trehalose is added as protectant before lyophilization.
Reconstitution	Dissolve the lyophilized protein in distilled water. Please refer to the Certificate of Analysis for detailed instructions.
Storage	-20 to -80°C for 12 months as supplied from date of receipt. -80°C for 3 months after reconstitution. Recommend to aliquot the protein into smaller quantities for optimal storage. Please minimize freeze-thaw cycles.

Background

Epstein-Barr virus (EBV) encodes a gene product in the BamHI-M leftward reading frame 1 (BMLF1) that functions as a promiscuous transactivator acting upon many other enhancer-promoter combinations. It also promotes the nuclear export of a subset of early and late viral mRNAs and is essential for the production of infectious virions.

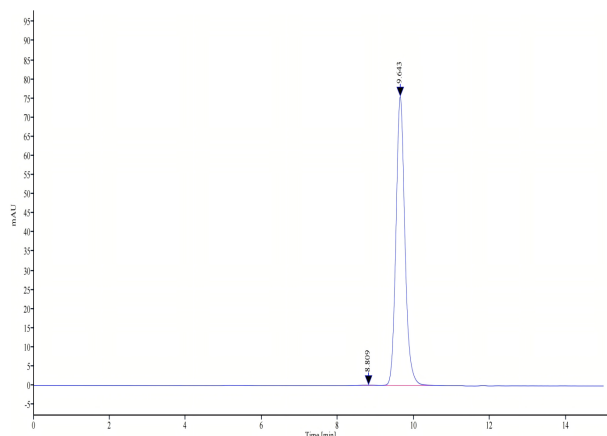
Assay Data

Bis-Tris PAGE



Biotinylated Human HLA-A*02:01&B2M&EBV BMLF1 (GLCTLVAML) Monomer on Bis-Tris PAGE under reduced condition. The purity is greater than 95%.

SEC-HPLC



The purity of Biotinylated Human HLA-A*02:01&B2M&EBV BMLF1 (GLCTLVAML) Monomer is greater than 95% as determined by SEC-HPLC.