

Human HLA-A*11:01&B2M&EGFR (KITDFGRAK) Tetramer Protein

Cat. No. MHC-HM4A2T

Description

Source Recombinant Human HLA-A*11:01&B2M&EGFR (KITDFGRAK) Tetramer Protein is expressed from HEK293 with His tag and Avi tag at the C-terminus, tetramer is assembled by biotinylated monomer and streptavidin. It contains Gly25-Thr305(HLA-A*11:01), Ile21-Met119(B2M) and KITDFGRAK peptide.

Accession AAV53343.1(HLA-A*11:01)&P61769(B2M)&KITDFGRAK

Molecular Weight The protein has a predicted MW of 258 kDa. Due to glycosylation, the protein migrates to 260-265 kDa under Non reducing (N) condition based on Bis-Tris PAGE result.

Endotoxin Less than 1EU per µg by the LAL method.

Purity >95% as determined by Bis-Tris PAGE

>95% as determined by HPLC

Formulation and Storage

Formulation Supplied as 0.22 µm filtered solution in PBS (pH 7.4).

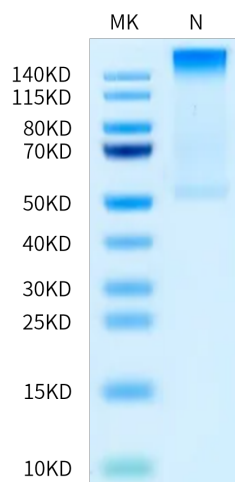
Storage Valid for 12 months from date of receipt when stored at -80°C. Recommend to aliquot the protein into smaller quantities for optimal storage. Please minimize freeze-thaw cycles.

Background

The epidermal growth factor receptor is a transmembrane protein that is a receptor for members of the epidermal growth factor family of extracellular protein ligands. The epidermal growth factor receptor is a member of the ErbB family of receptors, a subfamily of four closely related receptor tyrosine kinases: EGFR, HER2/neu, Her 3 and Her 4. Receptor tyrosine kinase binding ligands of the EGF family and activating several signaling cascades to convert extracellular cues into appropriate cellular responses.

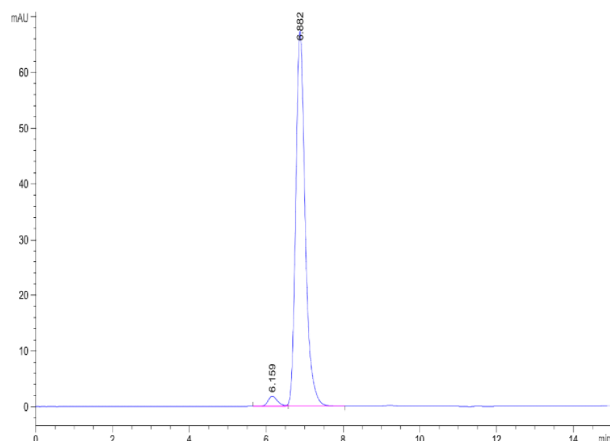
Assay Data

Bis-Tris PAGE



Human HLA-A*11:01&B2M&EGFR (KITDFGRAK) Tetramer on Bis-Tris PAGE under Non reducing (N) condition. The purity is greater than 95%.

SEC-HPLC



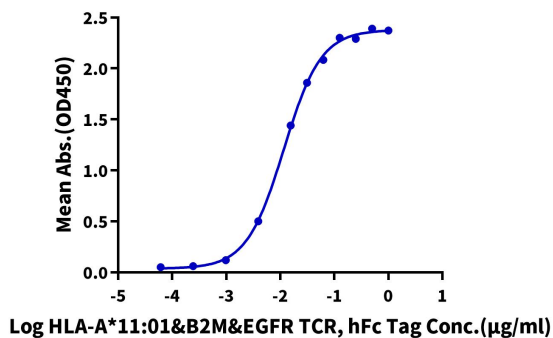
The purity of Human HLA-A*11:01&B2M&EGFR (KITDFGRAK) Tetramer is greater than 95% as determined by SEC-HPLC.

Assay Data

ELISA Data

Human HLA-A*11:01&B2M&EGFR (KITDFGRAK) Tetramer, His Tag ELISA

0.2µg Human HLA-A*11:01&B2M&EGFR (KITDFGRAK) Tetramer, His Tag Per Well



Immobilized Human HLA-A*11:01&B2M&EGFR (KITDFGRAK) Tetramer, His Tag at 2µg/ml(100µl/well) on the plate. Dose response curve for HLA-A*11:01&B2M&EGFR TCR with the EC50 of 11.6ng/ml determined by ELISA.