

# Biotinylated Human Peptide Ready HLA-A\*33:03&B2M Monomer Protein, Ultra Low Endotoxin



Cat. No. MHC-HM53RB-UL

## Description

<b>Source</b>	Recombinant Biotinylated Human Peptide Ready HLA-A*33:03&B2M Monomer Protein is expressed from HEK293 with His tag and Avi tag at the C-terminus. It contains Gly25-Thr305(HLA-A*33:03) and Ile21-Met119(B2M).
<b>Accession</b>	VCU43110.1(HLA-A*33:03)&P61769(B2M)
<b>Molecular Weight</b>	The protein has a predicted MW of 48.3 kDa. Due to glycosylation, the protein migrates to 50-65 kDa based on Bis-Tris PAGE result.
<b>Endotoxin</b>	Less than 0.01 EU per µg by the LAL method.
<b>Purity</b>	> 95% as determined by Bis-Tris PAGE > 95% as determined by HPLC

## Formulation and Storage

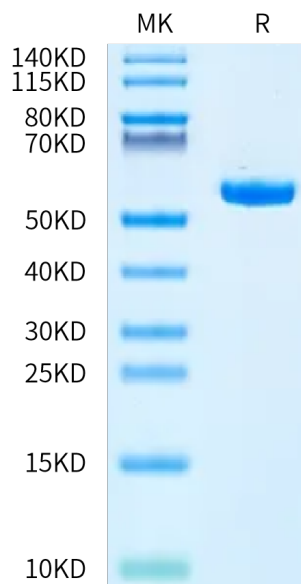
<b>Formulation</b>	Lyophilized from 0.22 µm filtered solution in PBS, 100mM L-arginine (pH 7.4). Normally 8% trehalose is added as protectant before lyophilization.
<b>Reconstitution</b>	Dissolve the lyophilized protein in distilled water. Please refer to the Certificate of Analysis for detailed instructions.
<b>Storage</b>	-20 to -80°C for 12 months as supplied from date of receipt. -80°C for 3 months after reconstitution. Recommend to aliquot the protein into smaller quantities for optimal storage. Please minimize freeze-thaw cycles.

## Background

HLA-A\*33:03&B2M&Peptide ready Monomer is absent from peptide, namely peptide-receptive MHC. It can be loaded with antigenic peptides matching HLA-A\*33:03. Peptide ready MHC molecules comprising human HLA alleles and B2M, which can be readily tetramerized and loaded with peptides of choice in a high-throughput manner.

## Assay Data

### Bis-Tris PAGE



Biotinylated Human Peptide Ready HLA-A\*33:03&B2M Monomer on Bis-Tris PAGE under reduced condition. The purity is greater than 95%.

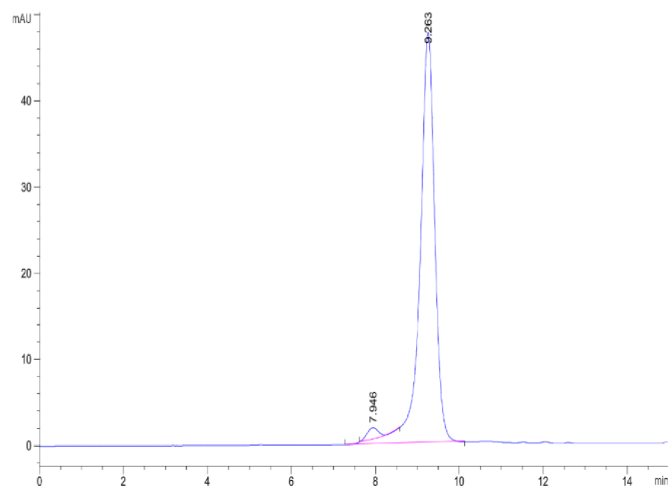
### SEC-HPLC

# Biotinylated Human Peptide Ready HLA-A\*33:03&B2M Monomer Protein, Ultra Low Endotoxin



Cat. No. MHC-HM53RB-UL

## Assay Data

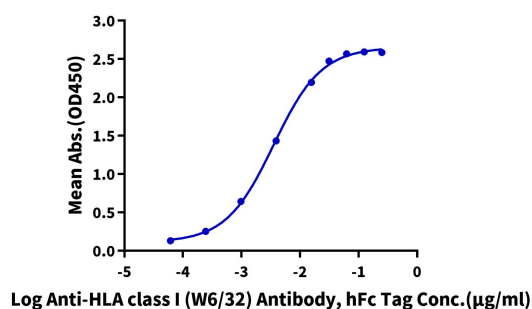


The purity of Biotinylated Human Peptide Ready HLA-A\*33:03&B2M Monomer is greater than 95% as determined by SEC-HPLC.

## ELISA Data

### Biotinylated Human Peptide Ready HLA-A\*33:03&B2M Monomer, His Tag ELISA

0.05µg Biotinylated Human Peptide Ready HLA-A\*33:03&B2M Monomer, His Tag Per Well



Immobilized Biotinylated Human Peptide Ready HLA-A\*33:03&B2M Monomer, His Tag at 0.5µg/ml (100µl/well) on the streptavidin precoated plate (5µg/ml). Dose response curve for Anti-HLA class I (W6/32) Antibody, hFc Tag with the EC<sub>50</sub> of 3.5ng/ml determined by ELISA.