

Biotinylated Human Peptide Ready HLA-B*27:05&B2M Monomer Protein

Cat. No. MHC-HM62RB

Description

Source	Recombinant Biotinylated Human Peptide Ready HLA-B*27:05&B2M Monomer Protein is expressed from HEK293 with His tag and Avi tag at the C-terminus. It contains Gly25-Thr305 (HLA-B*27:05) and Ile21-Met119 (B2M).
Accession	AAA36221.1(HLA-B*27:05)&P61769(B2M)
Molecular Weight	The protein has a predicted MW of 48.8 kDa. Due to glycosylation, the protein migrates to 50-60 kDa based on Tris-Bis PAGE result.
Endotoxin	Less than 1 EU per µg by the LAL method.
Purity	> 95% as determined by Bis-Tris PAGE > 95% as determined by HPLC

Formulation and Storage

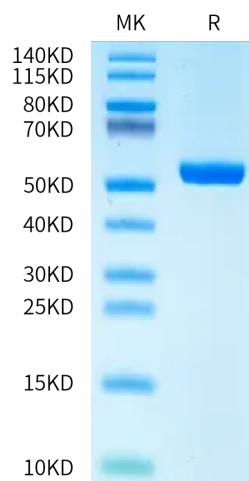
Formulation	Lyophilized from 0.22 µm filtered solution in PBS, 200mM L-Arginine (pH 7.4). Normally 8% trehalose is added as protectant before lyophilization.
Reconstitution	Dissolve the lyophilized protein in distilled water. Please refer to the Certificate of Analysis for detailed instructions.
Storage	-20 to -80°C for 12 months as supplied from date of receipt. -80°C for 3 months after reconstitution. Recommend to aliquot the protein into smaller quantities for optimal storage. Please minimize freeze-thaw cycles.

Background

HLA-B*27:05&B2M&Peptide ready Monomer is absent from peptide, namely peptide-receptive MHC. It can be loaded with antigenic peptides matching HLA-B*27:05. Peptide ready MHC molecules comprising human HLA alleles and B2M, which can be readily tetramerized and loaded with peptides of choice in a high-throughput manner.

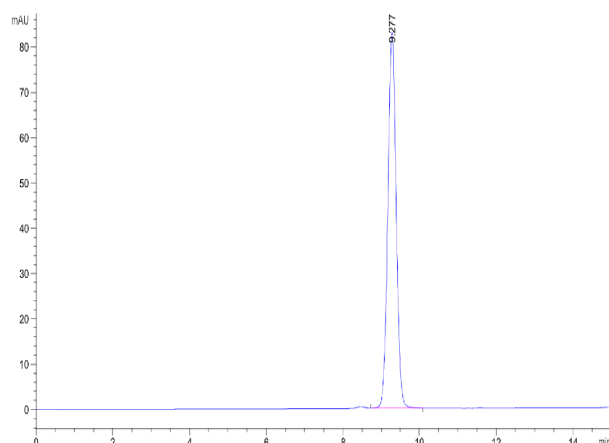
Assay Data

Bis-Tris PAGE



Biotinylated Human Peptide Ready HLA-B*27:05&B2M Monomer on Bis-Tris PAGE under reduced condition. The purity is greater than 95%.

SEC-HPLC



The purity of Biotinylated Human Peptide Ready HLA-B*27:05&B2M Monomer is greater than 95% as determined by SEC-HPLC.

Biotinylated Human Peptide Ready HLA-B*27:05&B2M Monomer Protein



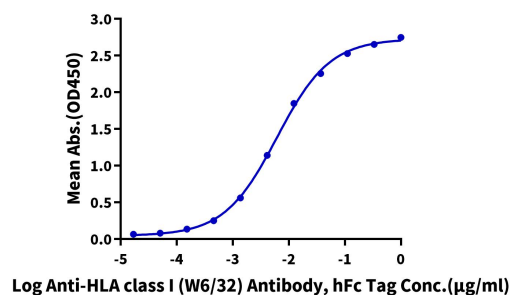
Cat. No. MHC-HM62RB

Assay Data

ELISA Data

Biotinylated Human Peptide Ready HLA-B*27:05&B2M Monomer, His Avi Tag ELISA

0.1µg Biotinylated Human Peptide Ready HLA-B*27:05&B2M Monomer, His Avi Tag Per Well



Immobilized Biotinylated Human Peptide Ready HLA-B*27:05&B2M Monomer, His Avi Tag at 1µg/ml (100µl/well) on the streptavidin precoated plate (5µg/ml). Dose response curve for Anti-HLA class I (W6/32) Antibody, hFc Tag with the EC50 of 6.2ng/ml determined by ELISA.