

Human MICA*012:08 Protein

Cat. No. MIC-HM106

Description

Source	Recombinant Human MICA*012:08 Protein is expressed from HEK293 with His tag at the C-terminus. It contains Glu24-Thr309.
Accession	C5NT78
Molecular Weight	The protein has a predicted MW of 34.52 kDa. Due to glycosylation, the protein migrates to 55-70 kDa based on Bis-Tris PAGE result.
Endotoxin	Less than 1EU per µg by the LAL method.
Purity	>95% as determined by Bis-Tris PAGE >95% as determined by HPLC

Formulation and Storage

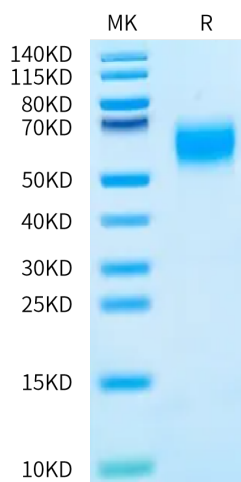
Formulation	Lyophilized from 0.22 µm filtered solution in PBS (pH 7.4). Normally 8% trehalose is added as protectant before lyophilization.
Reconstitution	Centrifuge the tube before opening. Reconstituting to a concentration more than 100 µg/ml is recommended. Dissolve the lyophilized protein in distilled water.
Storage	-20 to -80°C for 12 months as supplied from date of receipt. -80°C for 3 months after reconstitution. Recommend to aliquot the protein into smaller quantities for optimal storage. Please minimize freeze-thaw cycles.

Background

MICA (MHC class I chain-related gene A) is a transmembrane glycoprotein that functions as a ligand for human NKG2D. A closely related protein, MICB, shares 85% amino acid identity with MICA. These proteins are distantly related to the MHC class I proteins. They possess three extracellular Iglike domains, but they have no capacity to bind peptide or interact with beta 2-microglobulin..

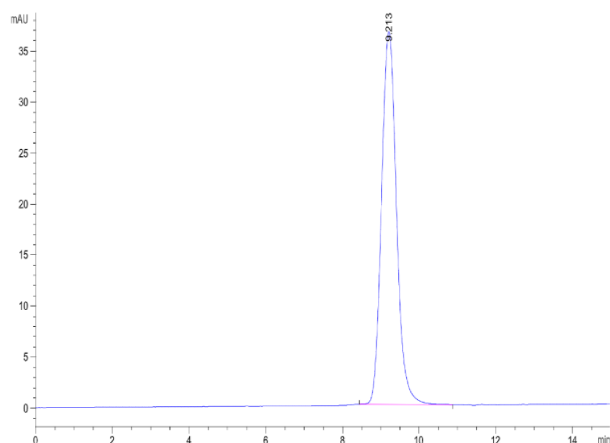
Assay Data

Bis-Tris PAGE



Human MICA*012:08 on Bis-Tris PAGE under reduced condition. The purity is greater than 95%.

SEC-HPLC



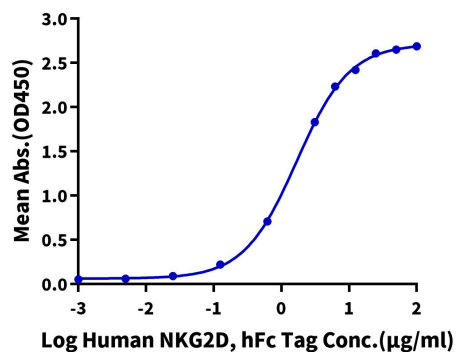
The purity of Human MICA*012:08 is greater than 95% as determined by SEC-HPLC.

Assay Data

ELISA Data

Human MICA*012:08, His Tag ELISA

0.5µg Human MICA*012:08, His Tag Per Well



Immobilized Human MICA*012:08, His Tag at 5µg/ml(100µl/well) on the plate. Dose response curve for Human NKG2D, hFc Tag with the EC50 of 1.69µg/ml determined by ELISA (QC Test).