

# Human MICA alpha 3 Protein

Cat. No. MIC-HM3AD



## Description

<b>Source</b>	Recombinant Human MICA alpha 3 Protein is expressed from HEK293 with mFc (IgG1) tag at the N-Terminus. It contains Arg105-Ser200.
<b>Accession</b>	NP_001276081.1
<b>Molecular Weight</b>	The protein has a predicted MW of 36.8 kDa. Due to glycosylation, the protein migrates to 50-65 kDa based on Bis-Tris PAGE result.
<b>Endotoxin</b>	Less than 1EU per µg by the LAL method.
<b>Purity</b>	> 95% as determined by Bis-Tris PAGE > 95% as determined by HPLC

## Formulation and Storage

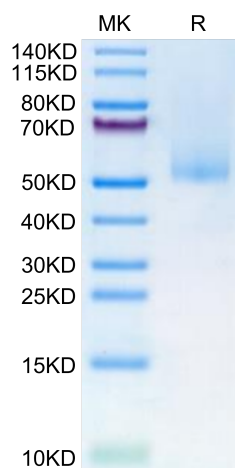
<b>Formulation</b>	Supplied as 0.22µm filtered solution in PBS (pH 7.4).
<b>Storage</b>	Valid for 12 months from date of receipt when stored at -80°C. Recommend to aliquot the protein into smaller quantities for optimal storage. Please minimize freeze-thaw cycles.

## Background

MICA (MHC class I chain-related gene A) is a transmembrane glycoprotein that functions as a ligand for human NKG2D. A closely related protein, MICB, shares 85% amino acid identity with MICA. These proteins are distantly related to the MHC class I proteins. They possess three extracellular Iglike domains, but they have no capacity to bind peptide or interact with beta 2-microglobulin..

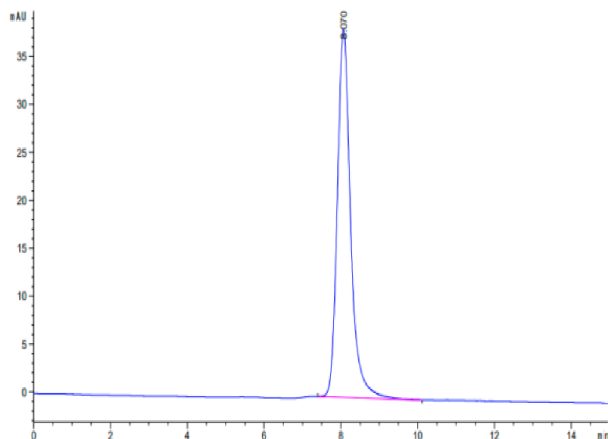
## Assay Data

### Bis-Tris PAGE



Human MICA alpha 3 on Bis-Tris PAGE under reduced condition. The purity is greater than 95%.

### SEC-HPLC



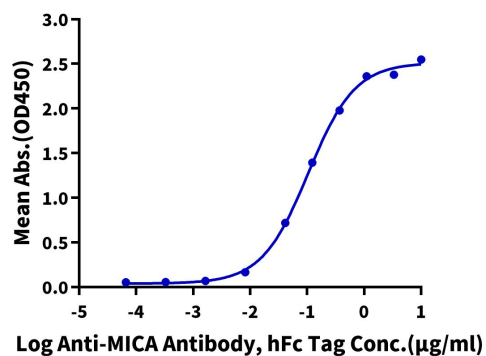
The purity of Human MICA alpha 3 is greater than 95% as determined by SEC-HPLC.

Assay Data

ELISA Data

**Human MICA alpha 3, mFc Tag ELISA**

0.2µg Human MICA alpha 3, mFc Tag Per Well



Immobilized Human MICA alpha 3, mFc Tag at 2µg/ml (100µl/well) on the plate. Dose response curve for Anti-MICA Antibody, hFc Tag with the EC50 of 0.10µg/ml determined by ELISA (QC Test).