

Non-biotinylated Human MICB Protein, Ultra Low Endotoxin

Cat. No. MIC-HM40B-UL

Description

Source	Recombinant Human MICB Protein is expressed from HEK293 with His tag and Avi tag at the C-Terminus. It contains Ala23-Gly298.
Accession	Q29980-1
Molecular Weight	The protein has a predicted MW of 34.4 kDa. Due to glycosylation, the protein migrates to 48-65 kDa based on Bis-Tris PAGE result.
Endotoxin	Less than 0.01 EU per µg by the LAL method.
Purity	> 95% as determined by Bis-Tris PAGE > 95% as determined by HPLC

Formulation and Storage

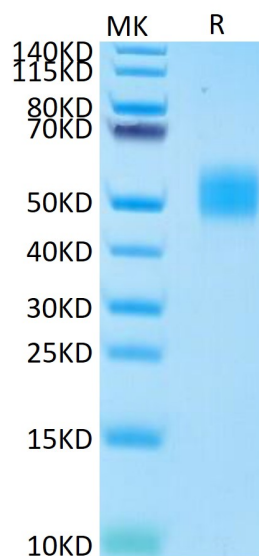
Formulation	Lyophilized from 0.22µm filtered solution in PBS (pH 7.4). Normally 8% trehalose is added as protectant before lyophilization.
Reconstitution	Dissolve the lyophilized protein in distilled water. Please refer to the Certificate of Analysis for detailed instructions.
Storage	-20 to -80°C for 12 months as supplied from date of receipt. -80°C for 3 months after reconstitution. Recommend to aliquot the protein into smaller quantities for optimal storage. Please minimize freeze-thaw cycles.

Background

MICB (MHC class I chain-related gene B) is a transmembrane glycoprotein that functions as a ligand for NKG2D. A closely related protein, MICA, shares 85% amino acid identity with MICB. MICB Seems to have no role in antigen presentation. Acts as a stress-induced self-antigen that is recognized by gamma delta T cells. Ligand for the KLRK1/NKG2D receptor. Binding to KLRK1 leads to cell lysis.

Assay Data

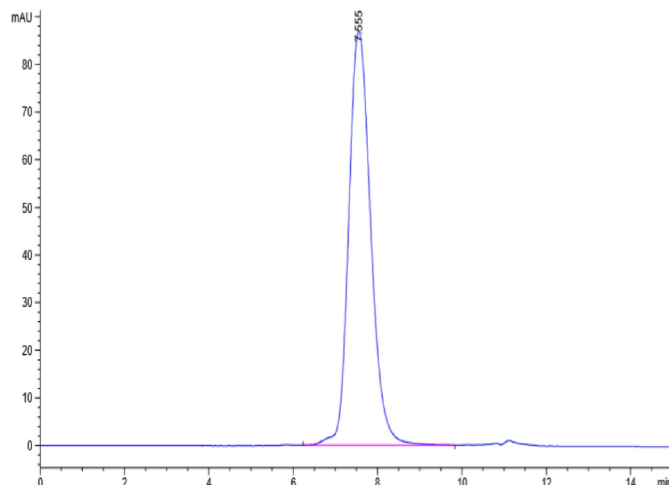
Bis-Tris PAGE



Human MICB on Bis-Tris PAGE under reduced conditions. The purity is greater than 95%.

SEC-HPLC

Assay Data

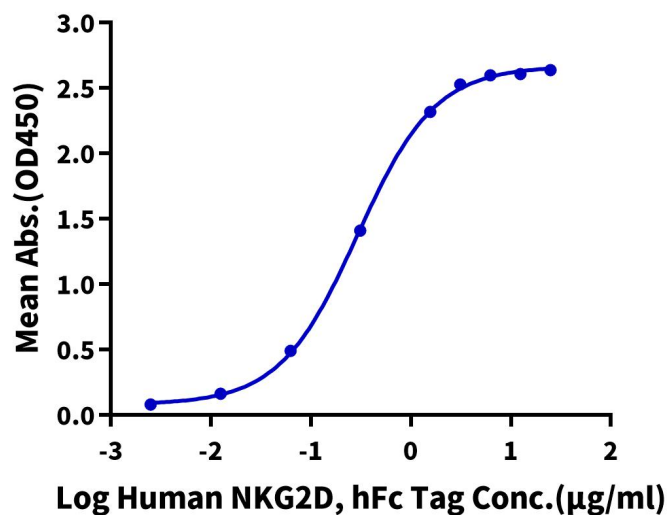


The purity of Human MICB is greater than 95% as determined by SEC-HPLC.

ELISA Data

Human MICB, His Tag ELISA

0.5µg Human MICB, His Tag Per Well



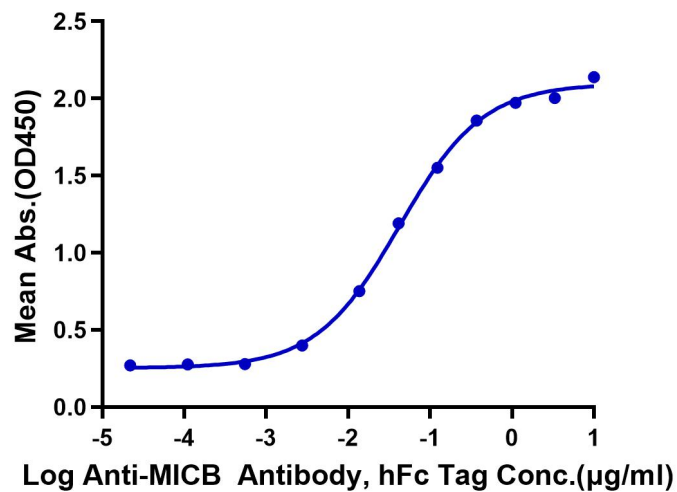
Immobilized Human MICB, His Tag at 5µg/ml (100µl/well) on the plate. Dose response curve for Human NKG2D, hFc Tag with the EC50 of 0.29µg/ml determined by ELISA (QC Test).

ELISA Data

Assay Data

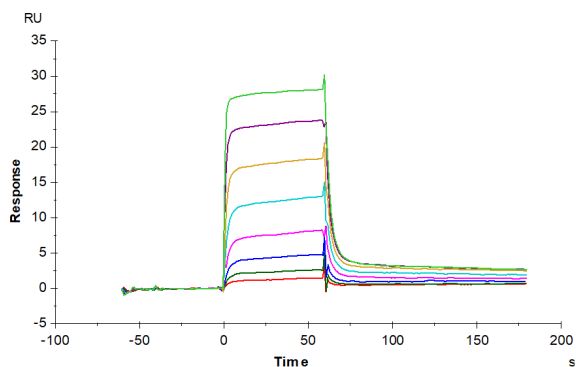
Human MICB, His Tag ELISA

0.1µg Human MICB, His Tag Per Well



Immobilized Human MICB, His Tag at 1µg/ml (100µl/well) on the plate. Dose response curve for Anti-MICB Antibody, hFc Tag with the EC50 of 42.4ng/ml determined by ELISA.

SPR Data



Human NKG2D, hFc Tag captured on CM5 Chip via Protein A can bind Human MICB, His Tag with an affinity constant of 83.31 nM as determined in SPR assay (Biacore T200).