

Mouse Midkine Protein

Cat. No. MID-ME101

Description

Source	Recombinant Mouse Midkine Protein is expressed from E.coli with His tag at the N-Terminus. It contains Lys23-Asp140.
Accession	P12025
Molecular Weight	The protein has a predicted MW of 14.03 kDa. The protein migrates to 18-23 kDa based on Bis-Tris PAGE result.
Endotoxin	Less than 1EU per µg by the LAL method.
Purity	> 95% as determined by Bis-Tris PAGE

Formulation and Storage

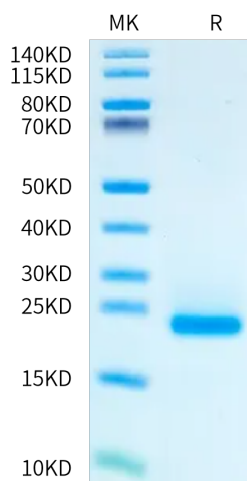
Formulation	Supplied as 0.22µm filtered solution in PBS, 350mM NaCl, 200mM L-arginine (pH 7.4).
Storage	Valid for 12 months from date of receipt when stored at -80°C. Recommend to aliquot the protein into smaller quantities for optimal storage. Please minimize freeze-thaw cycles.

Background

Midkine is a heparin-binding growth factor, originally reported as the product of a retinoic acid-responsive gene during embryogenesis, but currently viewed as a multifaceted factor contributing to both normal tissue homeostasis and disease development. Midkine is abnormally expressed at high levels in various human malignancies and acts as a mediator for the acquisition of critical hallmarks of cancer, including cell growth, survival, metastasis, migration, and angiogenesis.

Assay Data

Bis-Tris PAGE



Mouse Midkine on Bis-Tris PAGE under reduced condition. The purity is greater than 95%.