

# Cynomolgus CD10/MME Protein

Cat. No. MME-CM110

## Description

<b>Source</b>	Recombinant Cynomolgus CD10/MME Protein is expressed from HEK293 with His tag at the N-Terminus. It contains Asp53-Trp750.
<b>Accession</b>	G7NZK8
<b>Molecular Weight</b>	The protein has a predicted MW of 80.69 kDa. Due to glycosylation, the protein migrates to 81-110 kDa based on Bis-Tris PAGE result.
<b>Endotoxin</b>	Less than 1EU per µg by the LAL method.
<b>Purity</b>	> 95% as determined by Bis-Tris PAGE > 95% as determined by HPLC

## Formulation and Storage

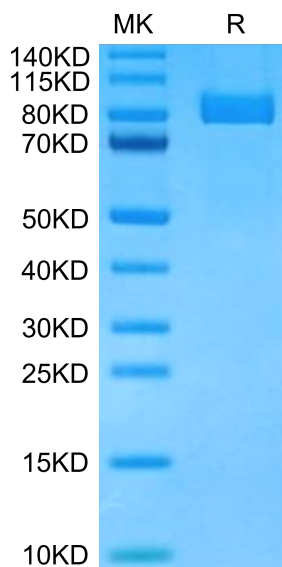
<b>Formulation</b>	Supplied as 0.22µm filtered solution in PBS (pH 7.4).
<b>Storage</b>	Valid for 12 months from date of receipt when stored at -80°C. Recommend to aliquot the protein into smaller quantities for optimal storage. Please minimize freeze-thaw cycles.

## Background

CD10 is an endopeptidase that degrades various bioactive peptides in the extracellular matrix. In addition to enzymatic degradation, it affects multiple intracellular signal transduction pathways. CD10 expression has been extensively studied in human epithelial cancers of numerous organs and sites. CD10 expression pattern depended on the histotypes of thyroid lesions. When possible metastatic tumours and non-epithelial tumours are excluded, high CD10 expression may be useful in determining whether a primary thyroid carcinoma includes an anaplastic component.

## Assay Data

### Bis-Tris PAGE



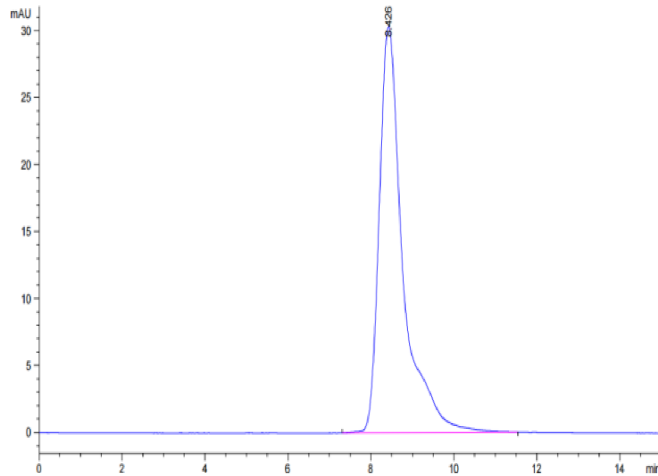
Cynomolgus CD10 on Bis-Tris PAGE under reduced condition. The purity is greater than 95%.

### SEC-HPLC

## Cynomolgus CD10/MME Protein

Cat. No. MME-CM110

### Assay Data



The purity of Cynomolgus CD10 is greater than 95% as determined by SEC-HPLC.

### Bioactivity Data

Measured by its ability to cleave the fluorogenic peptide substrate, Mca-RPPGSAFK (Dnp) -OH. The specific activity is > 1200 pmoles/min/μg.