

Cynomolgus MMP-8 Protein

Cat. No. MMP-CM108



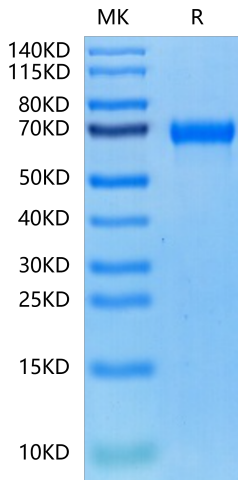
Description	
Source	Recombinant Cynomolgus MMP-8 Protein is expressed from HEK293 with His tag at the C-Terminus. The protein needs to be activated by APMA to have hydrolytic activity. It contains Phe21-Ser467.
Accession	XP_005579523.2
Molecular Weight	The protein has a predicted MW of 52.27 kDa. Due to glycosylation, the protein migrates to 60-70 kDa based on Bis-Tris PAGE result.
Endotoxin	Less than 1 EU per µg by the LAL method.
Purity	> 95% as determined by Bis-Tris PAGE > 95% as determined by HPLC

Formulation and Storage	
Formulation	Supplied as 0.22µm filtered solution in 50mM Tris, 150mM NaCL,10mM CaCl2 (pH 7.4).
Storage	Valid for 12 months from date of receipt when stored at -80°C.Recommend to aliquot the protein into smaller quantities for optimal storage. Please minimize freeze-thaw cycles.

Background	
Alteration of matrix metalloproteinases (MMPs) and tissue inhibitors of metalloproteinases (TIMPs) expression has been studied for various cardiac diseases, including dilated cardiomyopathy (DCM), with the significance of surrogate markers of extracellular matrix (ECM) remodeling. MMP-8 was identified only in myocytes, while MMP-9 and TIMP-2 were present in both myocytes and stroma, but with different intensity. The increasing intensity of MMP-8 and TIMP-2 immunoreactions was significantly associated with low HCS.	

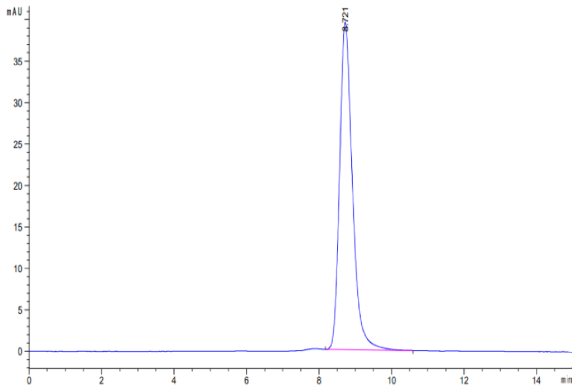
Assay Data

Bis-Tris PAGE



Cynomolgus MMP-8 on Bis-Tris PAGE under reduced condition. The purity is greater than 95%.

SEC-HPLC



The purity of Cynomolgus MMP-8 is greater than 95% as determined by SEC-HPLC.

Cynomolgus MMP-8 Protein

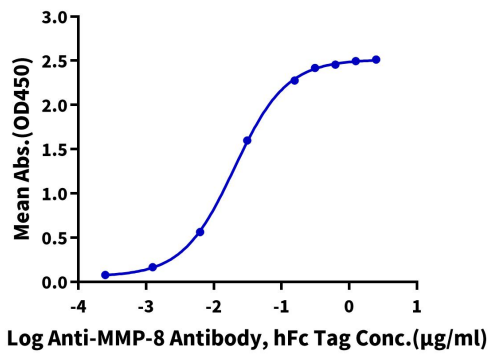
Cat. No. MMP-CM108



Assay Data

ELISA Data

Cynomolgus MMP-8, His Tag ELISA  
0.5µg Cynomolgus MMP-8, His Tag Per Well



Immobilized Cynomolgus MMP-8, His Tag at 5µg/ml (100µl/well) on the plate. Dose response curve for Anti-MMP-8 Antibody, hFc Tag with the EC50 of 20.2ng/ml determined by ELISA (QC tested).

Bioactivity Data

Measured by its ability to cleave a fluorogenic peptide substrate Mca-KPLGL-Dpa-AR-NH2. The specific activity is >200 pmol/min/µg (QC tested).