

# Cynomolgus MMP-8 Protein

Cat. No. MMP-CM108



## Description

<b>Source</b>	Recombinant Cynomolgus MMP-8 Protein is expressed from HEK293 with His tag at the C-Terminus. It contains Phe21-Ser467.
<b>Accession</b>	XP_005579523.2
<b>Molecular Weight</b>	The protein has a predicted MW of 52.27 kDa. Due to glycosylation, the protein migrates to 60-70 kDa based on Tris-Bis PAGE result.
<b>Endotoxin</b>	Less than 1EU per µg by the LAL method.
<b>Purity</b>	> 95% as determined by Tris-Bis PAGE > 95% as determined by HPLC

## Formulation and Storage

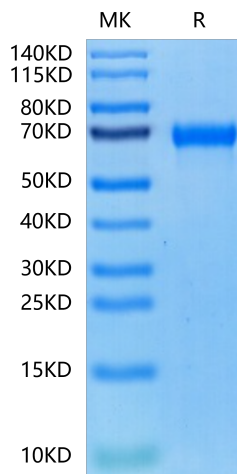
<b>Formulation</b>	Lyophilized from 0.22µm filtered solution in PBS (pH 7.4). Normally 8% trehalose is added as protectant before lyophilization.
<b>Reconstitution</b>	Centrifuge the tube before opening. Reconstituting to a concentration more than 100 µg/ml is recommended. Dissolve the lyophilized protein in distilled water.
<b>Storage</b>	-20 to -80°C for 12 months as supplied from date of receipt. -20 to -80°C for 3-6 months in unopened state after reconstitution. 2-8°C for 2-7 days after reconstitution. Recommend to aliquot the protein into smaller quantities for optimal storage. Please minimize freeze-thaw cycles.

## Background

Alteration of matrix metalloproteinases (MMPs) and tissue inhibitors of metalloproteinases (TIMPs) expression has been studied for various cardiac diseases, including dilated cardiomyopathy (DCM), with the significance of surrogate markers of extracellular matrix (ECM) remodeling. MMP-8 was identified only in myocardiocytes, while MMP-9 and TIMP-2 were present in both myocardiocytes and stroma, but with different intensity. The increasing intensity of MMP-8 and TIMP-2 immunoreactions was significantly associated with low HCS.

## Assay Data

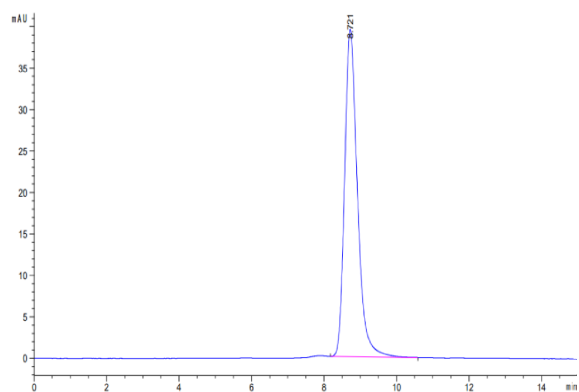
### Tris-Bis PAGE



Cynomolgus MMP-8 on Tris-Bis PAGE under reduced condition. The purity is greater than 95%.

### SEC-HPLC

Assay Data



The purity of Cynomolgus MMP-8 is greater than 95% as determined by SEC-HPLC.

# Cynomolgus MMP-8 Protein

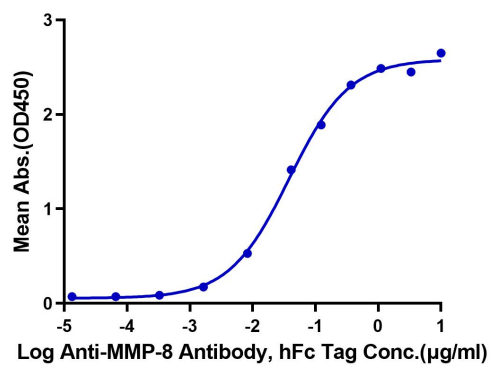
Cat. No. MMP-CM108

## Assay Data

### ELISA Data

#### Cynomolgus MMP-8, His Tag ELISA

0.2 $\mu$ g Cynomolgus MMP-8, His Tag Per Well



Immobilized Cynomolgus MMP-8, His Tag at 2 $\mu$ g/ml (100 $\mu$ l/well) on the plate. Dose response curve for Anti-MMP-8 Antibody, hFc Tag with the EC50 of 38.2ng/ml determined by ELISA (QC tested).

### Bioactivity Data

Measured by its ability to cleave a fluorogenic peptide substrate Mca-KPLGL-Dpa-AR-NH<sub>2</sub>, The specific activity is >200 pmol/min/ $\mu$ g (QC tested).