

# Human MMP-8 Protein (pro form)

Cat. No. MMP-HM108

## Description

<b>Source</b>	Recombinant Human MMP-8 Protein is expressed from Expi293 with His tag at the C-terminal. It contains Phe21-Gly467.
<b>Accession</b>	P22894
<b>Molecular Weight</b>	The protein has a predicted MW of 52.2 kDa. Due to glycosylation, the protein migrates to 65-70 kDa based on Tris-Bis PAGE result.
<b>Endotoxin</b>	Less than 1EU per µg by the LAL method.
<b>Purity</b>	> 95% as determined by Tris-Bis PAGE > 95% as determined by HPLC

## Formulation and Storage

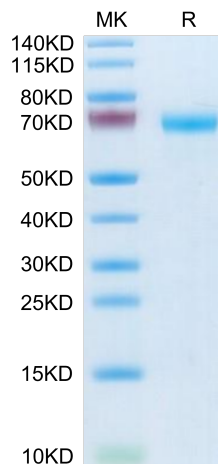
<b>Formulation</b>	Lyophilized from 0.22µm filtered solution in 50mM Tris, 10mM CaCl <sub>2</sub> , 150mM NaCl (pH 7.5). Normally 5% trehalose is added as protectant before lyophilization.
<b>Reconstitution</b>	Centrifuge tubes before opening. Reconstituting to a concentration more than 100 µg/ml is recommended (usually we use 1mg/ml solution for lyophilization). Dissolve the lyophilized protein in distilled water.
<b>Storage</b>	-20 to -80°C for 12 months as supplied from date of receipt. -20 to -80°C for 3-6 months in unopened state after reconstitution. 2-8°C for 2-7 days after reconstitution. Recommend to aliquot the protein into smaller quantities for optimal storage. Please avoid freeze-thaw cycles.

## Background

Alteration of matrix metalloproteinases (MMPs) and tissue inhibitors of metalloproteinases (TIMPs) expression has been studied for various cardiac diseases, including dilated cardiomyopathy (DCM), with the significance of surrogate markers of extracellular matrix (ECM) remodeling. MMP-8 was identified only in myocardiocytes, while MMP-9 and TIMP-2 were present in both myocardiocytes and stroma, but with different intensity. The increasing intensity of MMP-8 and TIMP-2 immunoreactions was significantly associated with low HCS.

## Assay Data

### Tris-Bis PAGE



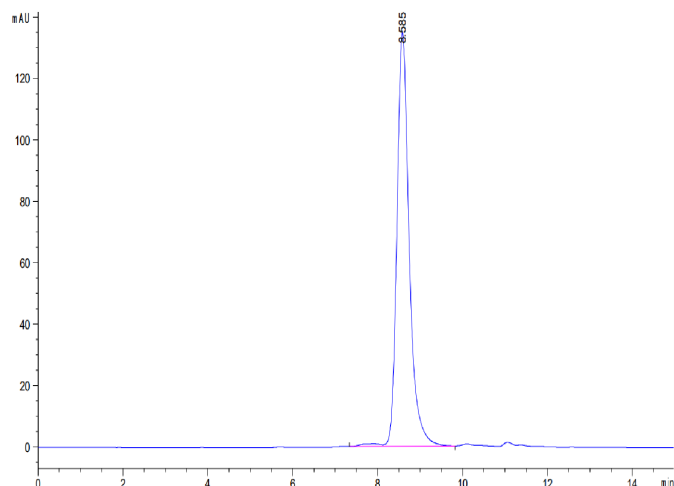
Human MMP-8 on Tris-Bis PAGE under reduced condition. The purity is greater than 95%.

### SEC-HPLC

# Human MMP-8 Protein (pro form)

Cat. No. MMP-HM108

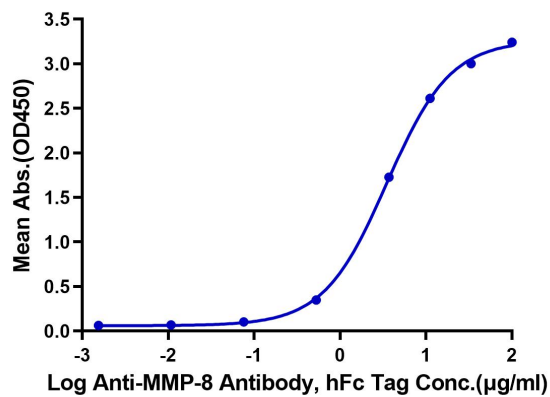
## Assay Data



The purity of Human MMP-8 is greater than 95% as determined by SEC-HPLC.

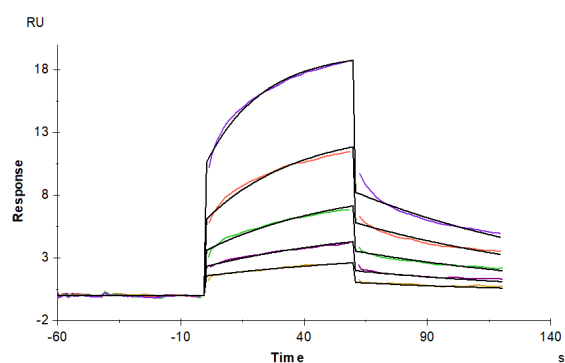
## ELISA Data

**Human MMP-8, His Tag ELISA**  
0.5µg Human MMP-8, His Tag Per Well



Immobilized Human MMP-8, His Tag at 5µg/ml (100µl/well) on the plate. Dose response curve for Anti-MMP-8 Antibody, hFc Tag with the EC50 of 3.5µg/ml determined by ELISA.

## SPR Data



Anti-MMP-8 Antibody captured on CM5 Chip via Protein A can bind Human MMP-8, His Tag with an affinity constant of 1.14 µM as determined in SPR assay (Biacore T200).