

Cynomolgus c-MPL/Thrombopoietin R Protein

Cat. No. MPL-CM101

Description

Source	Recombinant Cynomolgus c-MPL/Thrombopoietin R Protein is expressed from HEK293 with His tag at the C-Terminus. It contains Gln22-Thr489.
Accession	A0A2K5UGC7
Molecular Weight	The protein has a predicted MW of 53.48 kDa. Due to glycosylation, the protein migrates to 60-70 kDa based on Bis-Tris PAGE result.
Endotoxin	Less than 1EU per µg by the LAL method.
Purity	> 95% as determined by Bis-Tris PAGE

Formulation and Storage

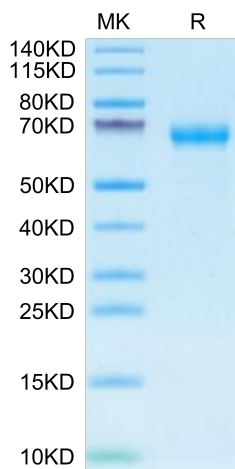
Formulation	Supplied as 0.22µm filtered solution in 20mM Tris, 500mM NaCl, 3mM DTT, 10% Glycerol (pH 7.5).
Storage	Valid for 12 months from date of receipt when stored at -80°C. Recommend to aliquot the protein into smaller quantities for optimal storage. Please minimize freeze-thaw cycles.

Background

The c-mpl gene encodes a member of the hematopoietic cytokine receptor superfamily. This gene was discovered through the study of a murine retrovirus which induces an acute myeloproliferative syndrome in mice. MPLV (for myeloproliferative leukemia virus) has transduced a truncated and constitutively activated form of the c-mpl receptor chain. High levels of c-mpl expression were detected in 45% of acute myeloid leukemia (AML). No correlation was found between c-mpl expression and the French-American-British classification subtype of AML.

Assay Data

Bis-Tris PAGE

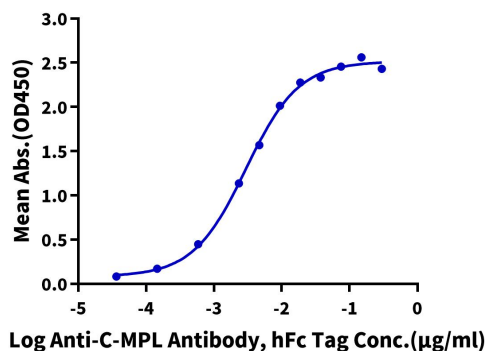


Cynomolgus c-MPL on Bis-Tris PAGE under reduced condition. The purity is greater than 95%.

ELISA Data

Cynomolgus c-MPL, His Tag ELISA

0.1µg Cynomolgus c-MPL, His Tag Per Well



Immobilized Cynomolgus c-MPL, His Tag at 1µg/ml (100µl/well) on the plate. Dose response curve for Anti-C-MPL Antibody, hFc Tag with the EC50 of 3.0ng/ml determined by ELISA (QC Test).