

# Canine c-MPL/Thrombopoietin R Protein

Cat. No. MPL-DM101



## Description

<b>Source</b>	Recombinant Canine c-MPL/Thrombopoietin R Protein is expressed from HEK293 with His tag at the C-terminus. It contains Gln22-Trp489.
<b>Accession</b>	XP_038543911.1
<b>Molecular Weight</b>	The protein has a predicted MW of 54.45 kDa. Due to glycosylation, the protein migrates to 65-75 kDa based on Tris-Bis PAGE result.
<b>Endotoxin</b>	Less than 1EU per µg by the LAL method.
<b>Purity</b>	> 95% as determined by Tris-Bis PAGE > 95% as determined by HPLC

## Formulation and Storage

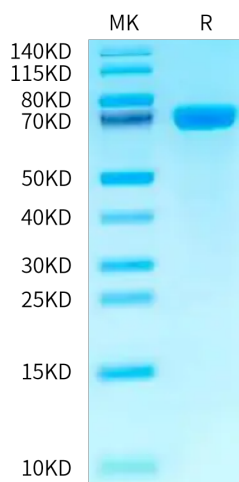
<b>Formulation</b>	Supplied as 0.22 µm filtered solution in PBS (pH 7.4).
<b>Storage</b>	Valid for 12 months from date of receipt when stored at -80°C. Recommend to aliquot the protein into smaller quantities for optimal storage. Please minimize freeze-thaw cycles.

## Background

The c-mpl gene encodes a member of the hematopoietic cytokine receptor superfamily. This gene was discovered through the study of a murine retrovirus which induces an acute myeloproliferative syndrome in mice. MPLV (for myeloproliferative leukemia virus) has transduced a truncated and constitutively activated form of the c-mpl receptor chain. High levels of c-mpl expression were detected in 45% of acute myeloid leukemia (AML). No correlation was found between c-mpl expression and the French-American-British classification subtype of AML.

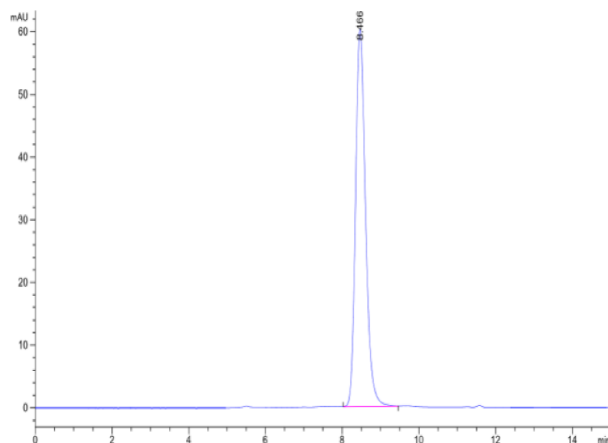
## Assay Data

### Tris-Bis PAGE



Canine c-MPL on Tris-Bis PAGE under reduced condition. The purity is greater than 95%.

### SEC-HPLC



The purity of Canine c-MPL is greater than 95% as determined by SEC-HPLC.