

Human MSLN/Mesothelin (M593V) Protein

Cat. No. MSL-HM182

Description

Source	Recombinant Human MSLN/Mesothelin (M593V) Protein is expressed from HEK293 with His tag at the C-terminus. It contains Glu296-Ser598 (M593V).
Accession	Q13421-3
Molecular Weight	The protein has a predicted MW of 35.20 kDa. Due to glycosylation, the protein migrates to 40-50 kDa based on Tris-Bis PAGE result.
Endotoxin	Less than 1EU per µg by the LAL method.
Purity	> 95% as determined by Tris-Bis PAGE > 95% as determined by HPLC

Formulation and Storage

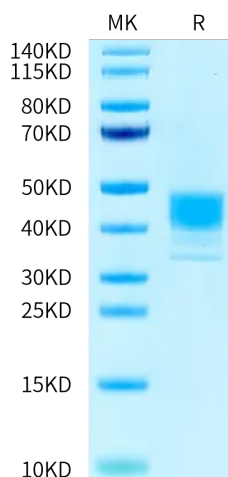
Formulation	Lyophilized from 0.22 µm filtered solution in PBS (pH 7.4). Normally 8% trehalose is added as protectant before lyophilization.
Reconstitution	Centrifuge the tube before opening. Reconstituting to a concentration more than 100 µg/ml is recommended. Dissolve the lyophilized protein in distilled water.
Storage	-20 to -80°C for 12 months as supplied from date of receipt. -80°C for 3-6 months after reconstitution. 2-8°C for 2-7 days after reconstitution. Recommend to aliquot the protein into smaller quantities for optimal storage. Please minimize freeze-thaw cycles.

Background

Mesothelin, also known as MSLN, is a protein that in humans is encoded by the MSLN gene. Cloning studies showed that the mesothelin gene encodes a precursor protein that is processed to yield mesothelin which is attached to the cell membrane by a glycoposphatidylinositol linkage and a 31-kDa shed fragment named megakaryocyte-potentiating factor (MPF). Although it has been proposed that mesothelin may be involved in cell adhesion, its biological function is not known. A knockout mouse line that lacks mesothelin reproduces and develops normally.

Assay Data

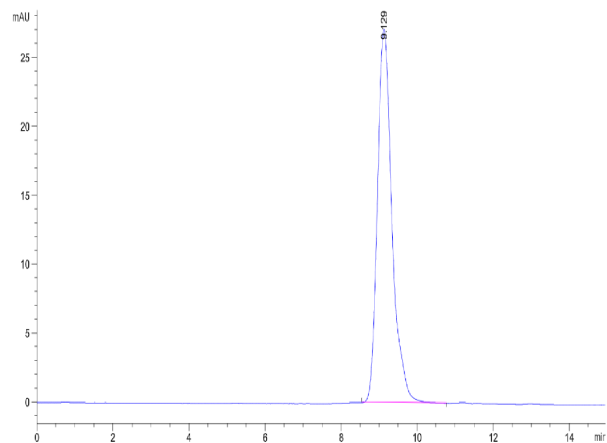
Tris-Bis PAGE



Human MSLN (M593V) on Tris-Bis PAGE under reduced condition. The purity is greater than 95%.

SEC-HPLC

Assay Data



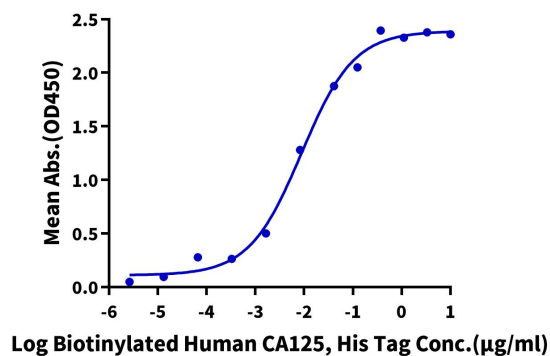
The purity of Human MSLN (M593V) is greater than 95% as determined by SEC-HPLC.

Assay Data

ELISA Data

Human MSLN (M593V), His Tag ELISA

0.1µg Human MSLN (M593V), His Tag Per Well

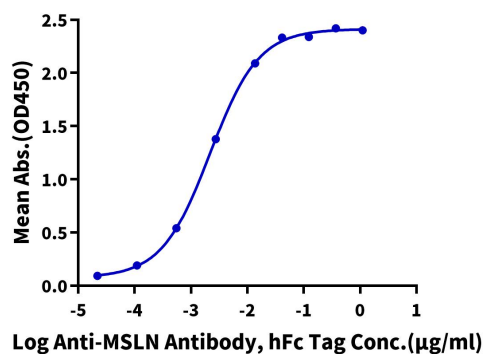


Immobilized Human MSLN (M593V), His Tag at 1µg/ml (100µl/well) on the plate. Dose response curve for Biotinylated Human CA125, His Tag with the EC50 of 8.8ng/ml determined by ELISA (QC Test).

ELISA Data

Human MSLN (M593V), His Tag ELISA

0.05µg Human MSLN (M593V), His Tag Per Well



Immobilized Human MSLN (M593V), His Tag at 0.5µg/ml (100µl/well) on the plate. Dose response curve for Anti-MSLN Antibody, hFc Tag with the EC50 of 2.2ng/ml determined by ELISA.