

Human MSLN/Mesothelin Protein, Ultra Low Endotoxin

Cat. No. MSL-HM280-UL

Description

Source	Recombinant Human MSLN/Mesothelin Protein is expressed from HEK293 with hFc (IgG1) tag at the C-Terminus. It contains Glu296-Gly580.
Accession	Q13421-2
Molecular Weight	The protein has a predicted MW of 59 kDa. Due to glycosylation, the protein migrates to 68-78 kDa based on Bis-Tris PAGE result.
Endotoxin	Less than 0.01 EU per µg by the LAL method.
Purity	> 95% as determined by Bis-Tris PAGE

Formulation and Storage

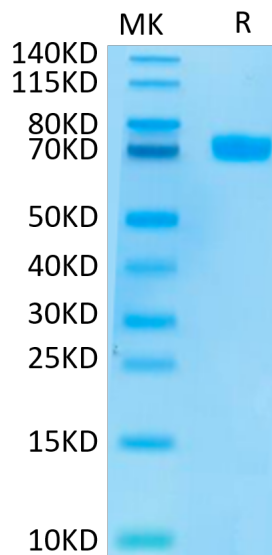
Formulation	Lyophilized from 0.22µm filtered solution in PBS (pH 7.4). Normally 8% trehalose is added as protectant before lyophilization.
Reconstitution	Dissolve the lyophilized protein in distilled water. Please refer to the Certificate of Analysis for detailed instructions.
Storage	-20 to -80°C for 12 months as supplied from date of receipt. -80°C for 3 months after reconstitution. Recommend to aliquot the protein into smaller quantities for optimal storage. Please minimize freeze-thaw cycles.

Background

Mesothelin, also known as MSLN, is a protein that in humans is encoded by the MSLN gene. Cloning studies showed that the mesothelin gene encodes a precursor protein that is processed to yield mesothelin which is attached to the cell membrane by a glycoposphatidylinositol linkage and a 31-kDa shed fragment named megakaryocyte-potentiating factor (MPF). Although it has been proposed that mesothelin may be involved in cell adhesion, its biological function is not known. A knockout mouse line that lacks mesothelin reproduces and develops normally.

Assay Data

Bis-Tris PAGE



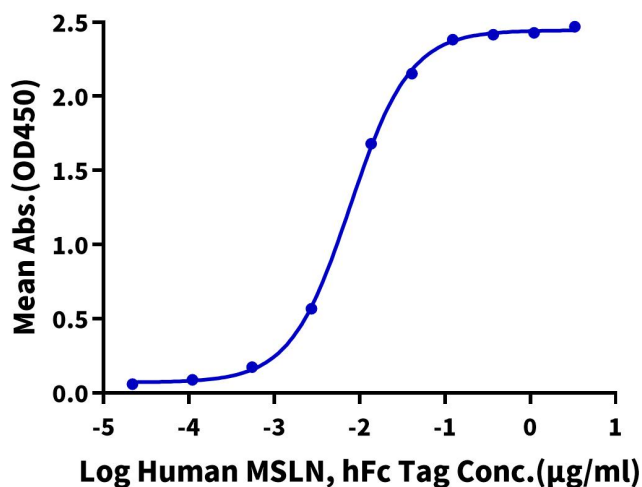
Human MSLN on Bis-Tris PAGE under reduced conditions. The purity is greater than 95%.

ELISA Data

Assay Data

Human MSLN, hFc Tag ELISA

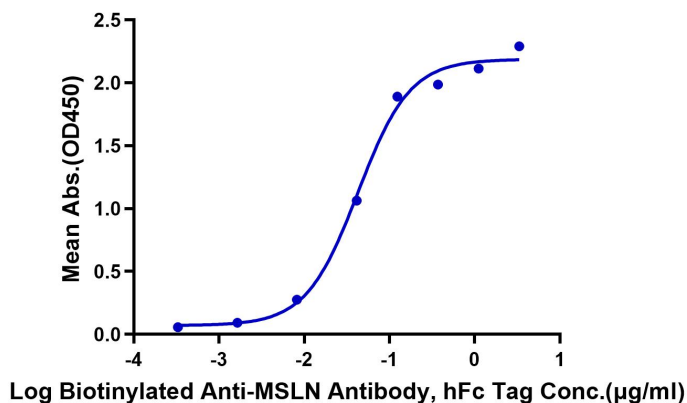
0.1µg Human CA125, His Tag Per Well



Immobilized Human CA125, His Tag at 1µg/ml (100µl/well) on the plate. Dose response curve for Human MSLN, hFc Tag with the EC50 of 7.8ng/ml determined by ELISA (QC Test).

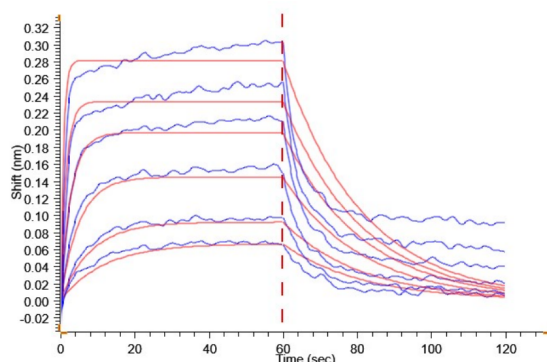
Human MSLN, hFc Tag ELISA

0.05µg Human MSLN, hFc Tag Per Well



Immobilized Human MSLN at 0.5µg/ml (100µl/well) on the plate. Dose response curve for Biotinylated Anti-MSLN Antibody, hFc Tag with the EC50 of 44.2ng/ml determined by ELISA.

BLI Data



Loaded Human CA125, His-Avi Tag on Anti-His-Biosensor can bind Human MSLN, hFc Tag with an affinity constant of 31.00 nM as determined in BLI assay .