

FITC-Labeled Human MSLN/Mesothelin Protein

Cat. No. MSL-HM280F

Description

Source	Recombinant FITC-Labeled Human MSLN/Mesothelin Protein is expressed from HEK293 with hFc tag at the C-Terminus.
	It contains Glu296-Gly580.
Accession	Q13421-2
Molecular Weight	The protein has a predicted MW of 59 kDa. Due to glycosylation, the protein migrates to 68-75 kDa based on Bis-Tris PAGE result.
Wavelength	Excitation Wavelength: 490 nm
	Emission Wavelength: 520 nm
Endotoxin	Less than 1 EU per µg by the LAL method.
Purity	> 95% as determined by Bis-Tris PAGE
	> 95% as determined by HPLC

Formulation and Storage

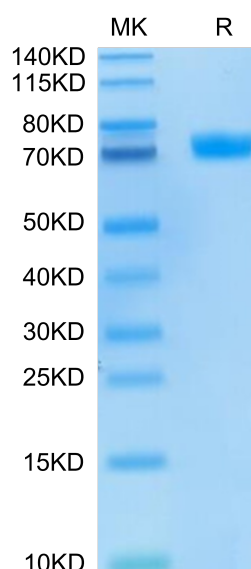
Formulation	Lyophilized from 0.22 µm filtered solution in PBS (pH 7.4). Normally 8% trehalose is added as protectant before lyophilization.
Reconstitution	Dissolve the lyophilized protein in distilled water. Please refer to the Certificate of Analysis for detailed instructions.
Storage	-20 to -80°C for 12 months as supplied from date of receipt. -80°C for 3 months after reconstitution. Recommend to aliquot the protein into smaller quantities for optimal storage. Please minimize freeze-thaw cycles.

Background

Mesothelin, also known as MSLN, is a protein that in humans is encoded by the MSLN gene. Cloning studies showed that the mesothelin gene encodes a precursor protein that is processed to yield mesothelin which is attached to the cell membrane by a glycosphosphatidylinositol linkage and a 31-kDa shed fragment named megakaryocyte-potentiating factor (MPF). Although it has been proposed that mesothelin may be involved in cell adhesion, its biological function is not known. A knockout mouse line that lacks mesothelin reproduces and develops normally.

Assay Data

Bis-Tris PAGE



FITC-Labeled Human MSLN on Bis-Tris PAGE under reduced condition. The purity is greater than 95%.

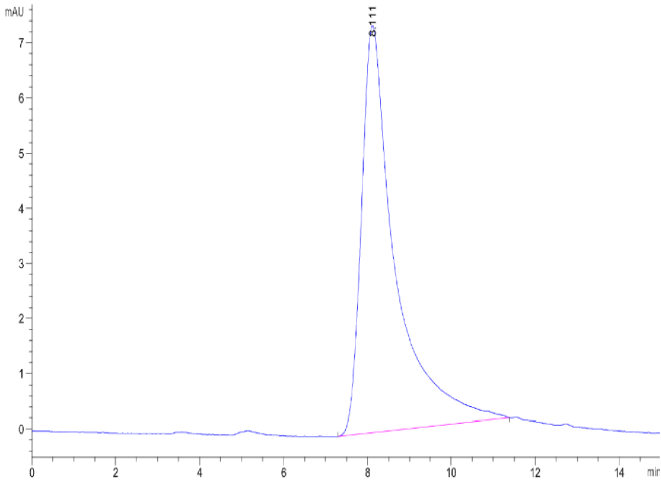
SEC-HPLC

FITC-Labeled Human MSLN/Mesothelin Protein

Cat. No. MSL-HM280F



Assay Data

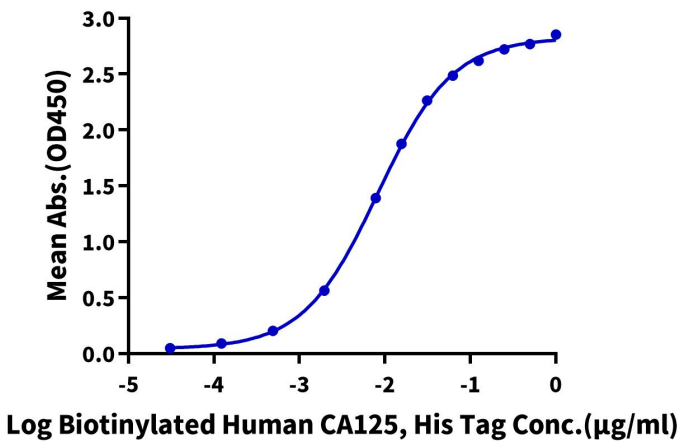


The purity of FITC-Labeled Human MSLN is greater than 95% as determined by SEC-HPLC.

ELISA Data

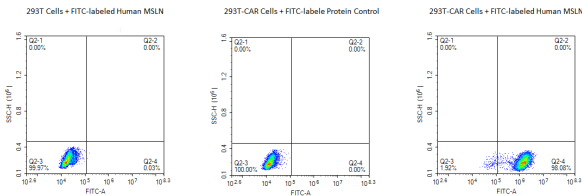
FITC-Labeled Human MSLN, hFc Tag ELISA

0.1µg FITC-Labeled Human MSLN, hFc Tag Per Well



Immobilized FITC-Labeled Human MSLN, hFc Tag at 1µg/ml (100µl/well) on the plate. Dose response curve for Biotinylated Human CA125, His Tag with the EC50 of 7.9ng/ml determined by ELISA (QC Test).

FACS Data



FACS Analysis of Anti-MSLN CAR Expression. 293T cells were transfected with anti-MSLN-scFv and Fc tag. Cells were stained with 5µg/ml FITC-Labeled Human MSLN (296-580) , Fc Tag and FITC-labeled protein control. Non-transfected 293T cells and FITC-labeled protein control were used as negative control.