

Biotinylated Mouse MSLN/Mesothelin Protein (Primary Amine Labeling), Ultra Low Endotoxin



Cat. No. MSL-MM180B-UL

Description	
Source	Recombinant Biotinylated Mouse MSLN/Mesothelin Protein (Primary Amine Labeling) is expressed from HEK293 with His tag at the C-Terminus. It contains Asp298-Ser600.
Accession	Q61468-1
Molecular Weight	The protein has a predicted MW of 35.2 kDa. Due to glycosylation, the protein migrates to 45-60 kDa based on Bis-Tris PAGE result.
Endotoxin	Less than 0.01 EU per μg by the LAL method.
Purity	> 95% as determined by Bis-Tris PAGE > 90% as determined by HPLC

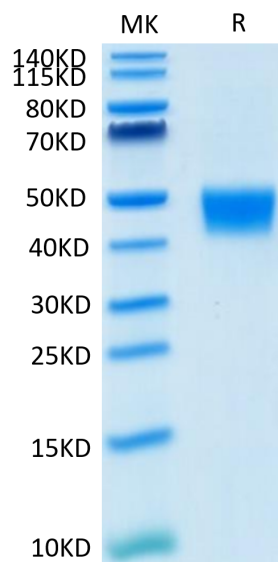
Formulation and Storage	
Formulation	Lyophilized from 0.22 μm filtered solution in PBS (pH 7.4). Normally 8% trehalose is added as protectant before lyophilization.
Reconstitution	Dissolve the lyophilized protein in distilled water. Please refer to the Certificate of Analysis for detailed instructions.
Storage	-20 to -80°C for 12 months as supplied from date of receipt. -80°C for 3 months after reconstitution. Recommend to aliquot the protein into smaller quantities for optimal storage. Please minimize freeze-thaw cycles.

Background

Mesothelin, also known as MSLN, is a protein that in humans is encoded by the MSLN gene. Cloning studies showed that the mesothelin gene encodes a precursor protein that is processed to yield mesothelin which is attached to the cell membrane by a glycoposphatidylinositol linkage and a 31-kDa shed fragment named megakaryocyte-potentiating factor (MPF). Although it has been proposed that mesothelin may be involved in cell adhesion, its biological function is not known. A knockout mouse line that lacks mesothelin reproduces and develops normally.

Assay Data

Bis-Tris PAGE



Biotinylated Mouse MSLN on Bis-Tris PAGE under reduced condition. The purity is greater than 95%.

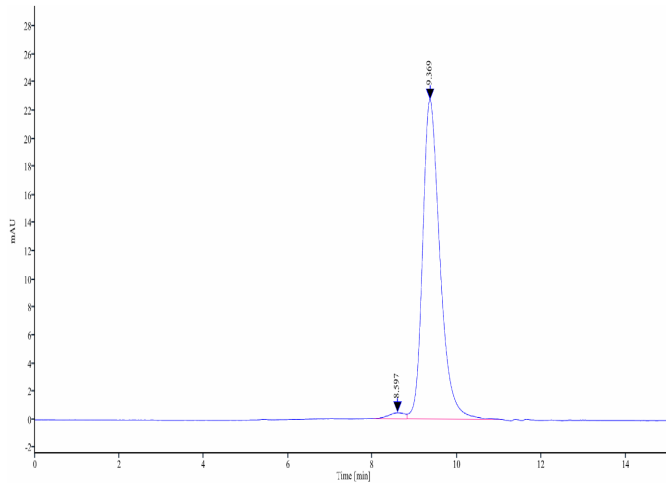
SEC-HPLC

Biotinylated Mouse MSLN/Mesothelin Protein (Primary Amine Labeling), Ultra Low Endotoxin



Cat. No. MSL-MM180B-UL

Assay Data

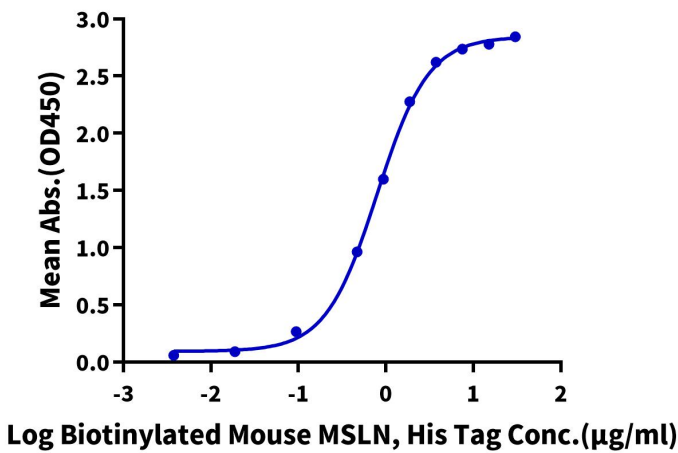


The purity of Biotinylated Mouse MSLN is greater than 90% as determined by SEC-HPLC.

ELISA Data

Biotinylated Mouse MSLN, His Tag ELISA

0.5µg Human CA125, His Tag Per Well



Immobilized Human CA125, His Tag at 5µg/ml (100µl/well) on the plate. Dose response curve for Biotinylated Mouse MSLN, His Tag with the EC50 of 0.79µg/ml determined by ELISA (QC Test).