

Rat MSLN/Mesothelin Protein

Cat. No. MSL-RM180

Description

Source	Recombinant Rat MSLN/Mesothelin Protein is expressed from HEK293 with His tag at the C-terminus. It contains Asp298-Ser600.
Accession	XP_032768340.1
Molecular Weight	The protein has a predicted MW of 35.67 kDa. Due to glycosylation, the protein migrates to 45-55 kDa based on Tris-Bis PAGE result.
Endotoxin	Less than 1EU per µg by the LAL method.
Purity	> 95% as determined by Tris-Bis PAGE > 95% as determined by HPLC

Formulation and Storage

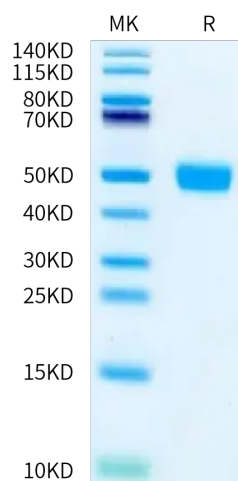
Formulation	Supplied as 0.22 µm filtered solution in PBS (pH 7.4).
Storage	Valid for 12 months from date of receipt when stored at -80°C. Recommend to aliquot the protein into smaller quantities for optimal storage. Please minimize freeze-thaw cycles.

Background

Mesothelin, also known as MSLN, is a protein that in humans is encoded by the MSLN gene. Cloning studies showed that the mesothelin gene encodes a precursor protein that is processed to yield mesothelin which is attached to the cell membrane by a glycoposphatidylinositol linkage and a 31-kDa shed fragment named megakaryocyte-potentiating factor (MPF).

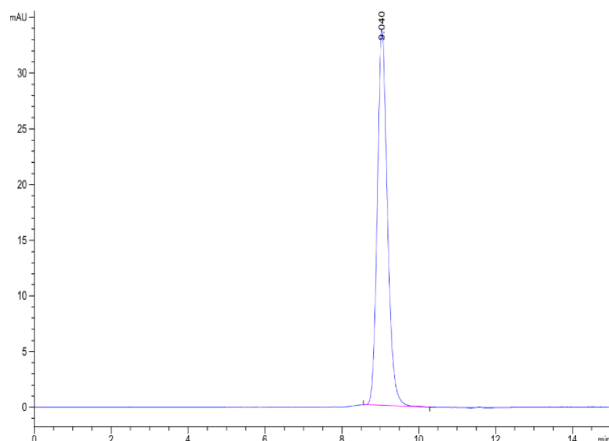
Assay Data

Tris-Bis PAGE



Rat MSLN on Tris-Bis PAGE under reduced condition. The purity is greater than 95%.

SEC-HPLC



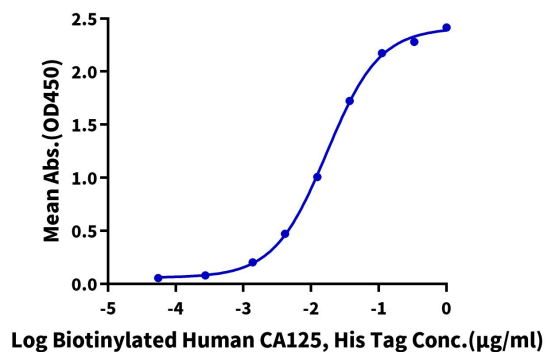
The purity of Rat MSLN is greater than 95% as determined by SEC-HPLC.

Assay Data

ELISA Data

Rat MSLN, His Tag ELISA

0.1µg Rat MSLN, His Tag Per Well



Immobilized Rat MSLN, His Tag at 1µg/ml (100µl/well) on the plate. Dose response curve for Biotinylated Human CA125, His Tag with the EC50 of 17.1ng/ml determined by ELISA.