

# Human NGAL/Lipocalin-2 Protein

Cat. No. NGL-HM102

## Description

<b>Source</b>	Recombinant Human NGAL/Lipocalin-2 Protein is expressed from HEK293 with His tag at the C-Terminus. It contains Gln21-Gly198.
<b>Accession</b>	P80188-1
<b>Molecular Weight</b>	The protein has a predicted MW of 21.64 kDa. Due to glycosylation, the protein migrates to 25-30 kDa based on Bis-Tris PAGE result.
<b>Endotoxin</b>	Less than 1EU per µg by the LAL method.
<b>Purity</b>	> 95% as determined by Bis-Tris PAGE > 95% as determined by HPLC

## Formulation and Storage

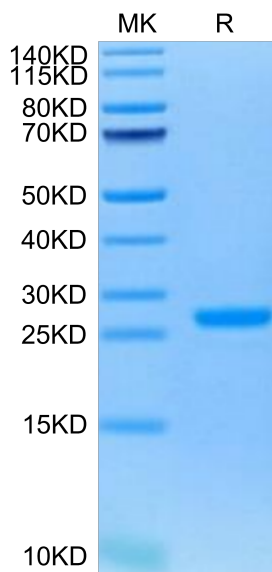
<b>Formulation</b>	Supplied as 0.22µm filtered solution in PBS (pH 7.4).
<b>Storage</b>	Valid for 12 months from date of receipt when stored at -80°C. Recommend to aliquot the protein into smaller quantities for optimal storage. Please minimize freeze-thaw cycles.

## Background

Acute kidney injury (AKI) is one of the most common complications of various serious conditions, and early diagnosis is therefore critical for the treatment of AKI. Recent evidence demonstrates that neutrophil gelatinase-associated lipocalin (NGAL) is closely associated with AKI. Several experimental and clinical studies have shown that the expression of urine and serum NGAL increases significantly in AKI. NGAL shows potential to be a new effective early biochemical marker of AKI. Further studies are needed to confirm the significant advantages of NGAL in the diagnosis of early AKI and its value in clinical applications.

## Assay Data

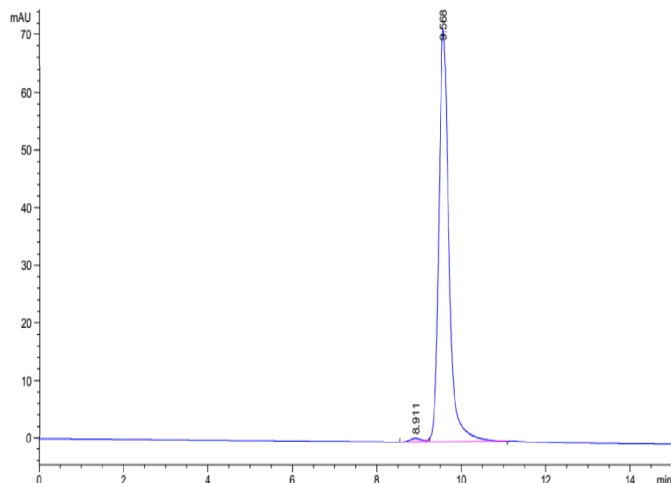
### Bis-Tris PAGE



Human NGAL on Bis-Tris PAGE under reduced condition. The purity is greater than 95%.

### SEC-HPLC

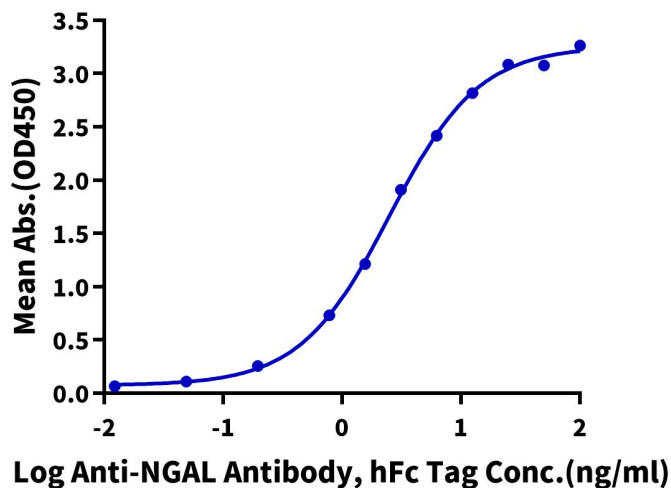
Assay Data



The purity of Human NGAL is greater than 95% as determined by SEC-HPLC.

ELISA Data

**Human NGAL, His Tag ELISA**  
0.1 µg Human NGAL, His Tag Per Well



Immobilized Human NGAL, His Tag at 1 µg/ml (100 µl/Well) on the plate. Dose response curve for Anti-NGAL Antibody, hFc Tag with the EC50 of 2.5 ng/ml determined by ELISA (QC Test).