

# Human NKp46/NCR1/CD335 Protein

Cat. No. NKP-HM346

## Description

<b>Source</b>	Recombinant Human NKp46/NCR1/CD335 Protein is expressed from HEK293 with mFc (IgG1) tag at the C-Terminus. It contains Gln22-Asn255.
<b>Accession</b>	O76036-1
<b>Molecular Weight</b>	The protein has a predicted MW of 52.9 kDa. Due to glycosylation, the protein migrates to 65-75 kDa based on Tris-Bis PAGE result.
<b>Endotoxin</b>	Less than 1EU per µg by the LAL method.
<b>Purity</b>	> 95% as determined by Tris-Bis PAGE > 95% as determined by HPLC

## Formulation and Storage

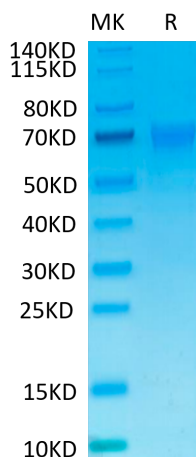
<b>Formulation</b>	Lyophilized from 0.22µm filtered solution in PBS (pH 7.4). Normally 8% trehalose is added as protectant before lyophilization.
<b>Reconstitution</b>	Centrifuge the tube before opening. Reconstituting to a concentration more than 100 µg/ml is recommended. Dissolve the lyophilized protein in distilled water.
<b>Storage</b>	-20 to -80°C for 12 months as supplied from date of receipt. -20 to -80°C for 3-6 months in unopened state after reconstitution. 2-8°C for 2-7 days after reconstitution. Recommend to aliquot the protein into smaller quantities for optimal storage. Please minimize freeze-thaw cycles.

## Background

NKp46, along with NKp30 and NKp44, are activating receptors that have been collectively termed the natural cytotoxicity receptors (NCR). These receptors lack significant sequence homology to one another. They are expressed almost exclusively by NK cells and play a major role in triggering some of the key lytic activities of NK cells.

## Assay Data

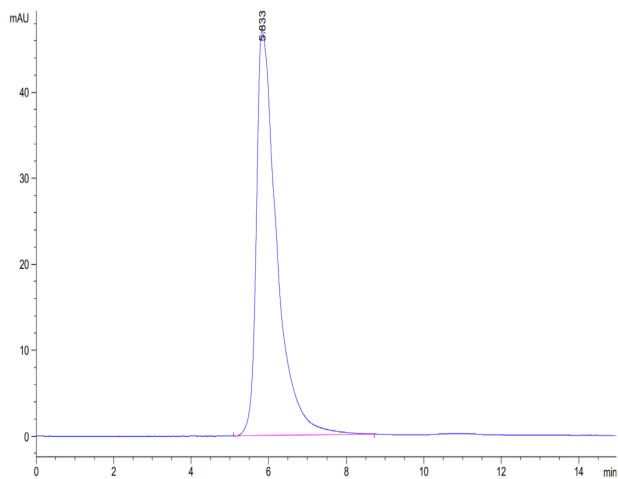
### Tris-Bis PAGE



Human NKp46 on Tris-Bis PAGE under reduced condition. The purity is greater than 95%.

### SEC-HPLC

Assay Data



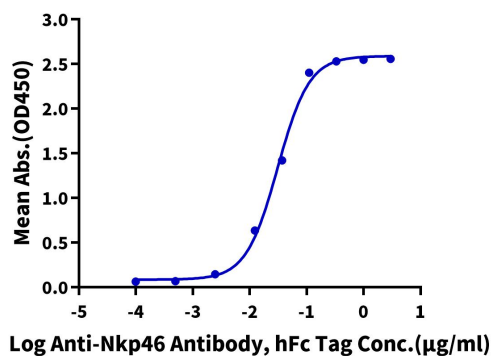
The purity of Human NKp46 is greater than 95% as determined by SEC-HPLC.

Assay Data

ELISA Data

**Human NKp46, mFc Tag ELISA**

0.05µg Human NKp46, mFc Tag Per Well



Immobilized Human NKp46, mFc Tag at 0.5µg/ml (100µl/well) on the plate. Dose response curve for Anti-Nkp46 Antibody, hFc Tag with the EC50 of 30.9ng/ml determined by ELISA.