

Human Notch 3 Protein

Cat. No. NOT-HM103



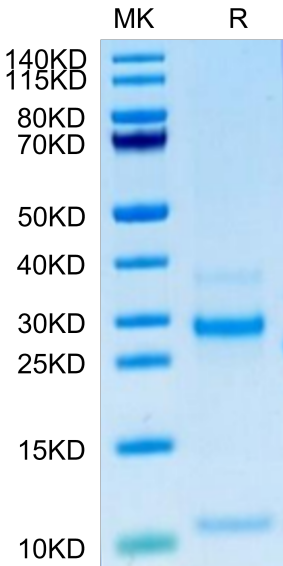
Description	
Source	Recombinant Human Notch 3 Protein is expressed from HEK293 with His tag at the C-Terminus. It contains Ala1378-Ser1640.
Accession	Q9UM47
Molecular Weight	The protein has a predicted MW of 30.18 kDa. Due to furin-like protease cleavage and glycosylation, the protein migrates to 27-30 kDa and 10-12 kDa based on Bis-Tris PAGE result.
Endotoxin	Less than 1 EU per µg by the LAL method.
Purity	> 95% as determined by Bis-Tris PAGE > 95% as determined by HPLC

Formulation and Storage	
Formulation	Lyophilized from 0.22µm filtered solution in PBS (pH 7.4). Normally 8% trehalose is added as protectant before lyophilization.
Reconstitution	Dissolve the lyophilized protein in distilled water. Please refer to the Certificate of Analysis for detailed instructions.
Storage	-20 to -80°C for 12 months as supplied from date of receipt. -80°C for 3 months after reconstitution. Recommend to aliquot the protein into smaller quantities for optimal storage. Please minimize freeze-thaw cycles.

Background	
Human Notch-3 is part of the Notch family of type I transmembrane glycoproteins involved in a number of early-event developmental processes. The extracellular domain of Notch receptors interact with the extracellular domain of transmembrane ligands Jagged, Delta, and Serrate expressed on the surface of a neighboring cell. Upon ligand activation through the released notch intracellular domain (NICD) it forms a transcriptional activator complex with RBPJ/RBPSUH and activates genes of the enhancer of split locus. Affects the implementation of differentiation, proliferation and apoptotic programs.	

Assay Data

Bis-Tris PAGE



Human Notch 3 on Bis-Tris PAGE under reduced condition. The purity is greater than 95%.

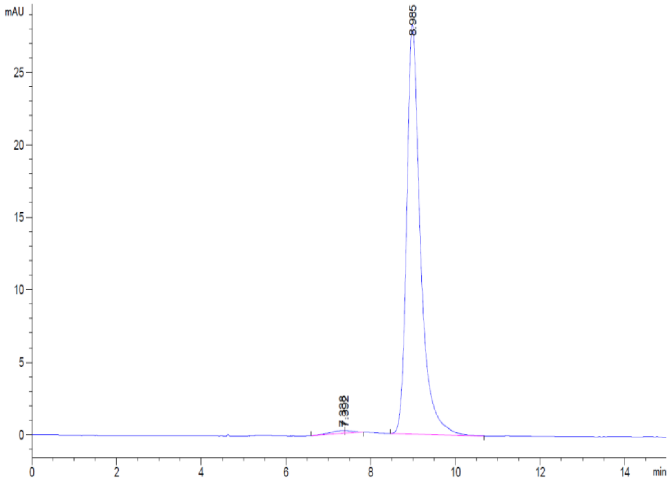
SEC-HPLC

Human Notch 3 Protein

Cat. No. NOT-HM103



Assay Data

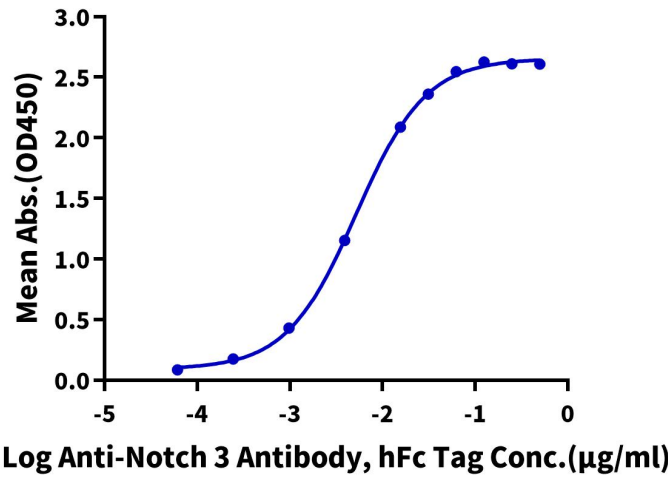


The purity of Human Notch 3 is greater than 95% as determined by SEC-HPLC.

ELISA Data

Human Notch 3, His Tag ELISA

0.2µg Human Notch 3, His Tag Per Well



Immobilized Human Notch 3, His Tag at 2µg/ml (100µl/Well) on the plate. Dose response curve for Anti-Notch 3 Antibody, hFc Tag with the EC50 of 5.2ng/ml determined by ELISA (QC Test).