

Human IL-12B/p40/NKSF2 Protein, Ultra Low Endotoxin



Cat. No. P40-HM112-UL

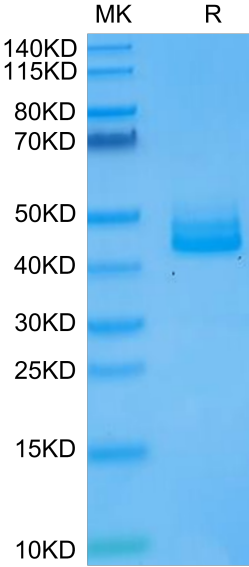
Description	
Source	Recombinant Human IL-12B/p40/NKSF2 Protein is expressed from HEK293 with His tag at the C-Terminus. It contains Ile23-Ser328.
Accession	P29460
Molecular Weight	The protein has a predicted MW of 35.8 kDa. Due to glycosylation, the protein migrates to 40-50 kDa based on Bis-Tris PAGE result.
Endotoxin	Less than 0.01 EU per µg by the LAL method.
Purity	> 95% as determined by Bis-Tris PAGE

Formulation and Storage	
Formulation	Lyophilized from 0.22µm filtered solution in PBS (pH 7.4). Normally 8% trehalose is added as protectant before lyophilization.
Reconstitution	Dissolve the lyophilized protein in distilled water. Please refer to the Certificate of Analysis for detailed instructions.
Storage	-20 to -80°C for 12 months as supplied from date of receipt.-80°C for 3 months after reconstitution.Recommend to aliquot the protein into smaller quantities for optimal storage. Please minimize freeze-thaw cycles.

Background	
Interleukin (IL)12B, which encodes the p40 subunit common to IL12 and IL23, as one of the genes for which expression in fibroblastlike synoviocytes from patients with rheumatoid arthritis (RAFLS) is induced by DcR3.Decoy receptor 3 (DcR3) competitively binds to three ligands, Fas ligand, lymphotoxinrelated inducible ligand that competes for glycoprotein D binding to herpesvirus entry mediator on T cells and tumor necrosis factorlike ligand 1A (TL1A), to prevent their effects. Recent studies have suggested that DcR3 directly affects cells as a ligand.	

Assay Data

Bis-Tris PAGE



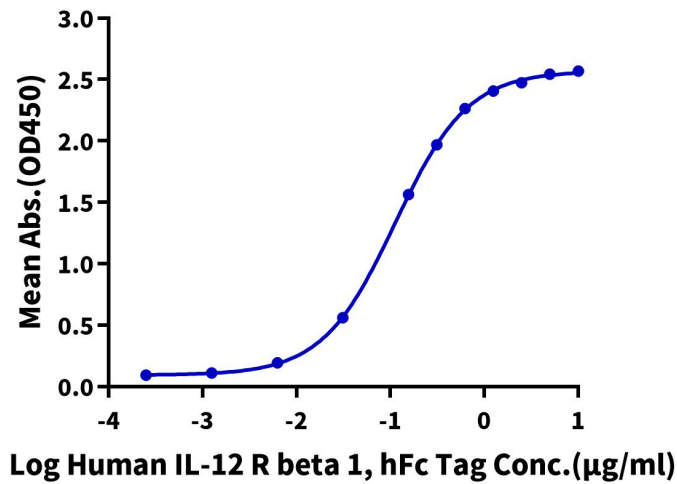
Human IL-12B on Bis-Tris PAGE under reduced condition. The purity is greater than 95%.

ELISA Data

Assay Data

Human IL-12B, His Tag ELISA

0.5µg Human IL-12B, His Tag Per Well

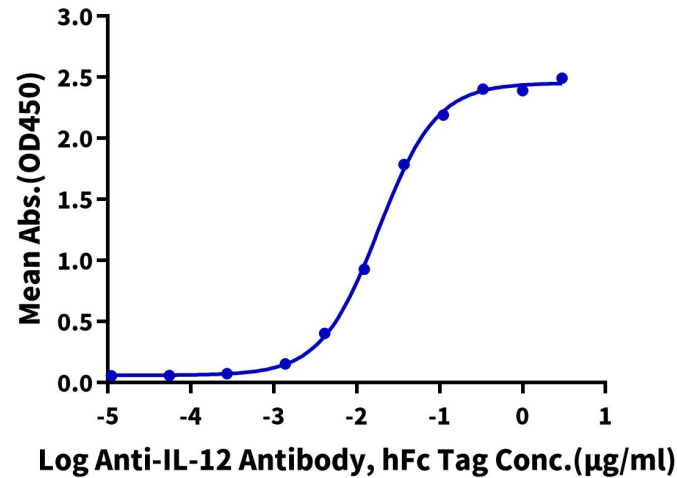


Immobilized Human IL-12B, His Tag at 5µg/ml (100µl/well) on the plate. Dose response curve for Human IL-12 R beta 1, hFc Tag with the EC50 of 0.11µg/ml determined by ELISA (QC Test).

ELISA Data

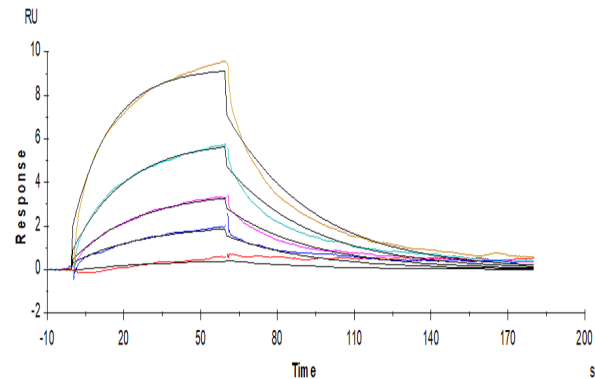
Human IL-12B, His Tag ELISA

0.1µg Human IL-12B, His Tag Per Well



Immobilized Human IL-12B, His Tag at 1µg/ml (100µl/Well) on the plate. Dose response curve for Anti-IL-12 Antibody, hFc Tag with the EC50 of 18.5ng/ml determined by ELISA.

SPR Data



Human IL-12B, His Tag immobilized on CM5 Chip can bind Human IL-12 R beta 1, His Tag with an affinity constant of 98.1nM as determined in a SPR assay (Biacore T200).