

Cynomolgus PD-1/PDCD1 Protein, Ultra Low Endotoxin



Cat. No. PD1-CM101-UL

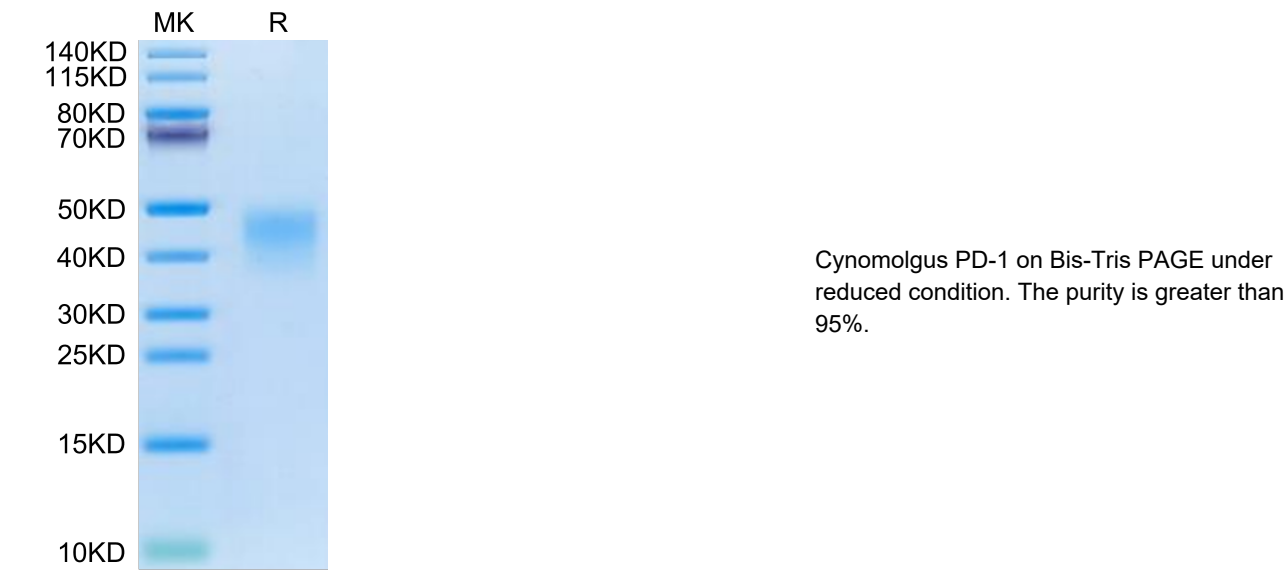
Description	
Source	Recombinant Cynomolgus PD-1/PDCD1 Protein is expressed from HEK293 with His tag at the C-Terminus. It contains Pro21-Gln167.
Accession	B0LAJ3
Molecular Weight	The protein has a predicted MW of 17.53 kDa. Due to glycosylation, the protein migrates to 40-50 kDa based on Bis-Tris PAGE result.
Endotoxin	Less than 0.001 EU per µg by the LAL method.
Purity	> 95% as determined by Bis-Tris PAGE > 95% as determined by HPLC

Formulation and Storage	
Formulation	Lyophilized from 0.22µm filtered solution in PBS (pH 7.4). Normally 8% trehalose is added as protectant before lyophilization.
Reconstitution	Dissolve the lyophilized protein in distilled water. Please refer to the Certificate of Analysis for detailed instructions.
Storage	-20 to -80°C for 12 months as supplied from date of receipt.-80°C for 3 months after reconstitution.Recommend to aliquot the protein into smaller quantities for optimal storage. Please minimize freeze-thaw cycles.

Background	
Programmed cell death protein 1, also known as PD-1 and CD279 , is a protein found on the surface of cells that has a role in regulating the immune system's response to the cells of the human body by down-regulating the immune system and promoting self tolerance by suppressing T cell inflammatory activity.	

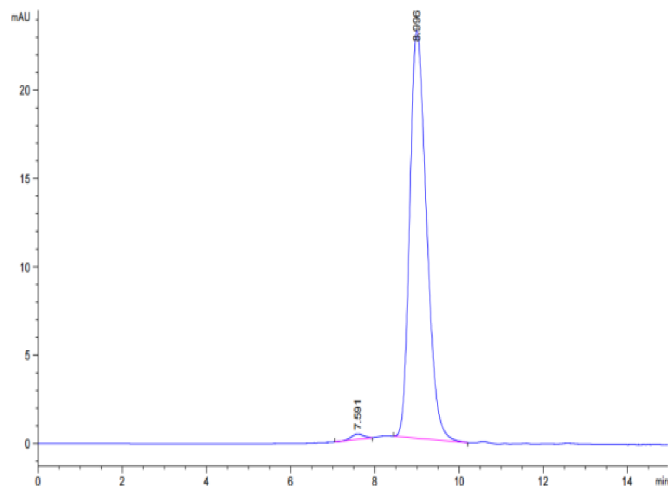
Assay Data

Bis-Tris PAGE



SEC-HPLC

Assay Data

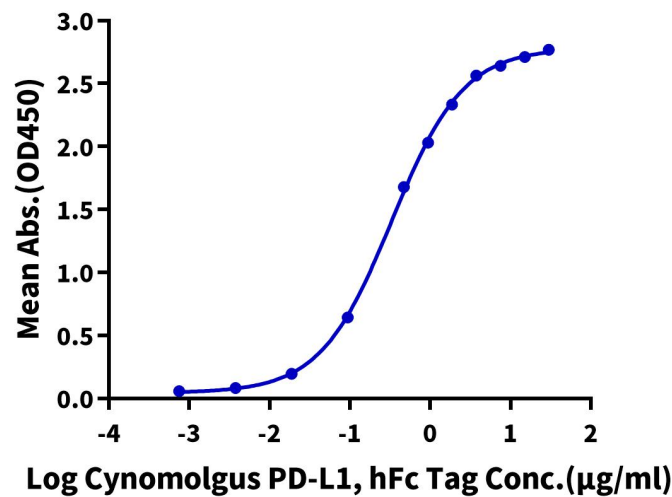


The purity of Cynomolgus PD-1 is greater than 95% as determined by SEC-HPLC.

ELISA Data

Cynomolgus PD-1, His Tag ELISA

0.2µg Cynomolgus PD-1, His Tag Per Well



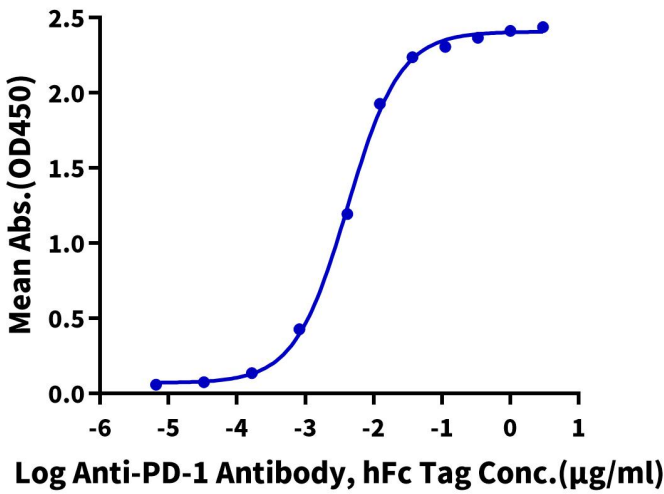
Immobilized Cynomolgus PD-1, His Tag at 2µg/ml (100µl/well) on the plate. Dose response curve for Cynomolgus PD-L1, hFc Tag with the EC50 of 0.33µg/ml determined by ELISA.

ELISA Data

Assay Data

Cynomolgus PD-1, His Tag ELISA

0.2µg Cynomolgus PD-1, His Tag Per Well



Immobilized Cynomolgus PD-1, His Tag at 2µg/ml (100µl/well) on the plate. Dose response curve for Anti-PD-1 Antibody, hFc Tag with the EC50 of 4.1ng/ml determined by ELISA.