

# Cynomolgus PD-1/PDCD1 Protein

Cat. No. PD1-CM201



## Description

<b>Source</b>	Recombinant Cynomolgus PD-1/PDCD1 Protein is expressed from HEK293 with hFc tag at the C-Terminus. It contains Pro21-Gln167.
<b>Accession</b>	B0LAJ3
<b>Molecular Weight</b>	The protein has a predicted MW of 42.4 kDa. Due to glycosylation, the protein migrates to 55-70 kDa based on Bis-Tris PAGE result.
<b>Endotoxin</b>	Less than 1EU per µg by the LAL method.
<b>Purity</b>	> 95% as determined by Bis-Tris PAGE > 95% as determined by HPLC

## Formulation and Storage

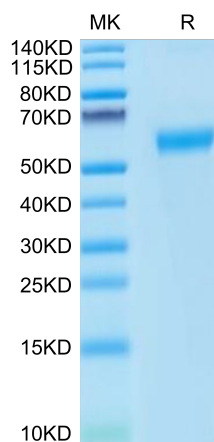
<b>Formulation</b>	Lyophilized from 0.22µm filtered solution in PBS (pH 7.4). Normally 8% trehalose is added as protectant before lyophilization.
<b>Reconstitution</b>	Centrifuge the tube before opening. Reconstituting to a concentration more than 100 µg/ml is recommended. Dissolve the lyophilized protein in distilled water.
<b>Storage</b>	-20 to -80°C for 12 months as supplied from date of receipt. -80°C for 3 months after reconstitution. Recommend to aliquot the protein into smaller quantities for optimal storage. Please minimize freeze-thaw cycles.

## Background

Programmed cell death protein 1, also known as PD-1 and CD279, is a protein found on the surface of cells that has a role in regulating the immune system's response to the cells of the human body by down-regulating the immune system and promoting self tolerance by suppressing T cell inflammatory activity.

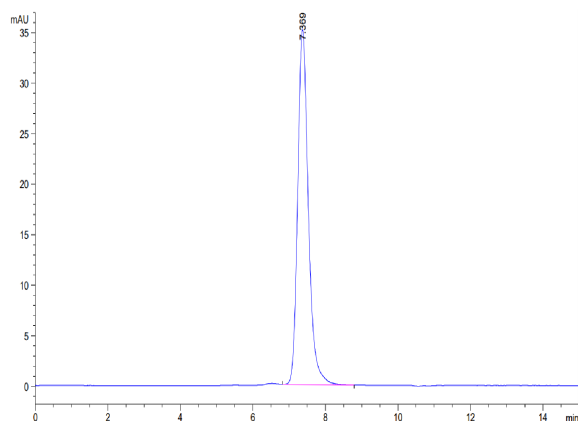
## Assay Data

### Bis-Tris PAGE



Cynomolgus PD-1 on Bis-Tris PAGE under reduced conditions. The purity is greater than 95%.

### SEC-HPLC



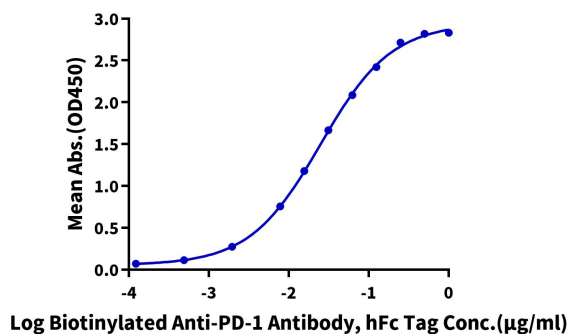
The purity of Cynomolgus PD-1 is greater than 95% as determined by SEC-HPLC.

Assay Data

ELISA Data

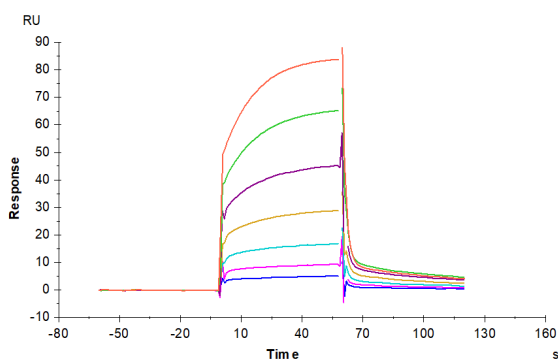
**Cynomolgus PD-1, hFc Tag ELISA**

0.2µg Cynomolgus PD-1, hFc Tag Per Well



Immobilized Cynomolgus PD-1, hFc Tag at 2µg/ml (100µl/well) on the plate. Dose response curve for Biotinylated Anti-PD1 Antibody, hFc Tag with the EC50 of 25.0ng/ml determined by ELISA (QC Test).

SPR Data



Cynomolgus PD-1, hFc Tag captured on CM5 Chip via Protein A can bind Cynomolgus PD-L1, His Tag with an affinity constant of 1.28 µM as determined in SPR assay (Biacore T200).