

# Biotinylated Human PD-1/PDCD1 Protein

Cat. No. PD1-HM501B

## Description

<b>Source</b>	Recombinant Biotinylated Human PD-1/PDCD1 Protein is expressed from Expi293 with hFc tag and Avi tag at the C-terminal. It contains Leu25-Gln167.
<b>Accession</b>	Q15116-1
<b>Molecular Weight</b>	The protein has a predicted MW of 44.7 kDa. Due to glycosylation, the protein migrates to 65-72 kDa based on Tris-Bis PAGE result.
<b>Endotoxin</b>	Less than 1EU per µg by the LAL method.
<b>Purity</b>	> 95% as determined by Tris-Bis PAGE > 95% as determined by HPLC

## Formulation and Storage

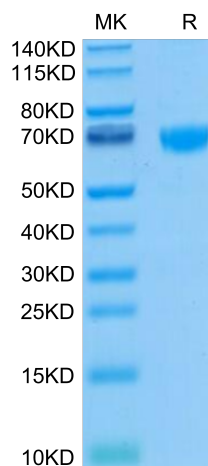
<b>Formulation</b>	Lyophilized from 0.22µm filtered solution in PBS (pH 7.4). Normally 5% trehalose is added as protectant before lyophilization.
<b>Reconstitution</b>	Centrifuge tubes before opening. Reconstituting to a concentration more than 100 µg/ml is recommended. Dissolve the lyophilized protein in distilled water.
<b>Storage</b>	-20 to -80°C for 12 months as supplied from date of receipt. -20 to -80°C for 3-6 months in unopened state after reconstitution. 2-8°C for 2-7 days after reconstitution. Recommend to aliquot the protein into smaller quantities for optimal storage. Please avoid freeze-thaw cycles.

## Background

Programmed cell death protein 1, also known as PD-1 and CD279, is a protein found on the surface of cells that has a role in regulating the immune system's response to the cells of the human body by down-regulating the immune system and promoting self tolerance by suppressing T cell inflammatory activity.

## Assay Data

### Tris-Bis PAGE



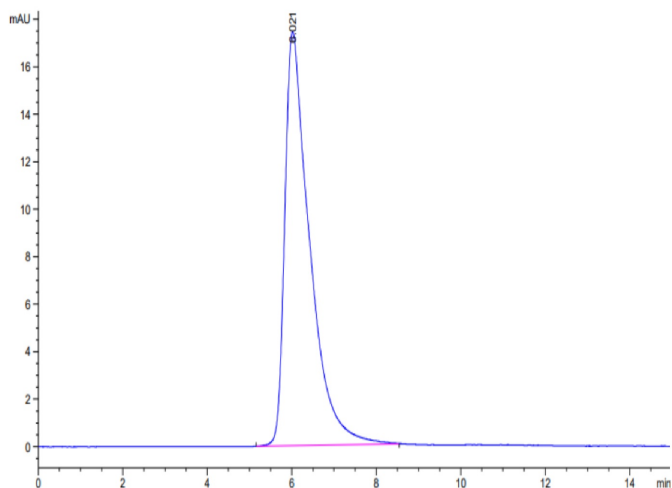
Biotinylated Human PD-1 on Tris-Bis PAGE under reduced. The purity is greater than 95%.

### SEC-HPLC

# Biotinylated Human PD-1/PDCD1 Protein

Cat. No. PD1-HM501B

## Assay Data

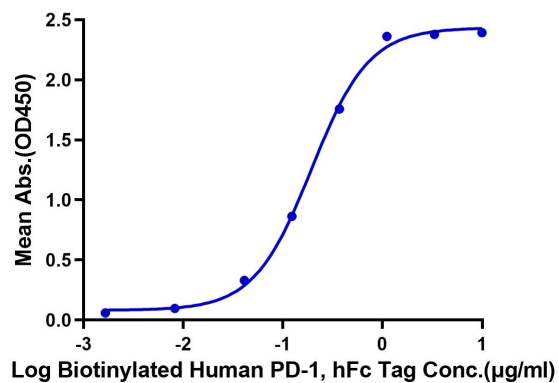


The purity of Biotinylated Human PD-1 is greater than 95% as determined by SEC-HPLC.

## ELISA Data

### Biotinylated Human PD-1, hFc Tag ELISA

0.2 $\mu$ g Human PD-L1, mFc Tag Per Well



Immobilized Human PD-L1, mFc tag at 2 $\mu$ g/ml (100 $\mu$ l/Well). Dose response curve for Biotinylated Human PD-1, hFc tag with the EC50 of 0.19 $\mu$ g/ml determined by ELISA.