

Biotinylated Cynomolgus/Rhesus macaque PD-L1/B7-H1 Protein (Primary Amine Labeling)



Cat. No. PDL-CM110B

Description

Source	Recombinant Biotinylated Cynomolgus/Rhesus macaque PD-L1/B7-H1 Protein (Primary Amine Labeling) is expressed from HEK293 with His tag at the C-Terminus. It contains Phe19-Arg238.
Accession	G7PSE7
Molecular Weight	The protein has a predicted MW of 26 kDa. Due to glycosylation, the protein migrates to 35-40 kDa based on Bis-Tris PAGE result.
Endotoxin	Less than 0.1 EU per µg by the LAL method.
Purity	> 95% as determined by Bis-Tris PAGE > 95% as determined by HPLC

Formulation and Storage

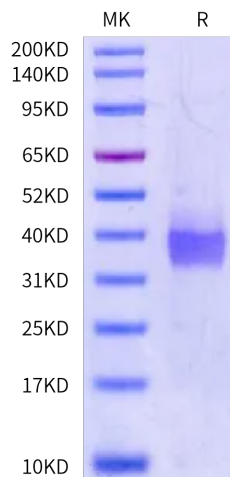
Formulation	Lyophilized from 0.22 µm filtered solution in PBS (pH 7.4). Normally 8% trehalose is added as protectant before lyophilization.
Reconstitution	Dissolve the lyophilized protein in distilled water. Please refer to the Certificate of Analysis for detailed instructions.
Storage	-20 to -80°C for 12 months as supplied from date of receipt. -80°C for 3 months after reconstitution. Recommend to aliquot the protein into smaller quantities for optimal storage. Please minimize freeze-thaw cycles.

Background

B7-H1, also known as PD-L1 and CD274, is an approximately 65 kDa transmembrane glycoprotein in the B7 family of immune regulatory molecules. PD-L1 has been identified as the ligand for the immunoinhibitory receptor programmed death-1 (PD1/PDCD1) and has been demonstrated to play a role in the regulation of immune responses and peripheral tolerance.

Assay Data

Bis-Tris PAGE



Biotinylated Cynomolgus/Rhesus macaque PD-L1 on Bis-Tris PAGE under reduced conditions. The purity is greater than 95%.

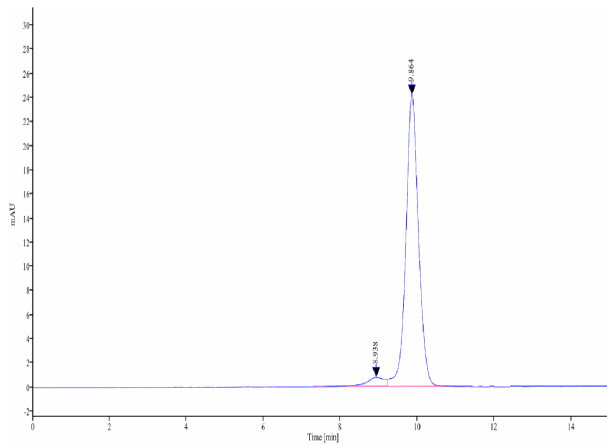
SEC-HPLC

Biotinylated Cynomolgus/Rhesus macaque PD-L1/B7-H1 Protein (Primary Amine Labeling)



Cat. No. PDL-CM110B

Assay Data



The purity of Biotinylated Cynomolgus/Rhesus macaque PD-L1 is greater than 95% as determined by SEC-HPLC.

Biotinylated Cynomolgus/Rhesus macaque PD-L1/B7-H1 Protein (Primary Amine Labeling)



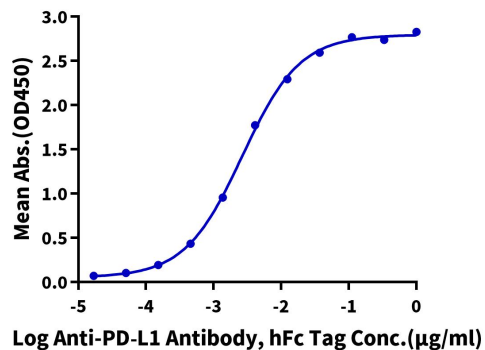
Cat. No. PDL-CM110B

Assay Data

ELISA Data

Biotinylated Cynomolgus/Rhesus macaque PD-L1, His Tag ELISA

0.05µg Biotinylated Cynomolgus/Rhesus macaque PD-L1, His Tag Per Well



Immobilized Biotinylated Cynomolgus/Rhesus macaque PD-L1, His Tag at 0.5µg/ml (100µl/well) on the streptavidin precoated plate (5µg/ml). Dose response curve for Anti-PD-L1 Antibody, hFc Tag with the EC50 of 2.7ng/ml determined by ELISA.