

Cynomolgus PD-L1/B7-H1 Protein

Cat. No. PDL-CM210



Description

| | |
|-------------------------|--|
| Source | Recombinant Cynomolgus PD-L1/B7-H1 Protein is expressed from HEK293 with hFc tag at the C-Terminus. It contains Phe19-Arg238. |
| Accession | G7PSE7 |
| Molecular Weight | The protein has a predicted MW of 52 kDa. Due to glycosylation, the protein migrates to 60-70 kDa based on Bis-Tris PAGE result. |
| Endotoxin | Less than 1EU per µg by the LAL method. |
| Purity | > 95% as determined by Bis-Tris PAGE > 95% as determined by HPLC |

Formulation and Storage

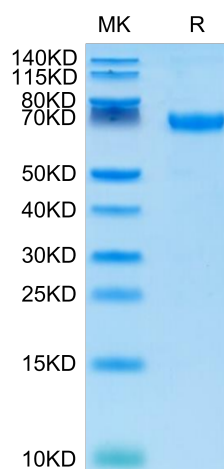
| | |
|-----------------------|---|
| Formulation | Lyophilized from 0.22µm filtered solution in PBS (pH 7.4). Normally 8% trehalose is added as protectant before lyophilization. |
| Reconstitution | Centrifuge the tube before opening. Reconstituting to a concentration more than 100 µg/ml is recommended. Dissolve the lyophilized protein in distilled water. |
| Storage | -20 to -80°C for 12 months as supplied from date of receipt. -80°C for 3 months after reconstitution. Recommend to aliquot the protein into smaller quantities for optimal storage. Please minimize freeze-thaw cycles. |

Background

B7-H1, also known as PD-L1 and CD274, is an approximately 65 kDa transmembrane glycoprotein in the B7 family of immune regulatory molecules. PD-L1 has been identified as the ligand for the immunoinhibitory receptor programmed death-1 (PD1/PDCD1) and has been demonstrated to play a role in the regulation of immune responses and peripheral tolerance.

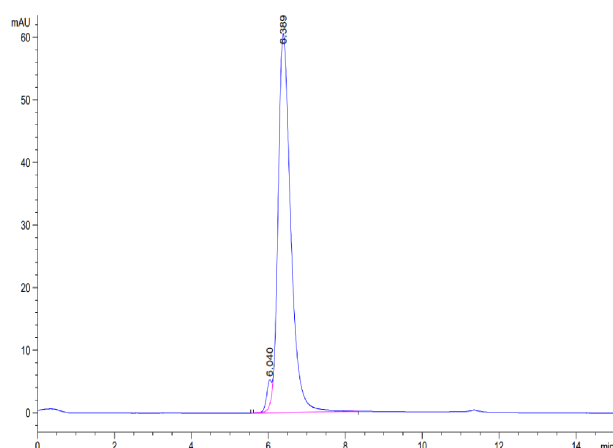
Assay Data

Bis-Tris PAGE



Cynomolgus PD-L1 on Bis-Tris PAGE under reduced conditions. The purity is greater than 95%.

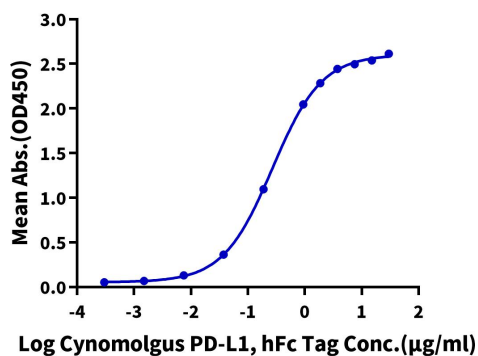
SEC-HPLC



The purity of Cynomolgus PD-L1 is greater than 95% as determined by SEC-HPLC.

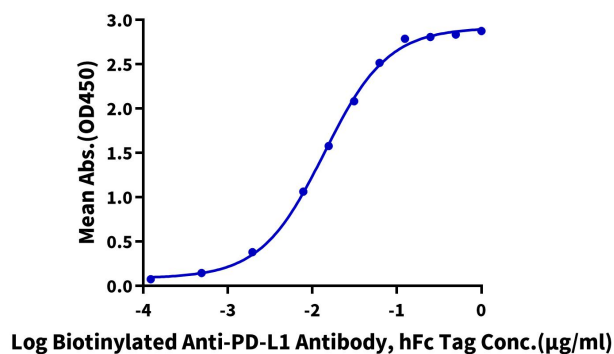
Assay Data

ELISA Data

Cynomolgus PD-L1, hFc Tag ELISA0.2 μ g Cynomolgus PD-1, His Tag Per Well

Immobilized Cynomolgus PD-1, His Tag at 2 μ g/ml (100 μ l/well) on the plate. Dose response curve for Cynomolgus PD-L1, hFc Tag with the EC50 of 0.27 μ g/ml determined by ELISA.

ELISA Data

Cynomolgus PD-L1, hFc Tag ELISA0.1 μ g Cynomolgus PD-L1, hFc Tag Per Well

Immobilized Cynomolgus PD-L1, hFc Tag at 1 μ g/ml (100 μ l/well) on the plate. Dose response curve for Biotinylated Anti-PD-L1 Antibody, hFc Tag with the EC50 of 13.8ng/ml determined by ELISA.