

Cat. No. PFR-HM40A-UL

| Description | |
|------------------|---|
| Source | Recombinant Human PDGF R alpha/PDGFRA is expressed from HEK293 with His tag and Avi tag at the C-Terminus. It contains Gln24-Glu524. |
| Accession | P16234 |
| Molecular Weight | The protein has a predicted MW of 59.2 kDa. Due to glycosylation, the protein migrates to 70-83 kDa based on Bis-Tris PAGE result. |
| Endotoxin | Less than 0.01 EU per µg by the LAL method. |
| Purity | > 95% as determined by Bis-Tris PAGE > 95% as determined by HPLC |

Formulation and Storage

| | |
|----------------|---|
| Formulation | Lyophilized from 0.22µm filtered solution in PBS (pH 7.4). Normally 8% trehalose is added as protectant before lyophilization. |
| Reconstitution | Dissolve the lyophilized protein in distilled water. Please refer to the Certificate of Analysis for detailed instructions. |
| Storage | -20 to -80°C for 12 months as supplied from date of receipt. -80°C for 3 months after reconstitution. Recommend to aliquot the protein into smaller quantities for optimal storage. Please minimize freeze-thaw cycles. |

Background

Platelet-derived growth factor is commonly known as a mitogen. Many research data suggest a role for PDGF-beta R in the mitogenic response of mesangial cells. There are four members of PDGF family known as PDGF-A chain, PDGF-B chain, PDGF-C chain and PDGF-D chain, which in active forms are dimers. As far as two receptors PDGF-alpha R and PDGF-beta R are known to bind PDGF.

Assay Data

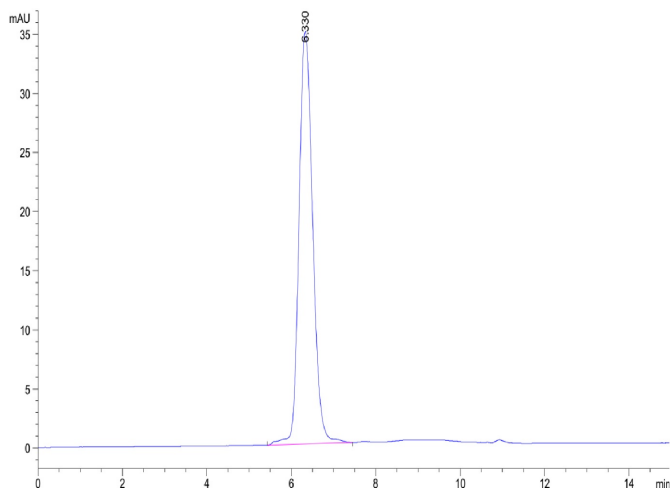
Bis-Tris PAGE



Human PDGF R alpha on Bis-Tris PAGE under reduced condition. The purity is greater than 95%.

SEC-HPLC

Assay Data

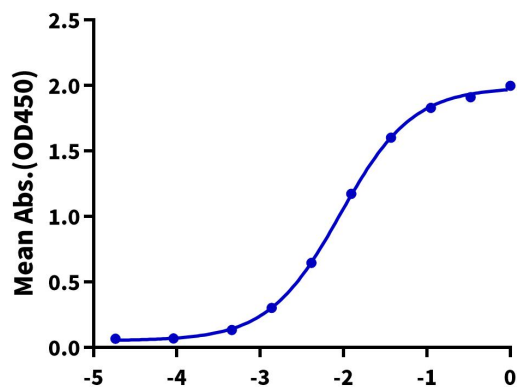


The purity of Human PDGF R alpha is greater than 95% as determined by SEC-HPLC.

ELISA Data

Human PDGF R alpha, His Tag ELISA

0.05µg Human PDGF R alpha, His Tag Per Well



Immobilized Human PDGF R alpha, His Tag at 0.5µg/ml (100µl/Well) on the plate. Dose response curve for Anti-PDGF R alpha Antibody, hFc Tag with the EC50 of 9.2ng/ml determined by ELISA.

Log Anti-PDGF R alpha Antibody, hFc Tag Conc.(µg/ml)