

# Human PGF Protein

Cat. No. PGF-HM201

## Description

<b>Source</b>	Recombinant Human PGF Protein is expressed from HEK293 with hFc tag at the C-Terminus. It contains Leu19-Arg221.
<b>Accession</b>	P49763-1
<b>Molecular Weight</b>	The protein has a predicted MW of 48.6 kDa. Due to glycosylation, the protein migrates to 60-70 kDa based on Bis-Tris PAGE result.
<b>Endotoxin</b>	Less than 1EU per $\mu\text{g}$ by the LAL method.
<b>Purity</b>	> 95% as determined by Bis-Tris PAGE > 95% as determined by HPLC

## Formulation and Storage

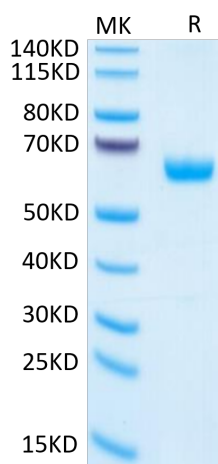
<b>Formulation</b>	Supplied as 0.22 $\mu\text{m}$ filtered solution in PBS (pH 7.4).
<b>Storage</b>	Valid for 12 months from date of receipt when stored at $-80^{\circ}\text{C}$ . Recommend to aliquot the protein into smaller quantities for optimal storage. Please minimize freeze-thaw cycles.

## Background

Placental growth factor (PGF) is another member of the VEGF family of cytokines with pro-angiogenic and pro-inflammatory effects. Retinal inhibition of PGF in combination with VEGF-A prevents vascular leakage and CNV possibly via modulating their own expression in mononuclear phagocytes. PGF-related, optimized strategies to target inflammation-mediated angiogenesis may help to increase efficacy and reduce non-responders in the treatment of wet AMD patients.

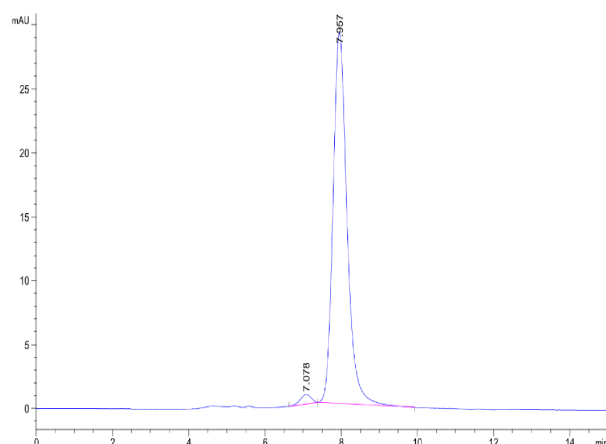
## Assay Data

### Bis-Tris PAGE



Human PGF on Bis-Tris PAGE under reduced condition. The purity is greater than 95%.

### SEC-HPLC



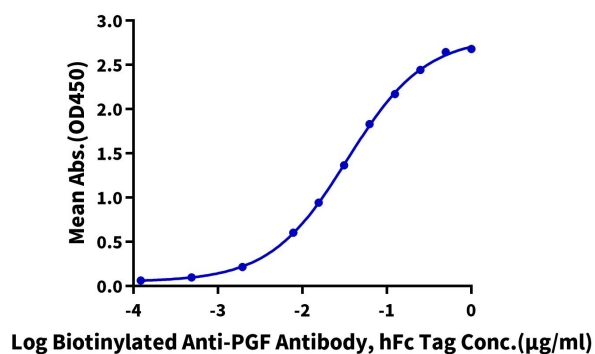
The purity of Human PGF is greater than 95% as determined by SEC-HPLC.

Assay Data

ELISA Data

**Human PGF, hFc Tag ELISA**

0.2µg Human PGF, hFc Tag Per Well

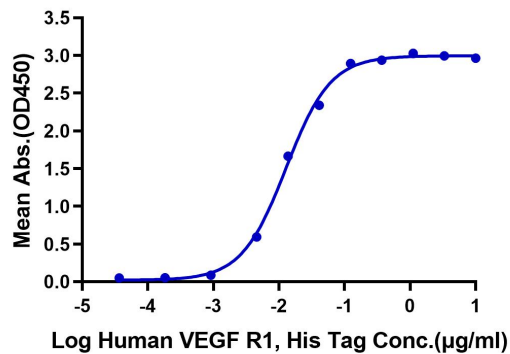


Immobilized Human PGF, hFc Tag at 2µg/ml (100µl/Well) on the plate. Dose response curve for Biotinylated Anti-PGF Antibody, hFc Tag with the EC50 of 34.1ng/ml determined by ELISA (QC Test).

ELISA Data

**Human PGF, hFc Tag ELISA**

0.05µg Human PGF, hFc Tag Per Well



Immobilized Human PGF, hFc Tag at 0.5µg/ml (100µl/Well) on the plate. Dose response curve for Human VEGF R1, His Tag with the EC50 of 12.8ng/ml determined by ELISA.